

Plates from Ludvigson, G.A., Witzke, B.J., Joeckel, R.M., Ravn, R.L., Phillips, P.L., González, L.A., and Brenner, R.L., 2010, New Insights on the Sequence Stratigraphic Architecture of the Dakota Formation in Kansas-Nebraska-Iowa from a Decade of Sponsored Research Activity; *in*, Current Research in Earth Sciences: Kansas Geological Survey, Bulletin 258, part 2.

Available online at
<http://www.kgs.ku.edu/Current/2010/Ludvigson/index.html>

PLATE 1—All micrographs are at x625 magnification.

1. *Lycopodiacidites arcuatus* Hedlund 1966; Cenomanian, Iowa.
2. *Microfoveolatosporis pseudoreticulatus* (Hedlund) Singh 1983; late Albian, Nebraska.
3. *Microreticulatisporites sacalii* (Deák and Combaz) Ravn 1986; Cenomanian, Iowa.
4. *Scopusporis excavatus* (Brenner) Wingate 1980; late Albian, Nebraska.
5. *Plicatella jansonii* (Pocock) Dörhöfer 1977; late Albian, Nebraska.
6. *Staplinisporites caminus* (Balme) Pocock 1962; late Albian, Nebraska.
7. *Plicatella unica* (Markova) Dörhöfer 1977; late Albian, Nebraska.
8. *Neoraistrickia robusta* Brenner 1963; late Albian, Nebraska.
9. *Equisetosporites concinnus* Singh 1964; late Albian, Kansas.
10. *Granulatisporites michinus* (Srivastava) Ravn and Witzke 1995; late Albian, Kansas.
11. *Plicatella witzkei* Ravn 1995; late Albian, Nebraska.
12. *Plicatella cristata* (Markova) Davies 1985; Cenomanian, Iowa.
13. *Camarozonosporites wrennii* Ravn 1995; late Albian, Kansas.
14. *Impardecispora excavata* Ravn 1995; late Albian, Nebraska.
15. *Pilosisorites trichopapillosus* (Thiergart) Delcourt and Sprumont 1955; late Albian, Nebraska.

Plate 1

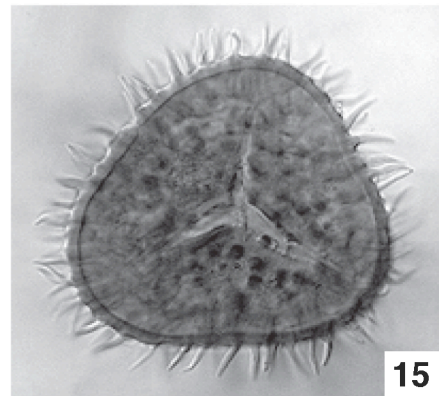
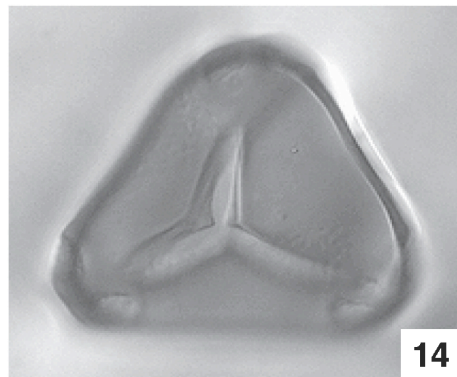
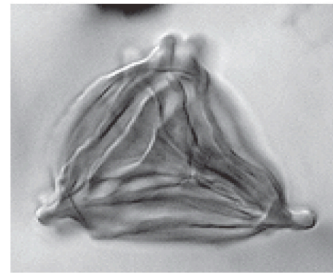
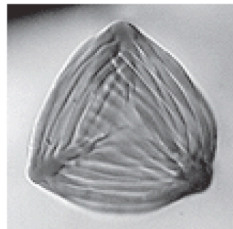
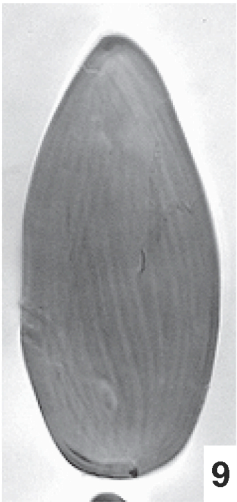
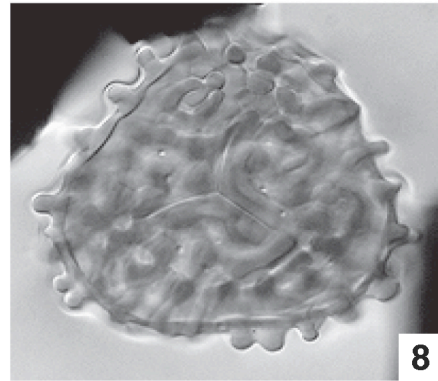
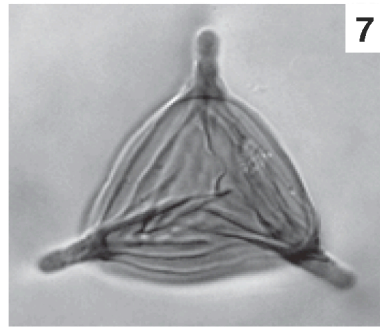
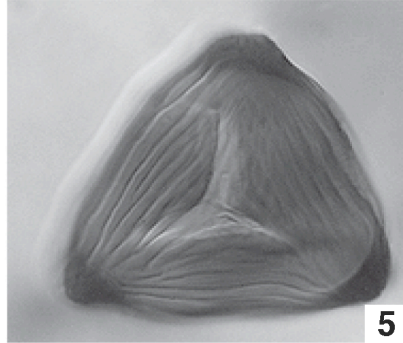
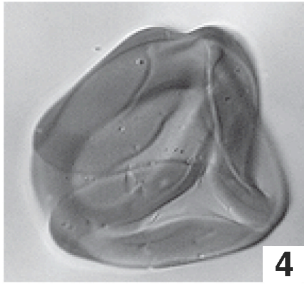
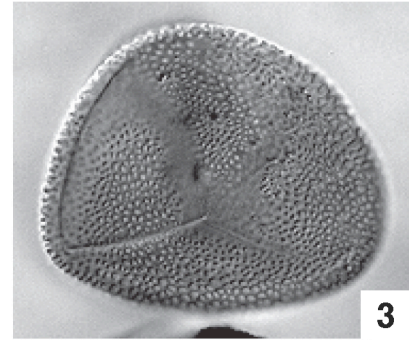
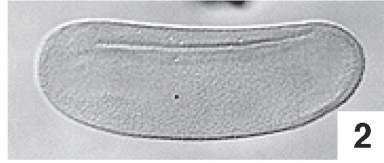
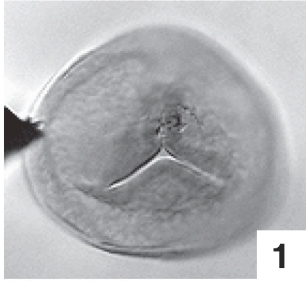


PLATE 2—All micrographs are at x625 magnification.

1. *Tigrisporites verrucatus* Singh 1983; late Albian, Kansas.
2. *Callialasporites dampieri* (Balme) Dev emend. Norris 1969; late Albian, Nebraska.
3. *Quadricolpites reticulatus* Wingate 1983; late Albian, Nebraska.
4. *Quadricolpites reticulatus* Wingate 1983; late Albian, Kansas.
5. *Taurocusporites segmentatus* Stover 1962; late Albian, Nebraska.
6. *Nicholsipollis mimas* Ravn 1995; late Albian, Nebraska.
7. *Schizaeosporites eocenicus* (Selling) Potonié 1956, *sensu* Singh 1964; late Albian, Nebraska.
8. *Cicatricosisporites crassiterminatus* Hedlund 1966; Cenomanian, Iowa.
9. *Jiaohepollis* sp.; late Albian, Nebraska.
10. *Stellatopollis barghoornii* Singh 1983; late Albian, Nebraska.
11. *Densoisporites velatus* Weyland and Krieger 1953; late Albian, Nebraska.
12. *Foveogleicheniidites confossus* (Hedlund) Burger, in Norvick and Burger, 1976; Cenomanian, South Dakota.
13. *Ischyosporites disjunctus* Singh 1971; late Albian, Kansas.
14. *Cicatricosisporites patapscoensis* Brenner 1963; late Albian, Nebraska.
15. *Impardecispora apiverrucata* (Couper) Venkatachala, Kar, and Raza 1969; late Albian, Kansas.
16. *Balmeiopsis limbatus* (Balme) Archangelsky 1977; late Albian, Kansas.

Plate 2

