

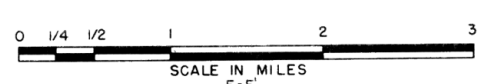
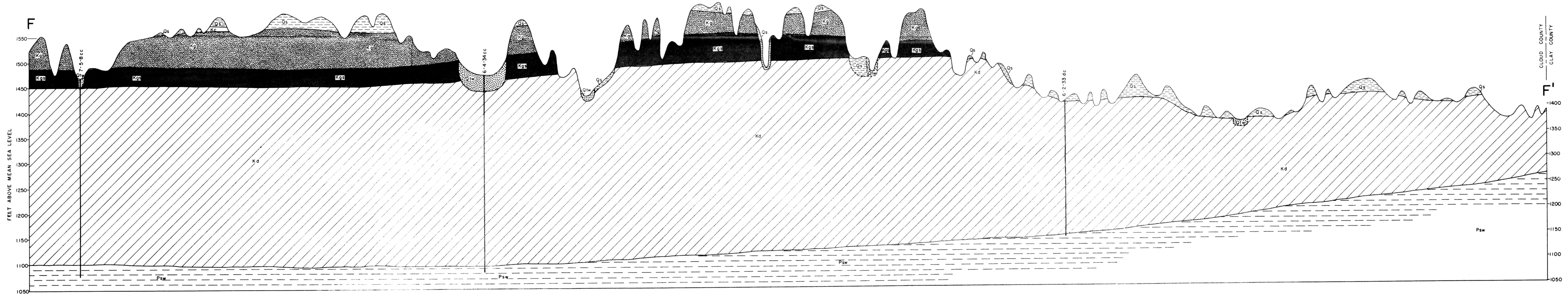
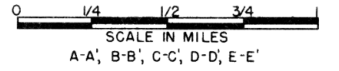
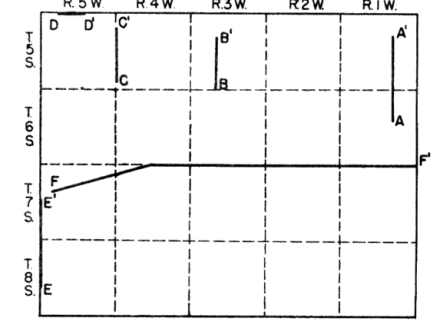
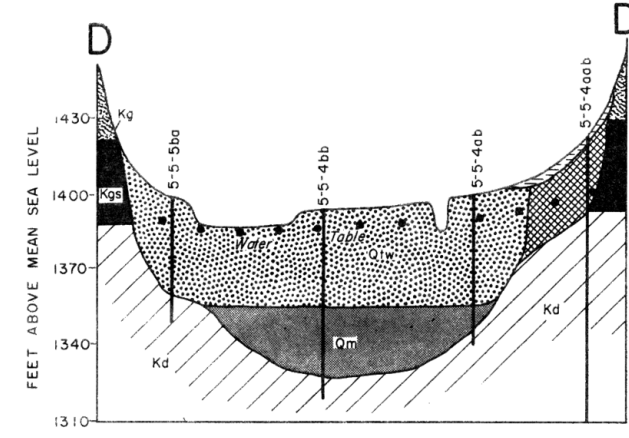
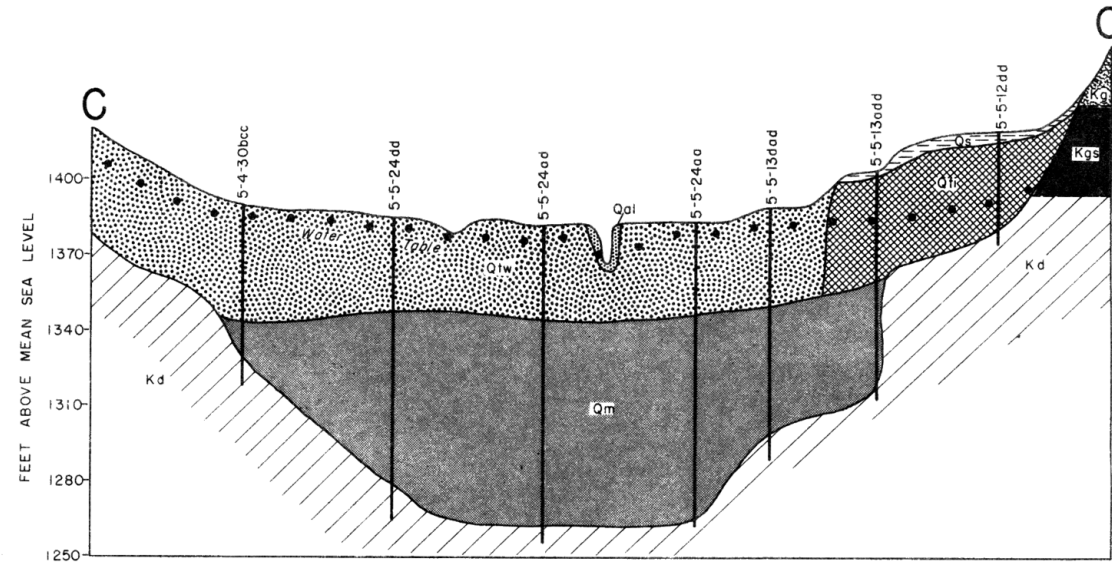
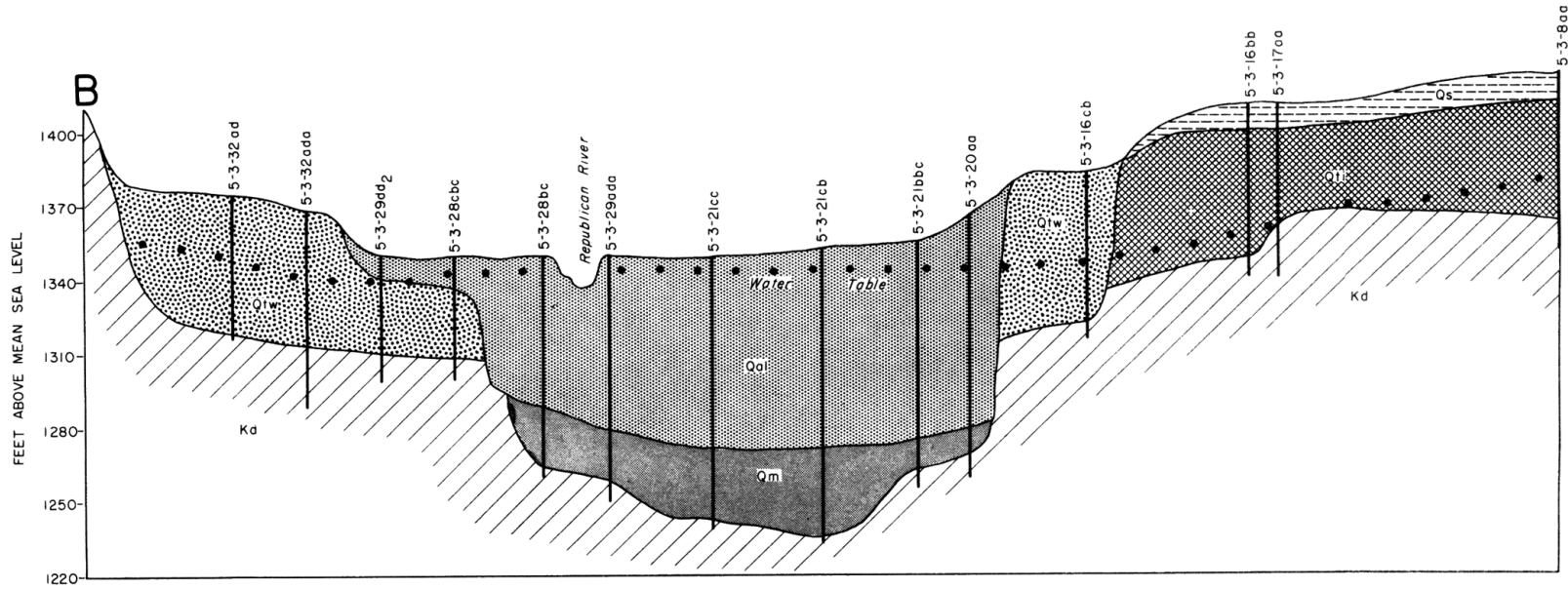
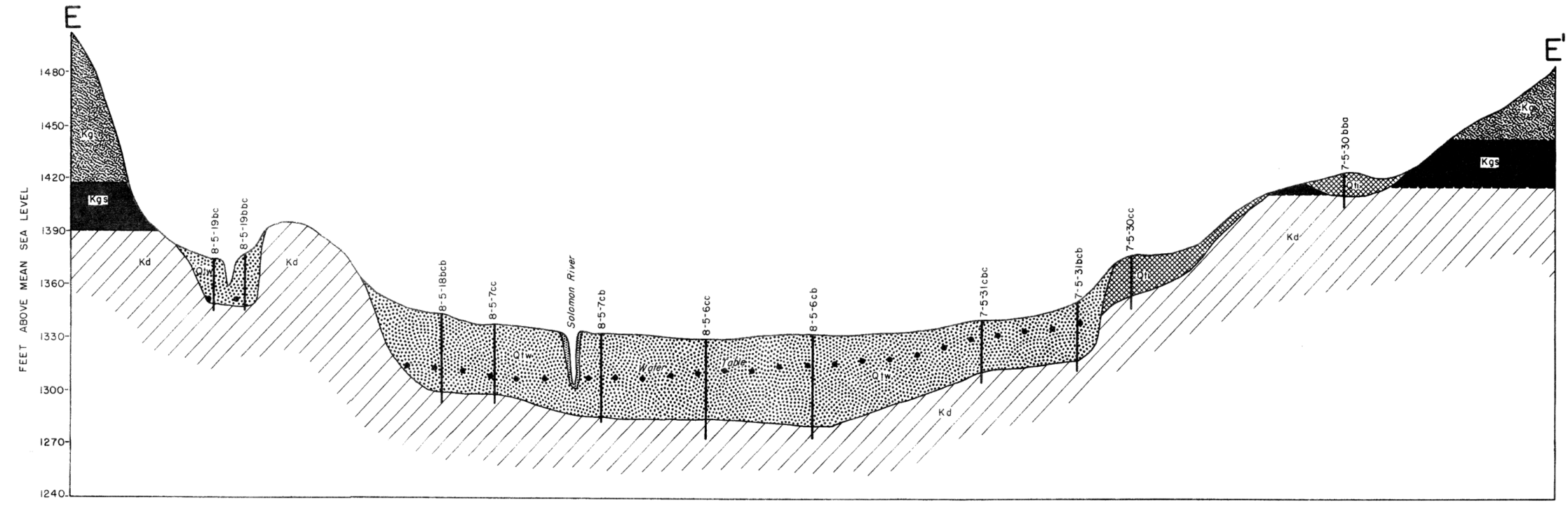
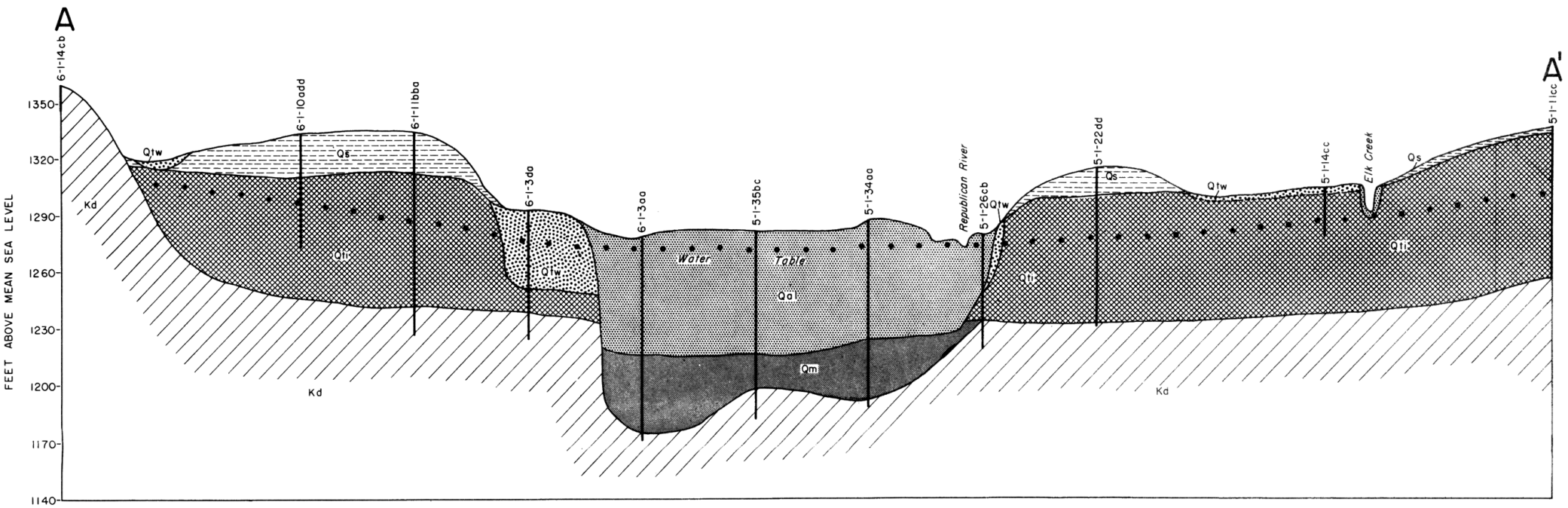
GEOLOGIC SECTIONS IN CLOUD COUNTY, KANSAS

State Geological Survey
of Kansas

by Charles K. Bayne and Kenneth L. Walters

1954

Bulletin 139
Plate 3



- EXPLANATION**
- Alluvium
 - Wisconsin terrace deposits
 - Eolian deposits
 - Illinoian terrace deposits
 - Kansan deposits
 - KANSAN MEADE GROUP
 - Coriite Shale
 - Greenhorn Limestone
 - Graneros Shale
 - Dakota Formation
 - Wellington Shale
- WISCONSINAN AND ILLINOIAN WISCONSINAN RECENT**
- QUATERNARY**
- PLEISTOCENE**
- GULFIAN**
- CRETACEOUS**
- LEONARDIAN**
- PERMIAN**