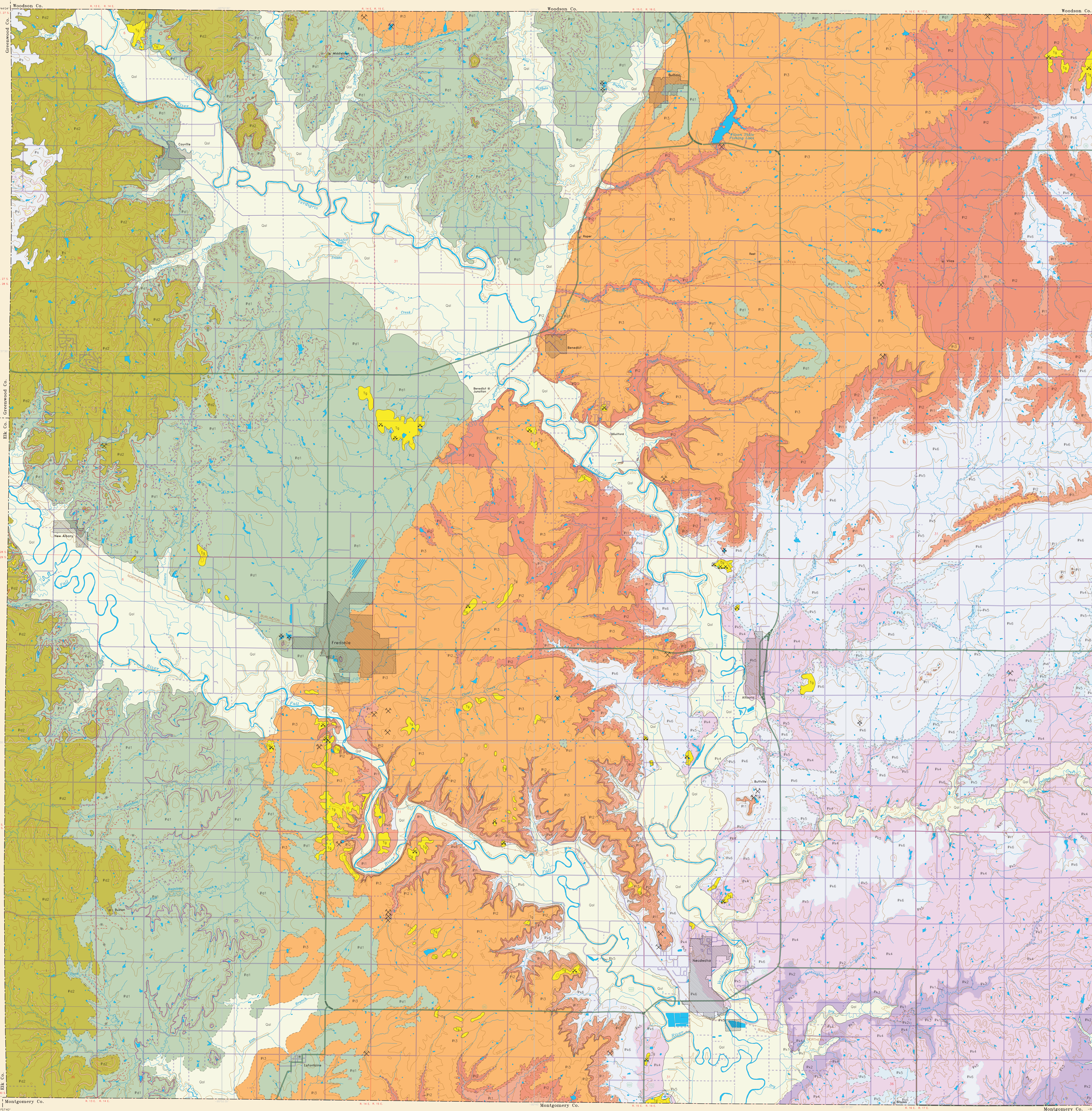
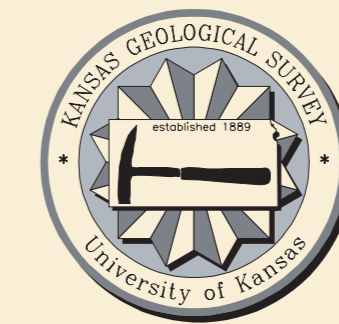


# GEOLOGIC MAP OF WILSON COUNTY, KANSAS

## 2000

Geology mapped in 1950-1955 by  
Holly C. Wagner



Composite Stratigraphic Section	Member	Formation	Group	Series	System	Vertical Scale (in feet)		
Qal		Alluvium and gravel deposits of Recent and Wisconsin Stages	PLEISTOCENE	QUATERNARY	TERTIARY QUATERNARY	0		
Qg		Chert gravel deposits of Pliocene age (?)						
Pt		Plattsmouth Ls Hebner Sh Leavenworth Ls						
P5		Snyderville Sh	SHAWNEE			-100		
		Terapia Ls						
		Amazonia Ls						
Pg2		Ireland Ss	DOUGLASS			-200		
		Lawrence Sh						
		Robbins Sh						
W		Haskell Ls Vinland Sh Westphalia Ls	VIRGILIAN			-300		
T		Tonganoxie Ss						
Pd1		Stranger Fm						
		Weston Sh	PENNSYLVANIAN			-400		
		South Bend Ls Rock Lake Sh Stoner Ls						
Pf3		Eudora Sh						
		Clinton Ls	LANING			-500		
		Viola Sh						
Pf2		Spring Hill Ls						
		Plattsburg Ls	MISSOURIAN			-600		
Pf1		Hickory Creek Sh Merron Ls						
Pk6		Bonner Springs Sh						
		Lone Sh	KANSAS CITY			-700		
Pk5		Raytown Ls Muncie Creek Sh Pogoda Ls						
Pk4		Cottage Grove Ss						
		Chanute Sh				-800		
Pk3		Dewey Ls Nelle By						
Pk2		Drum Ls						
Pk1		Cherryvale Sh				-900		
		Winters Ls Dennis Ls				-1000		

**Computer compilation and cartography by:**  
Jorgina A. Ross  
Bryce Kohl  
Joel Robert  
Jeffrey Severin  
Kim S. Yapp  
Elizabeth C. Crouse

**Geologic unit boundaries:**  
1 - Observed geologic contact  
2 - Inferred geologic contact  
3 - Concealed geologic contact  
\* Does not appear on this map

**Resource development:**  
1 - Quarry  
2 - Gravel pit  
3 - Sand pit  
4 - Oil Well\*  
5 - Gas Well\*  
6 - Water Well\*  
\* Does not appear on this map

**Hydrology and topography:**  
1 - Intermittent stream  
2 - Perennial stream  
3 - Areal hydrology  
4 - Elevation contours (10-meter interval)  
5 - Elevation contours (50-meter interval)

**Transportation:**  
1 - Interstate highway  
2 - Federal highway  
3 - State highway  
4 - Medium-duty secondary road  
5 - Light-duty secondary road  
6 - Unimproved secondary road  
7 - Railroad

**Boundaries and locations:**  
1 - State line\*  
2 - County line  
3 - Township/Range line  
4 - Section line  
5 - Locality  
6 - Populated area  
\* Does not appear on this map

**Index reference features:**  
1 - 1:24,000 map edge  
2 - Line of cross section  
\* Does not appear on this map

**INDEX TO PUBLIC LAND SURVEY:**  
Range: 13E, 14E, 15E, 16E, 17E  
Township: 27N, 28N, 29N, 30N

**INDEX TO 1:24,000 SCALE MAPS:**  
Range: 1, 2, 3, 4  
Township: 5, 6, 7, 8, 9, 10, 11, 12

**LOCATION DIAGRAM:**  
Shows the location of Wilson County within the state of Kansas.

**EXPLANATION:**  
Sandstone or siltstone  
Caliche shale  
Limestone  
Unconformity  
Shale or claystone  
Black shale  
Shale  
Steep limestone  
Coal or lignite  
Claystone concretion  
Shale

**Location of pits, quarries, and Tertiary chert gravels field checked and modified by D.F. Merron in July 1999.**  
Elevation contours are presented for general reference. They are taken from USGS Digital Line Graph (DLG) files compiled from base maps of a scale of 1:100,000. In some places the contours from the DLGs may be more generalized than the base maps used for compilation of geologic outcrop patterns. Outcrop patterns on the map will typically reflect topographic variation more accurately than the associated contour lines. Repeated fluctuation of an outcrop line across a contour line should be interpreted as an indication that the mapped rock unit is maintaining a relatively constant elevation along a generalized contour.

**Lambert Conformal Conic Projection with standard parallels at 39° and 43°**  
SCALE 1:50,000

**CONVERSION TABLE:**

feet	meters	kilometers	miles
1	0.3048	0.0003048	0.00062137
3,280.8	1,000	0.62137	1.0
5,280	1,609.4	1.0046	1.6093

To convert feet to meters multiply by 0.3048  
To convert meters to feet multiply by 3.2808  
To convert kilometers to miles multiply by 0.6214  
To convert miles to kilometers multiply by 1.6094

**Suggested reference to this map:**  
Wagner, H. C., 2000, Geologic Map, Wilson County, Kansas: Kansas Geological Survey, Map M-51, scale 1:50,000.  
ISBN 1-58801-880-3