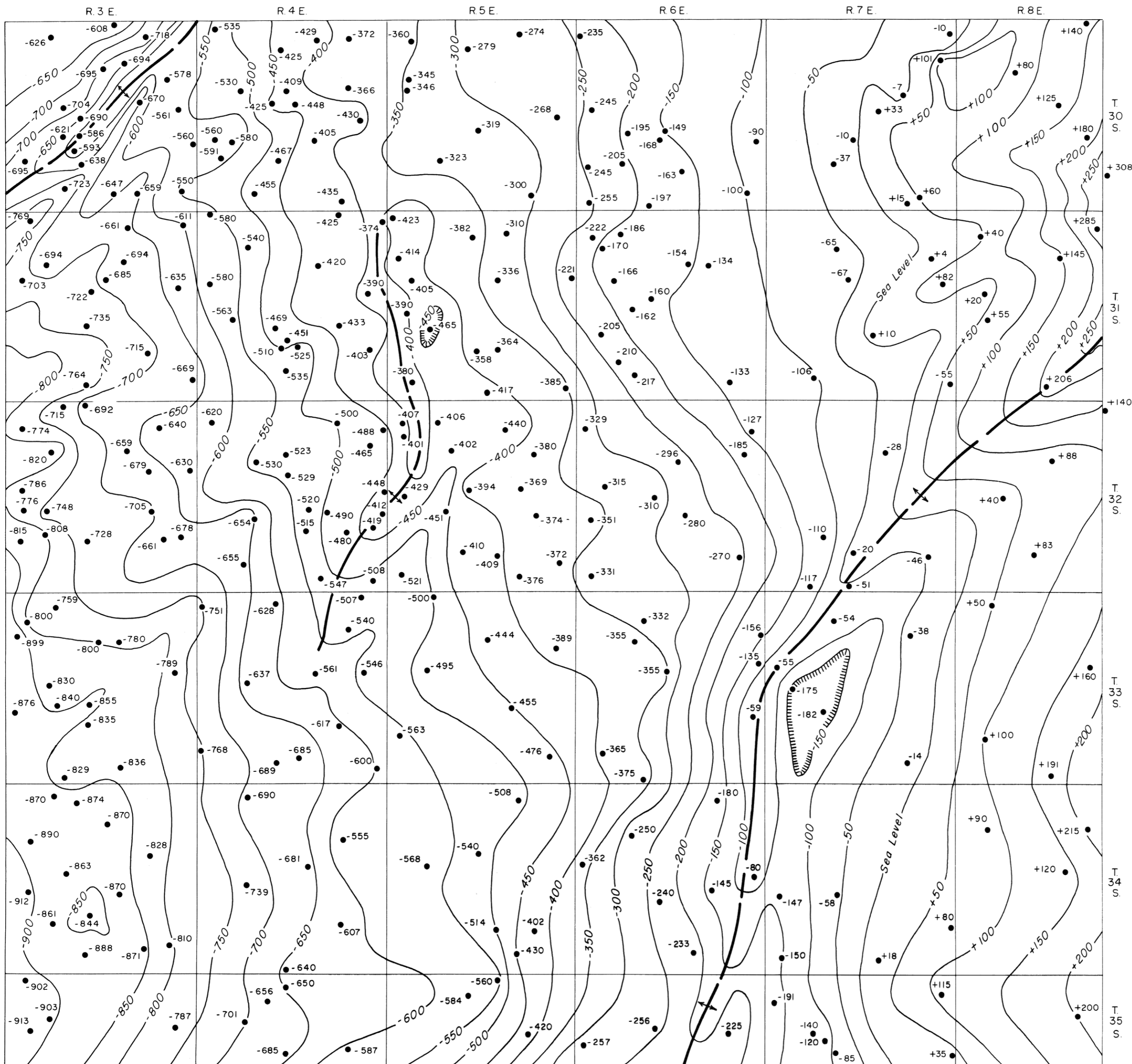


# STRUCTURE CONTOURS OF TOP OF DOUGLAS GROUP IN COWLEY COUNTY

State Geological Survey  
of Kansas

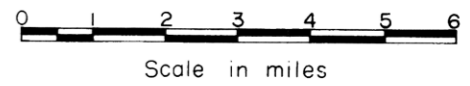
by Charles K. Bayne  
1958

Bulletin 158  
Plate 5



## EXPLANATION

- Well penetrating Douglas rocks
- Contour interval 50 feet
- Datum mean sea level
- +90, -40 Altitude above or below sea level



— + — Axis of anticline