

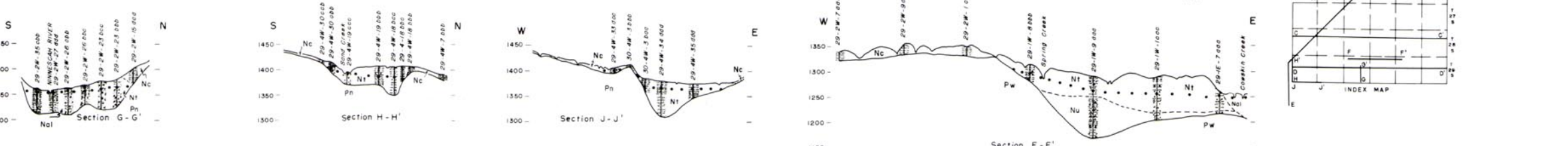
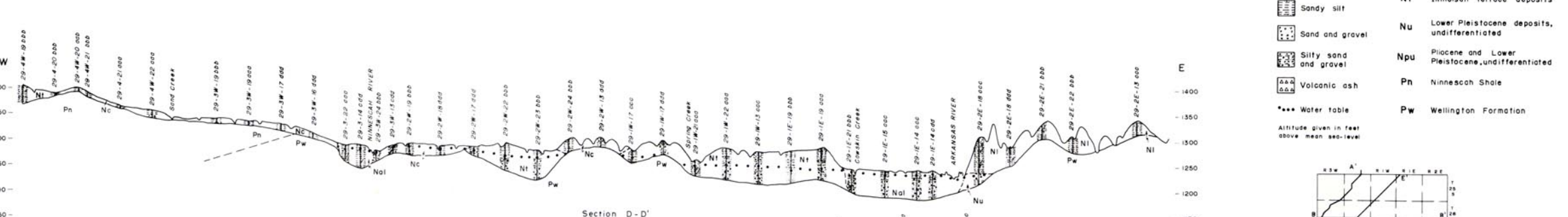
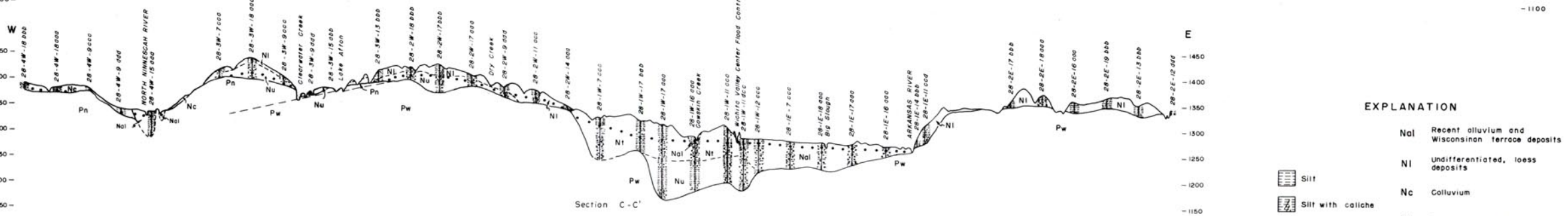
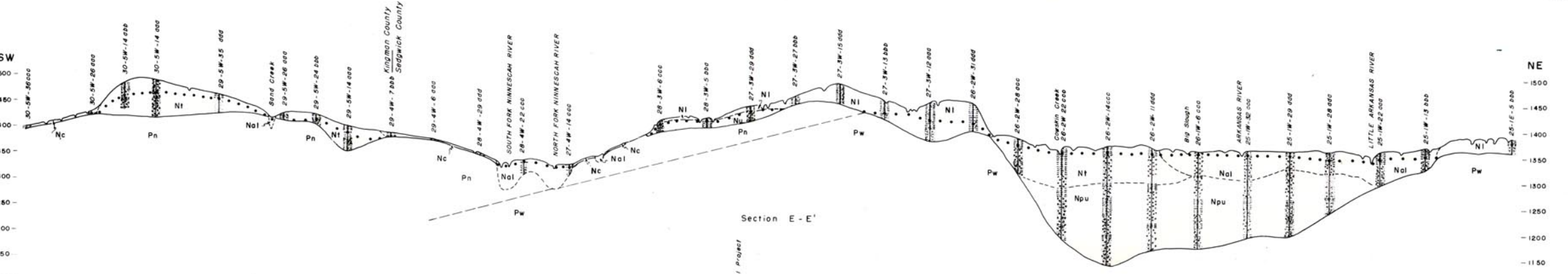
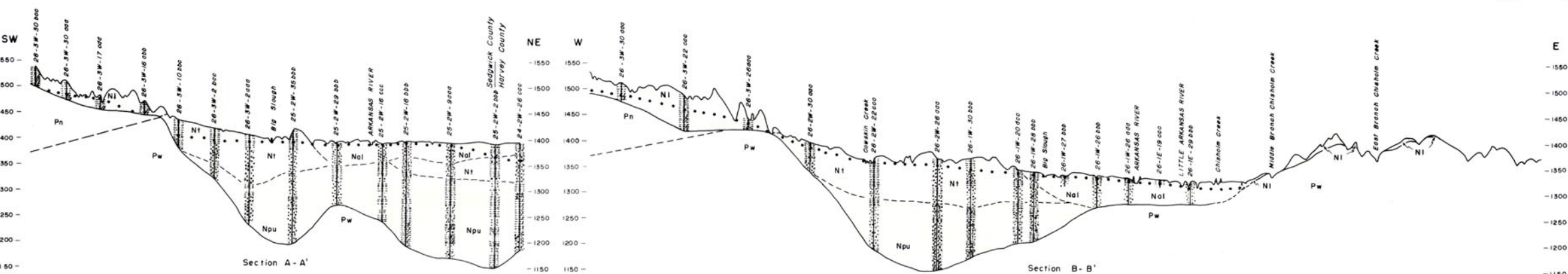
GEOLOGIC CROSS SECTIONS OF SEDGWICK COUNTY, KANSAS

1965

by Charles W. Lane and Don E. Miller

Bulletin 176
Plate 2

State Geological Survey
of Kansas



EXPLANATION

[Symbol]	Nal	Recent alluvium and Wisconsinan terrace deposits
[Symbol]	Ni	Undifferentiated, loess deposits
[Symbol]	Nc	Colluvium
[Symbol]	Nt	Illinoian terrace deposits
[Symbol]	Nu	Lower Pleistocene deposits, undifferentiated
[Symbol]	Npu	Pliocene and Lower Pleistocene, undifferentiated
[Symbol]	Pn	Ninnesch Shale
[Symbol]	Pw	Wellington Formation

*** Water table
Altitude given in feet above mean sea level

