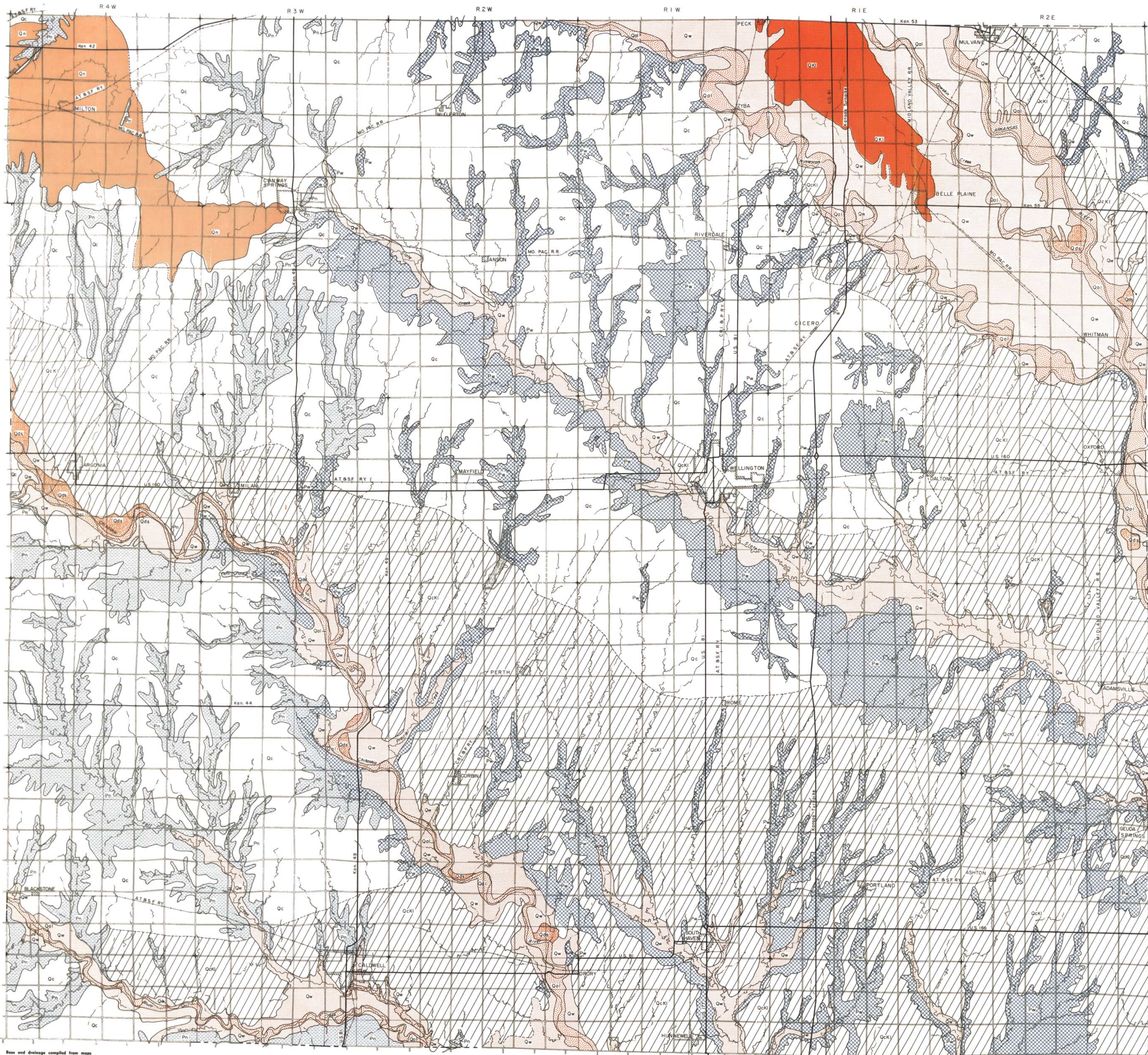


AREAL GEOLOGY OF SUMNER COUNTY, KANSAS

State Geological Survey
of Kansas

by Kenneth L. Walters
1957

Bulletin 151
Plate 1



EXPLANATION

- | | | | | | |
|-------------|----------------------|------|--|-----|----------------------|
| PLEISTOCENE | Recent | Qds | Dune sand | Qal | Alluvium |
| | Wisconsinan | Qw | Terrace deposits | Qki | Terrace deposits |
| | Kansan and Illinoian | Qk | Terrace deposits | Qn | Terrace deposits |
| | Nebraskan | Pn | Ninnesch Shale | P | Wellington Formation |
| PERMIAN | | | | | |
| | Illinoian to Recent | Qc | Colluvium or pediment deposits | | |
| | Kansan to Recent | Qckl | Colluvium or pediment deposits underlain by Kansan or Illinoian terrace deposits | | |
-
- | | |
|---|---|
| <p>— Federal or state highway</p> <p>— Graded road</p> <p>— Railroad</p> <p>— Ungraded road</p> <p>--- County line (no road)</p> <p>--- State line (no road)</p> <p>--- Section line (no road)</p> <p>~ Intermittent stream</p> | <p>0 1 2 3 4 5</p> <p>Scale, in miles</p> |
|---|---|

QUATERNARY

PERMIAN

Base and drainage compiled from maps prepared by the Soil Conservation Service.