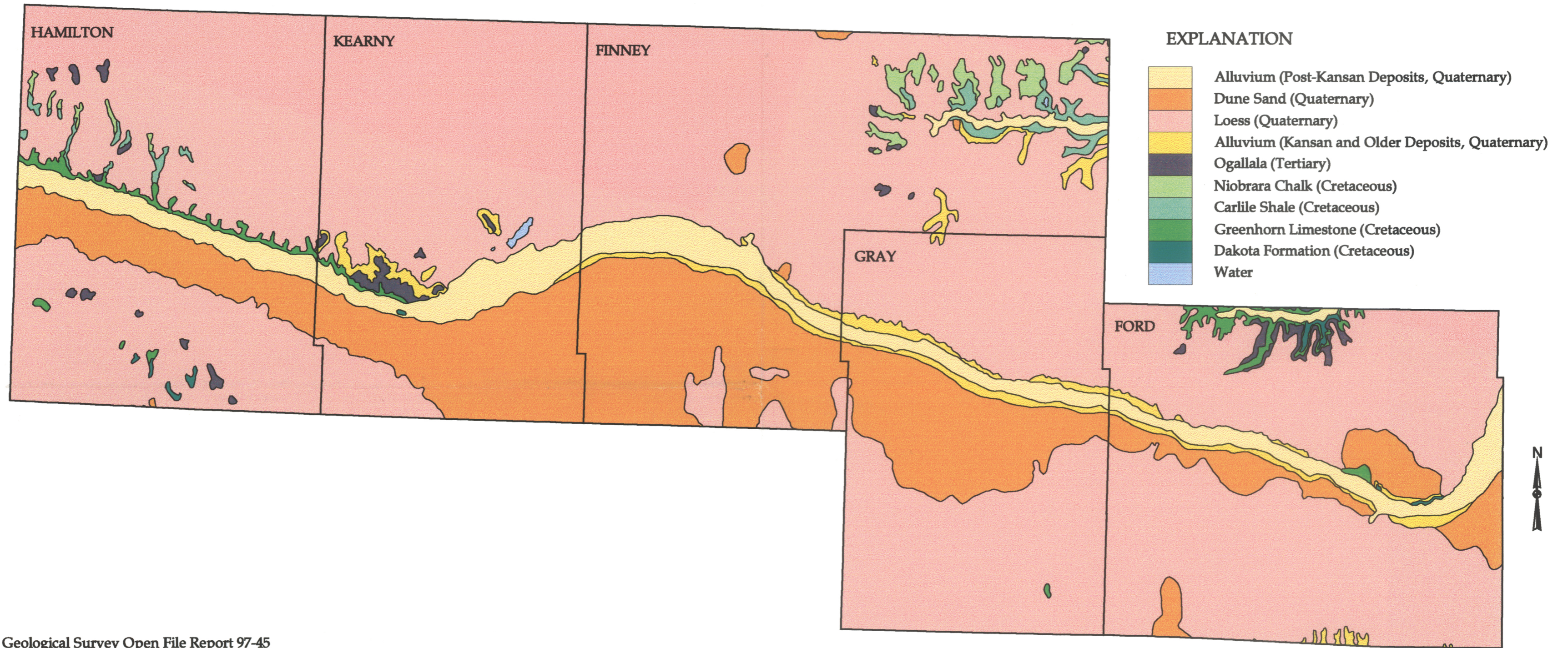


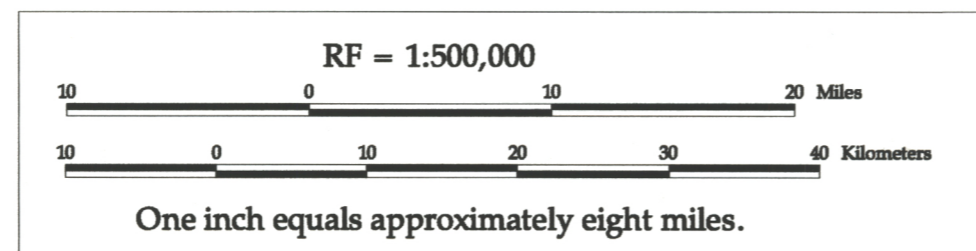
# Surface Geology in the Upper Arkansas River Corridor Study Area



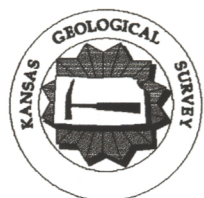
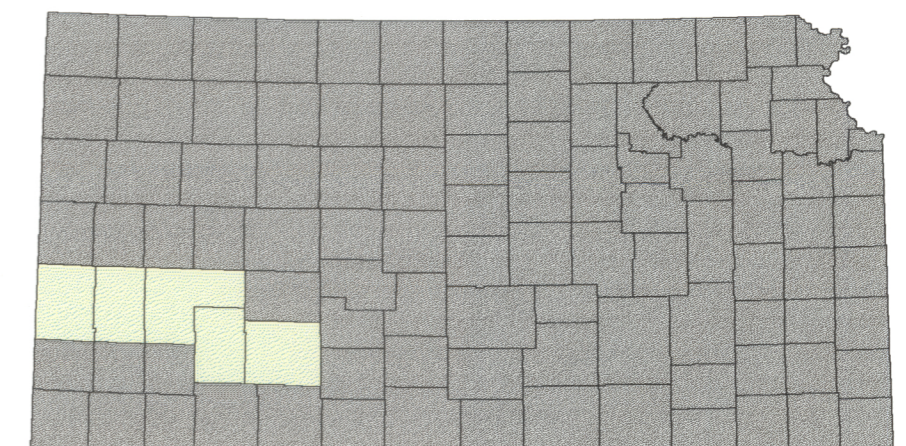
Kansas Geological Survey Open File Report 97-45

Plate C

This map has been prepared at the Kansas Geological Survey under a contract entitled "Upper Arkansas River Corridor Study" funded by the Kansas Water Plan through the Kansas Water Office. It is part of a series of map plates created to assist in the assessment of human and environmental influences on salinity migration into freshwater areas.



Locator Map



The Kansas Geological Survey does not guarantee this map to be free from errors or inaccuracies and disclaims any responsibility or liability for interpretations based on data used in the production of this map or decisions based thereon. This map is intended to make results of research available at the earliest possible date, but is not intended to constitute final or formal publication.

Projection: Lambert Conformal Conic  
 Standard Parallels: 33 and 45 degrees North  
 Central Meridian: 98.15 degrees West  
 Latitude of Origin: 36 degrees North

Compiled by Lee Bissinger and Fritz Kessler at the Kansas Geological Survey in July 1997.

Data Source: Kansas Geological Survey, Automated Cartography, 1992