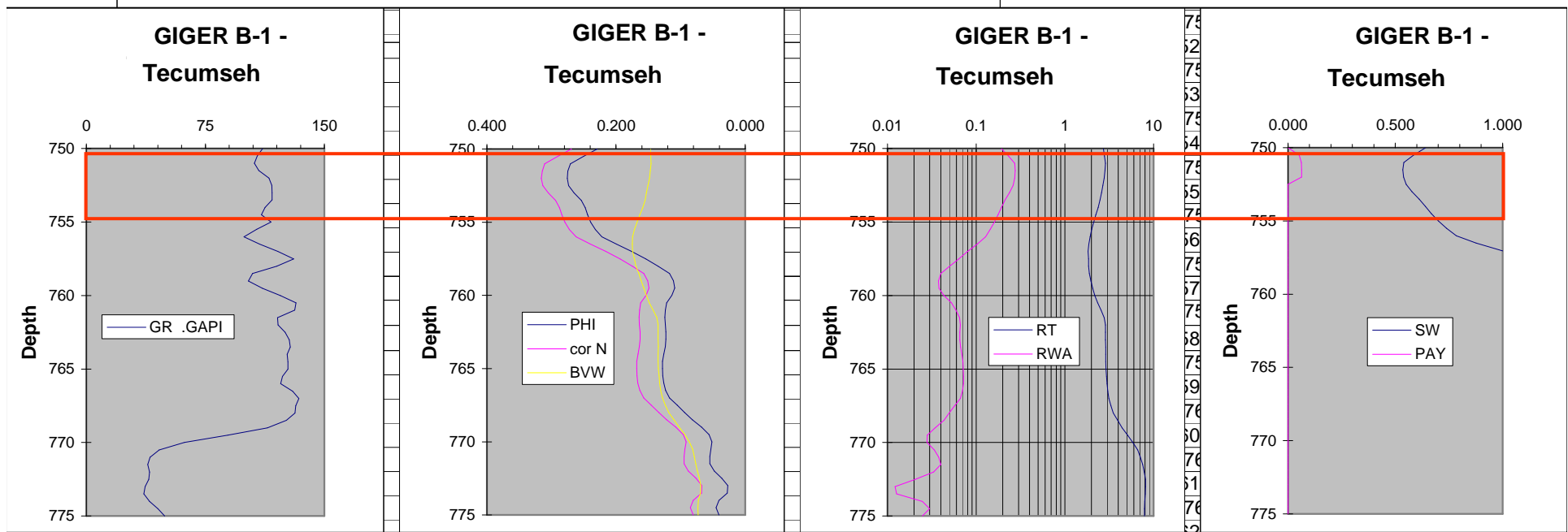


Giger B-1

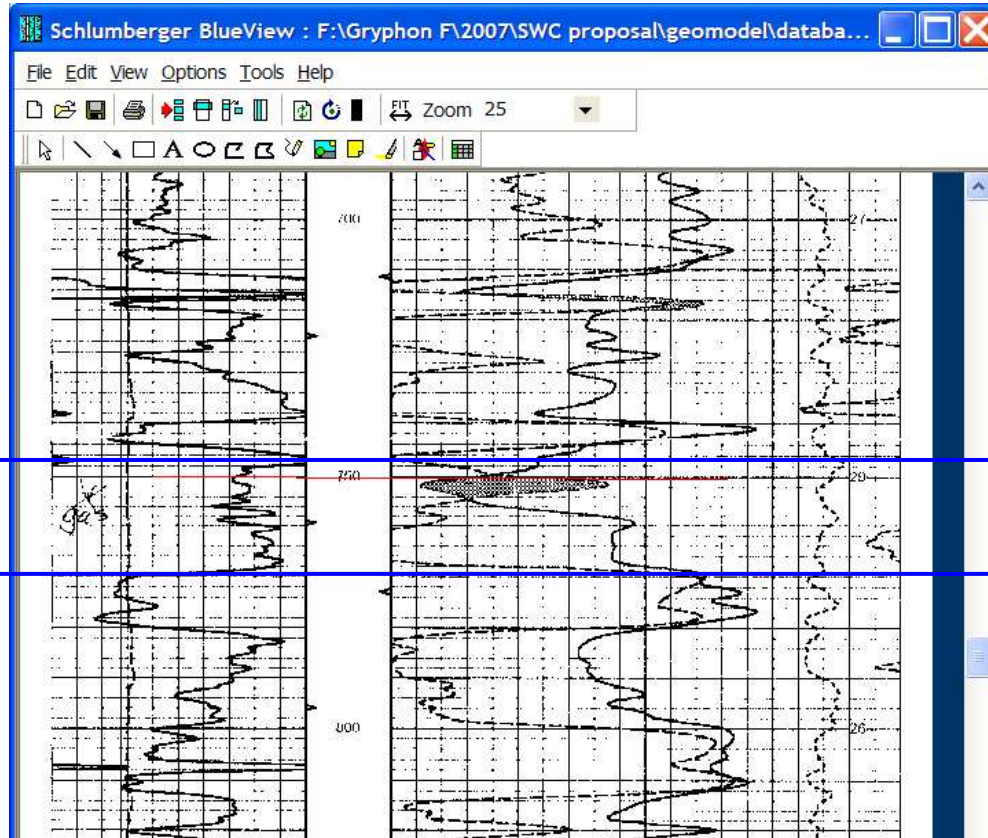
Tecumseh (750-755 ft)

- Gas effect on neutron porosity, separation between density porosity and BVW
- BVW clusters around 0.15, moderately high density porosity (28%), Sw ~ 60% or less
- GR high
- **Possibly gas bearing. No show during drilling.**

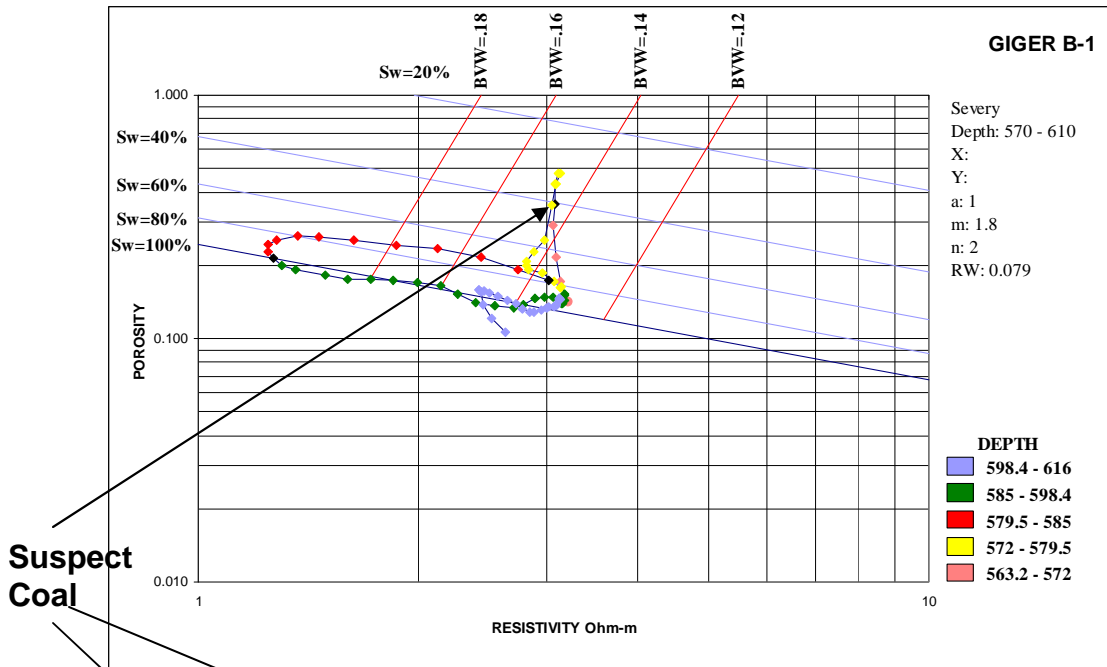


Giger B-1

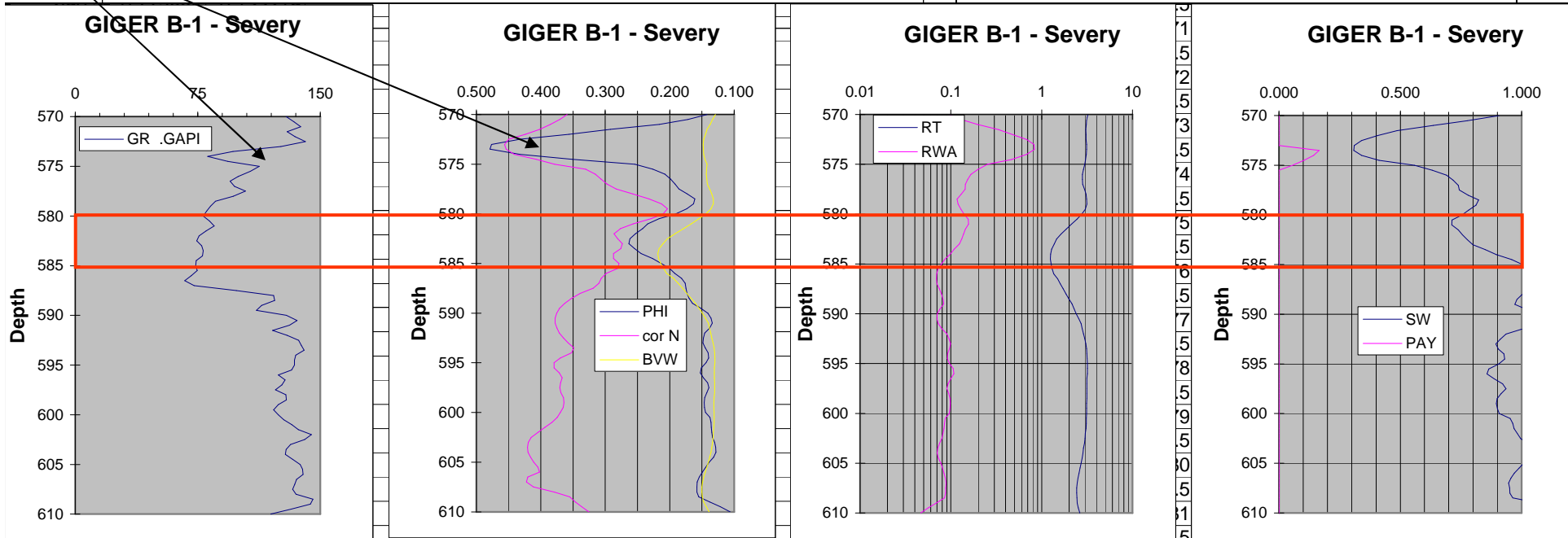
- Samples indicate fine grain porous sandstone in spite of high gamma ray;
- No gas show during drilling.



| | | | |
|--|-----|---|---------------------------|
| | 750 | Limestone: off white, fine grained, dense, no visible porosity, no show | <i>Tecumseh 752 +503</i> |
| | | Sandstone: gray, fine grained, fair sorted, poor cement, good intergranular porosity, no show | |
| | | Shale: gray to green, arenaceous | <i>Lecompton 773 +482</i> |
| | | Limestone: light brown, medium crystalline, no visible porosity, no show, fossiliferous | |



- Giger B-1**
- Severy (580-585 ft)**
- Gas effect on neutron porosity, slight separation between density porosity and BVW
 - Increasing BVW and Sw with depth
 - Moderate porosity, and relatively low GR (< 100 API), Sw + 70%
 - Possible coal bed (2 ft) above sand
 - **Possible gas zone in transition**



Giger B-1, Severy

- Possible coal bed

