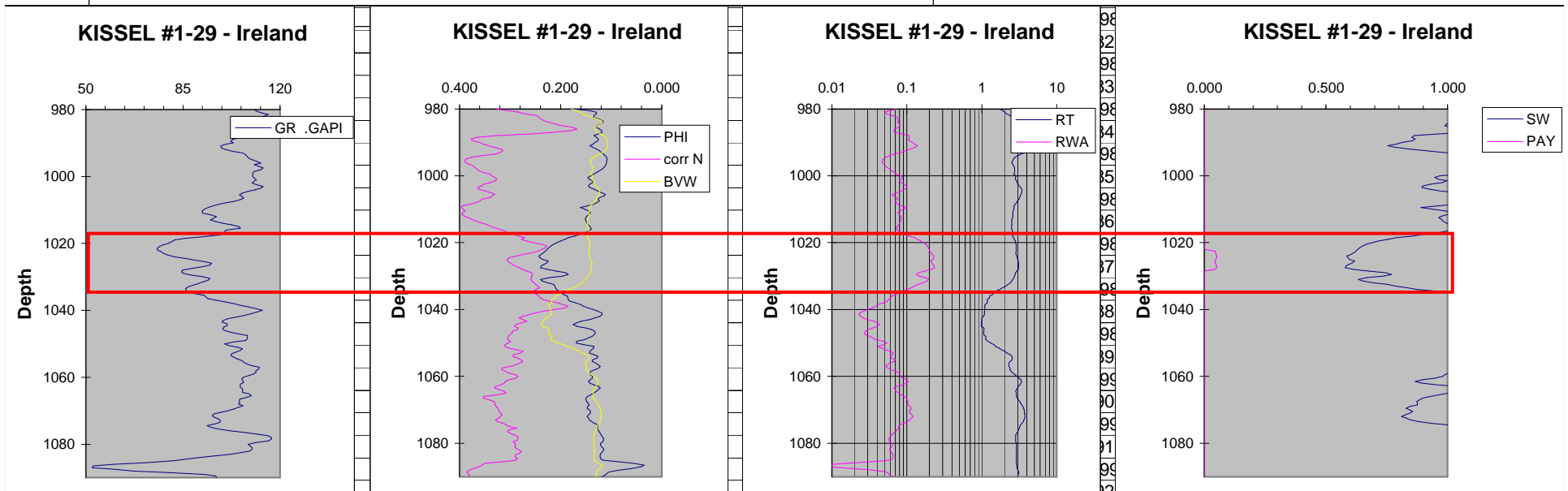
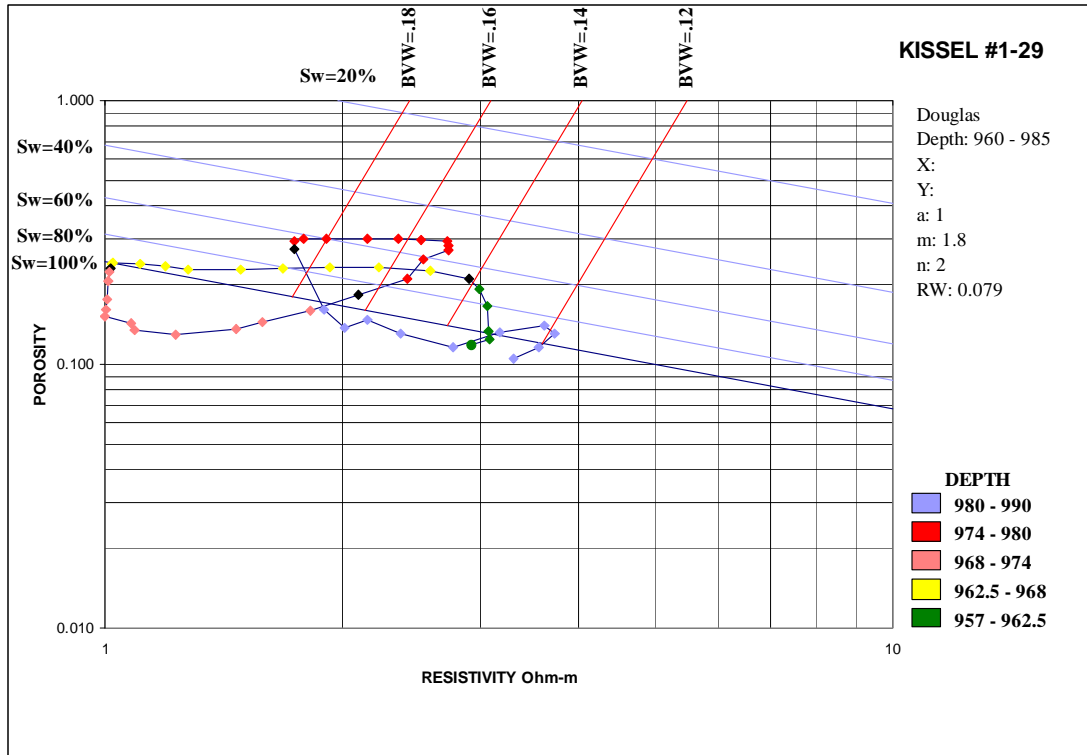


Kissel 1-29

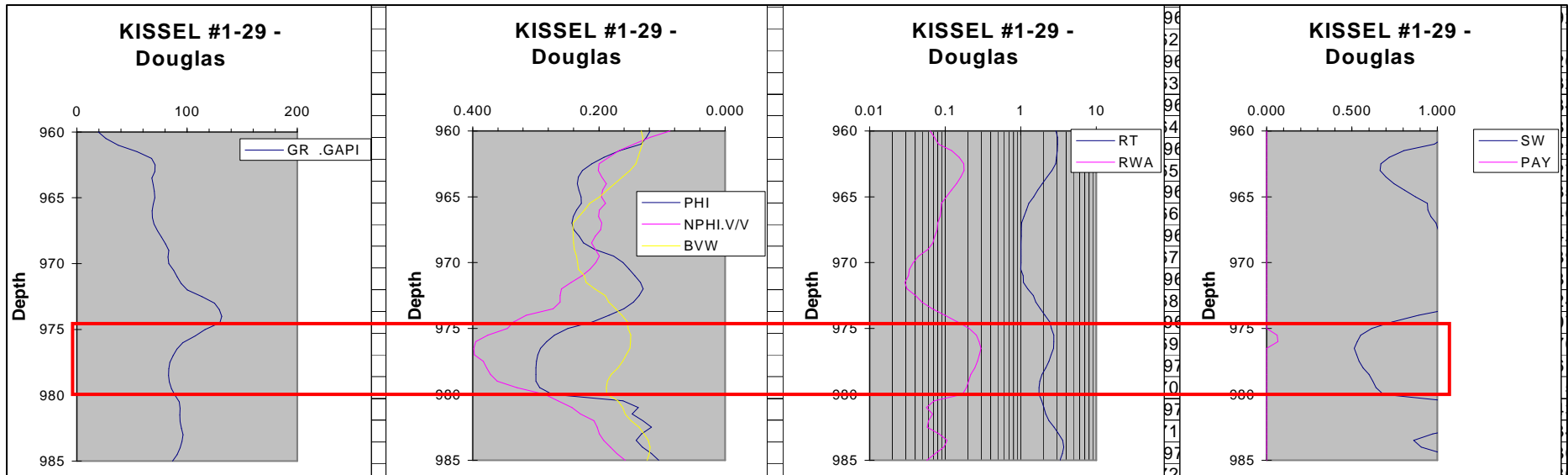
Ireland (1020-1037 ft)

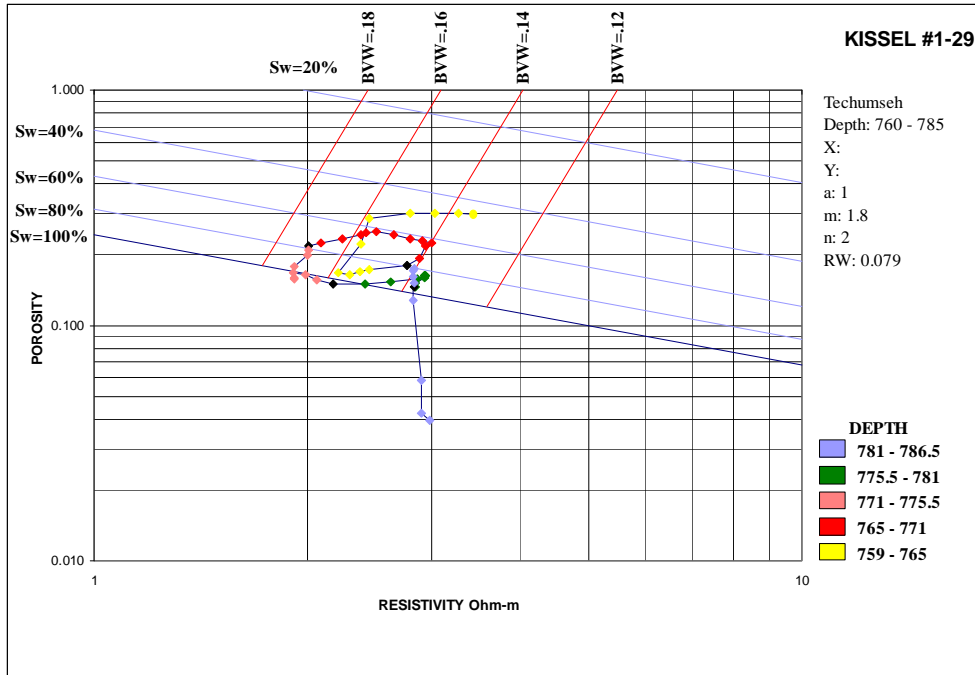
- Gas effect visible on neutron porosity log, separation between density porosity and BVW
- Low GR (< 100 API) and BVW cluster around 0.14
- 60% > Sw > 80%
- **Possibly Gas**





- ### Kissel 1-29
- #### Douglas (974-980 ft)
- No Gas effect
 - Separation between density porosity and BVW
 - Some BVW clustering around 0.15. Sw close to 60%
 - **Some possibility of gas**

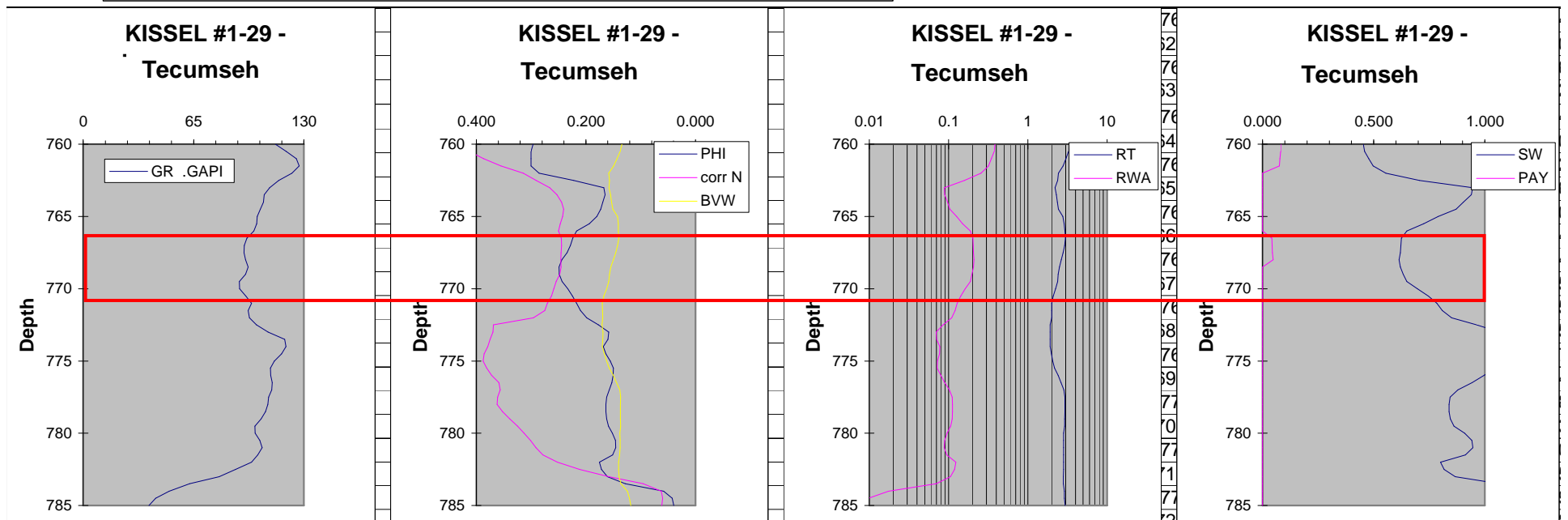




Kissel 1-29

Tecumseh (766-771 ft)

- Gas effect on neutron porosity, separation between density porosity and BVW
- BVW < 0.16 with some clustering around 0.14. Sw close to 60%
- Possible mudcake build up over this interval indicating higher permeability
- **Possibly gas**



Kissel 1-29

- Mudcake buildup 762-772 ft.

