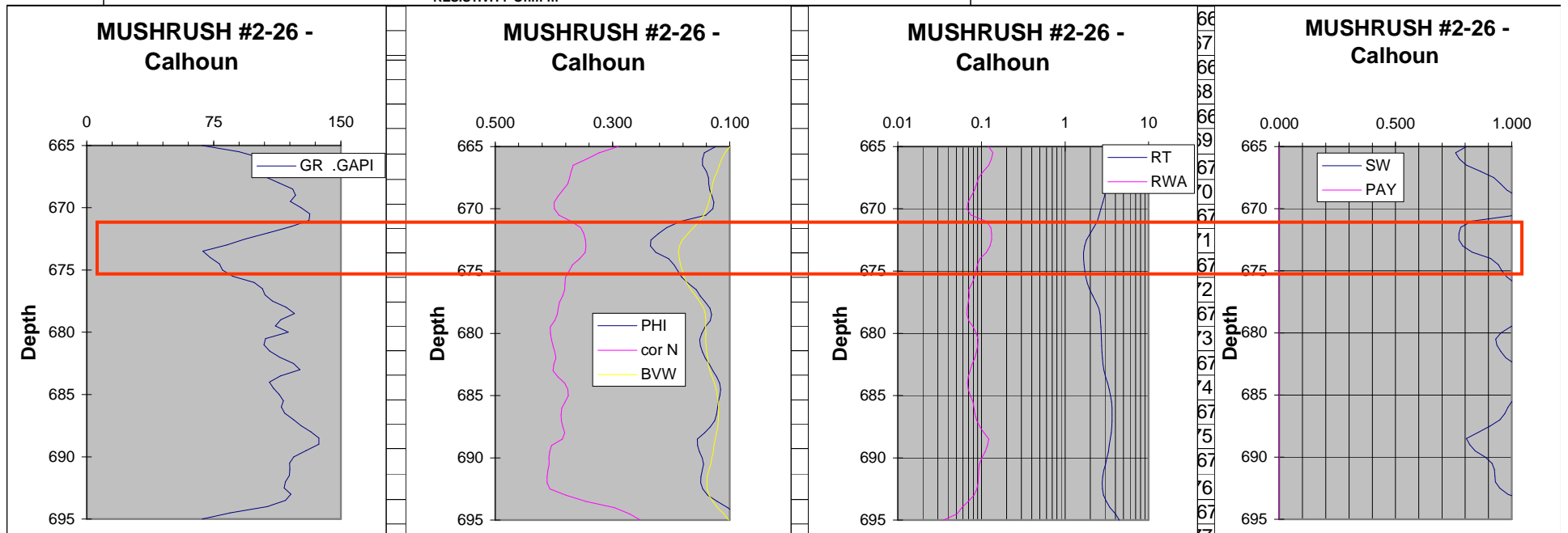
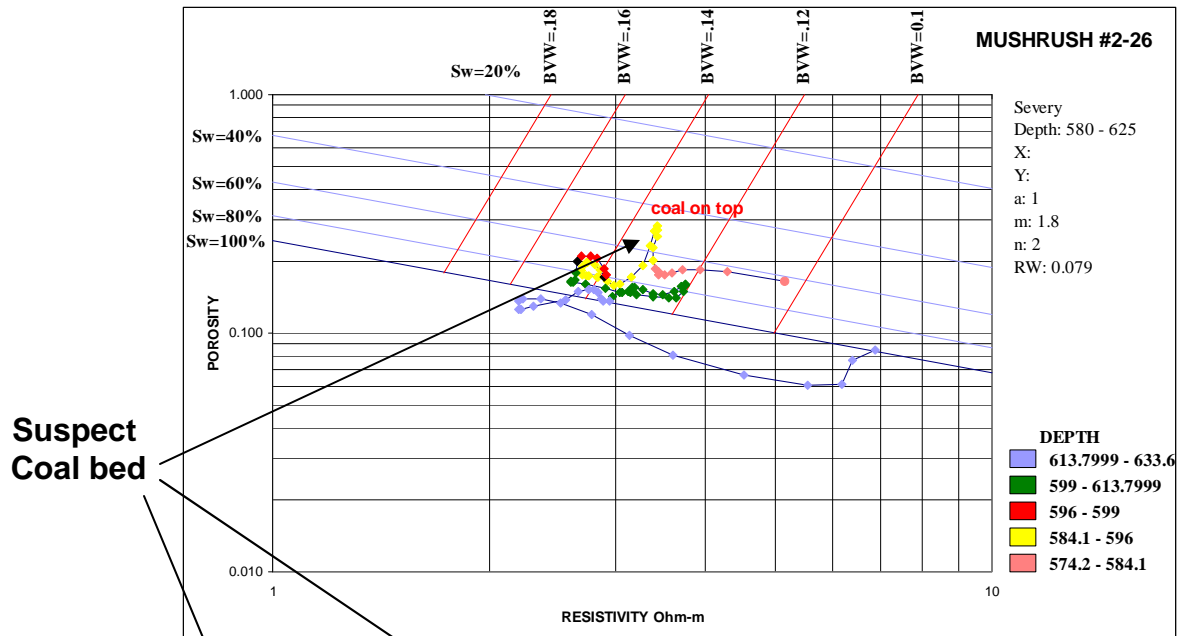


Mushrush 2-26

Calhoun (671-675 ft)

- Appearance of gas effect on neutron log, slight separation between density log and BVW
- Sw +80%, BVW >0.16
- **Poor prospect - gas in transition**





Suspect
Coal bed

Mushrush 2-26

Severy (596-599 ft)

- Thin gas sand, BVW cluster ~014, Sw 70%
- Appearance of a gas effect on the neutron log, separation between density log and BVW
- **Gas in transition**
- Thin coal on top

