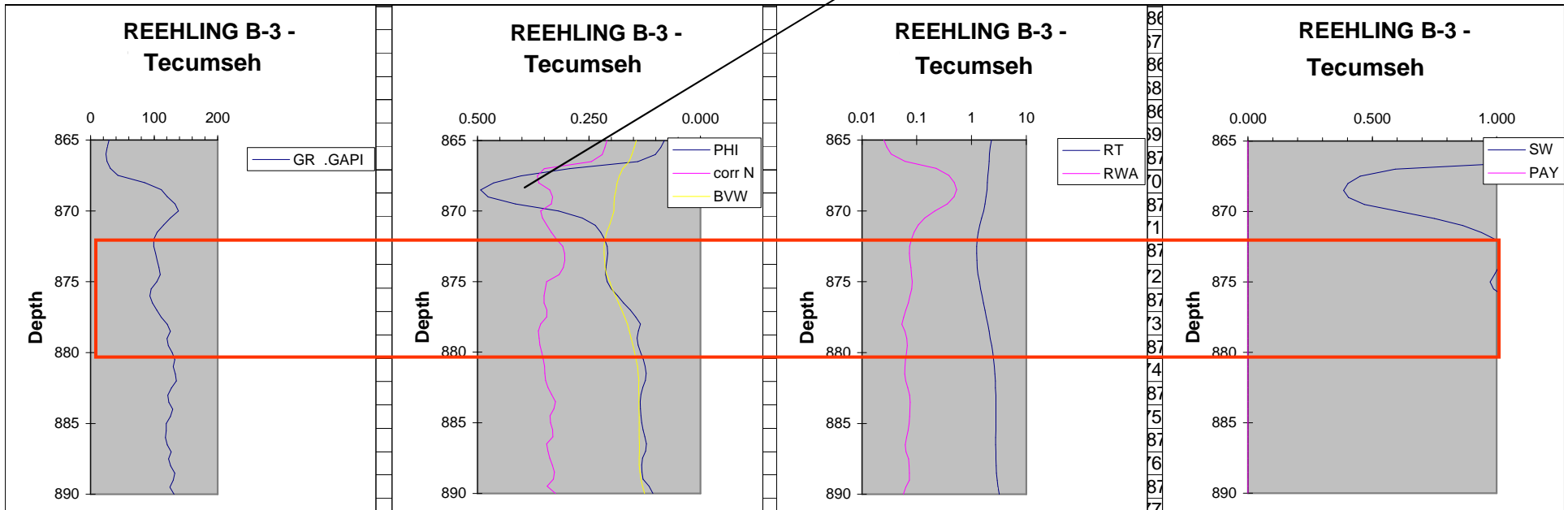


Reehling B-3 Tecumseh (872-880 ft)

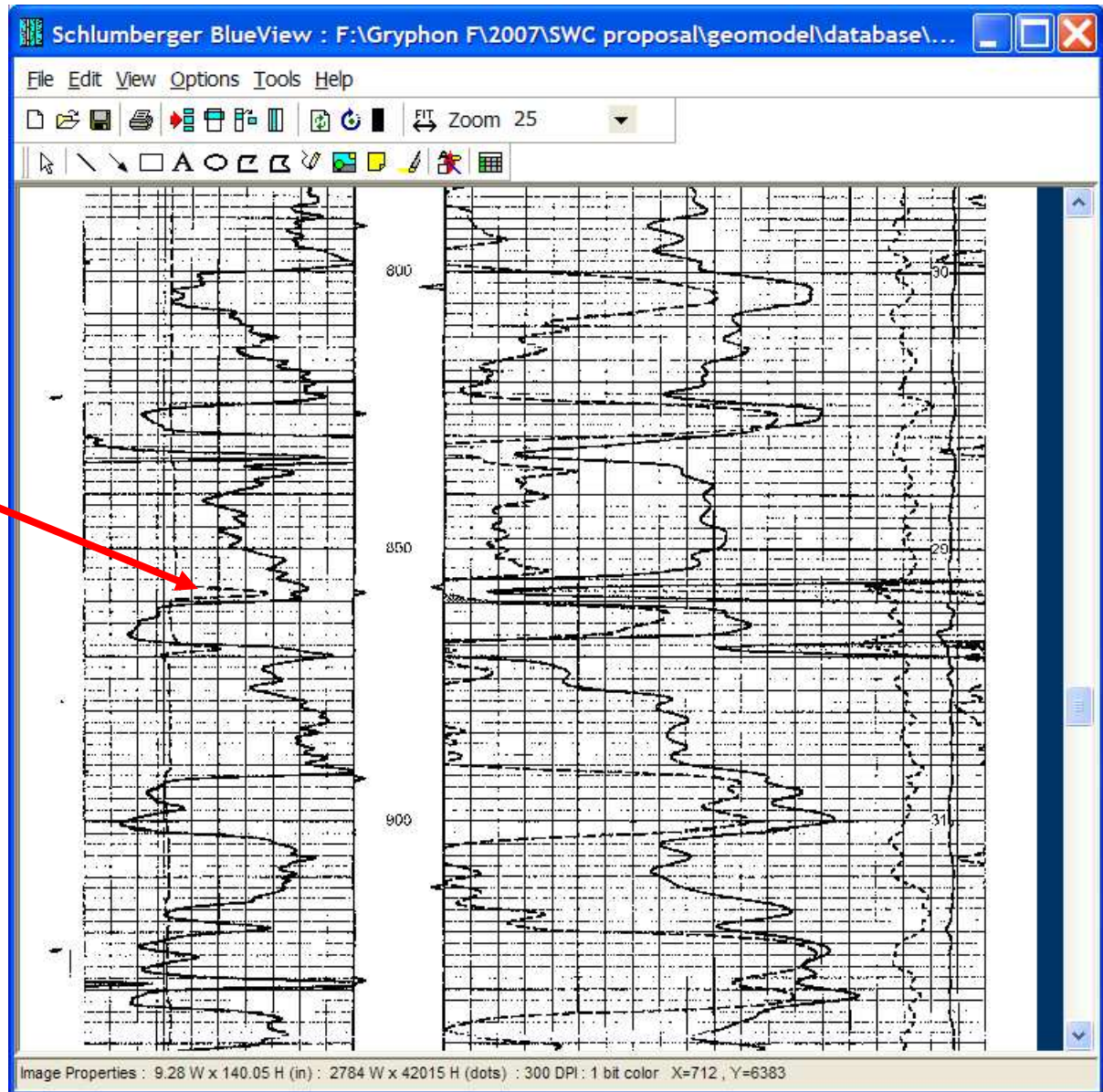
- Washout at shale accounting for high porosity on top of sand
- High GR (~100 API), and overlap of BVW and density porosity
- **Expected to be wet**

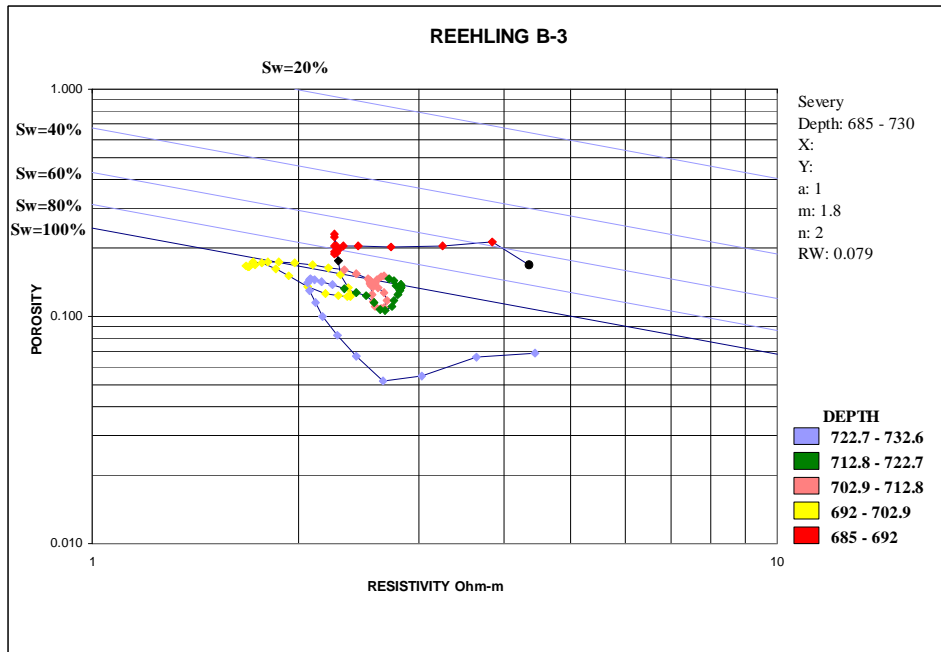
Density log reading high (~50%) at washout across shale see caliper log



Reehling B-3

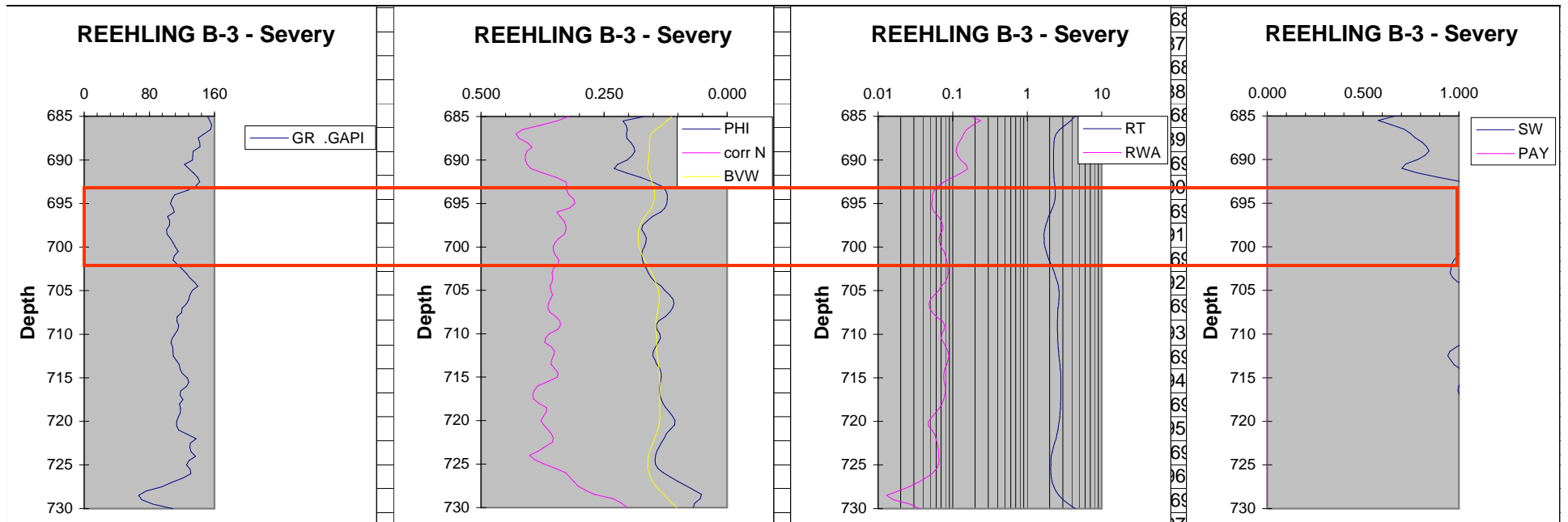
Washout affect
density logs just
above the
Tecumseh sand





Reehling B-3 Severy (692-702 ft)

- Overlying coal (690-692 ft) possibly - high porosity combines with slightly lower GR
- Sand - overlap between BVW and density porosity
- **Expected to be wet**



Reehling B-3

- Coal overlying Severy sand

