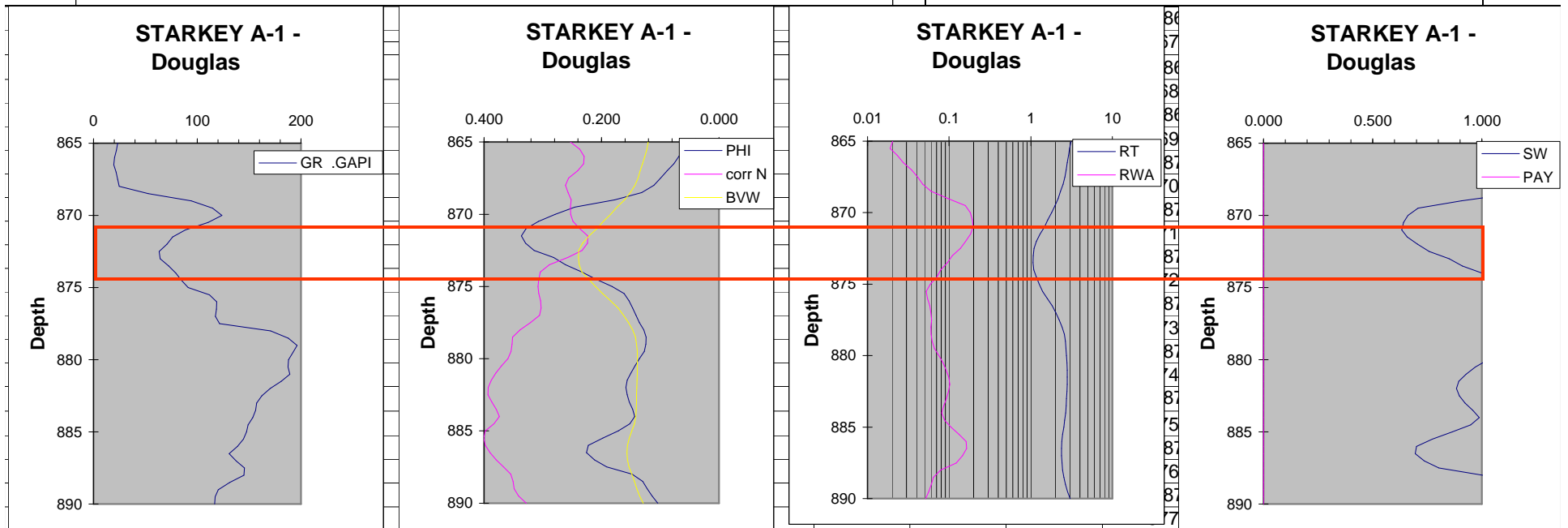
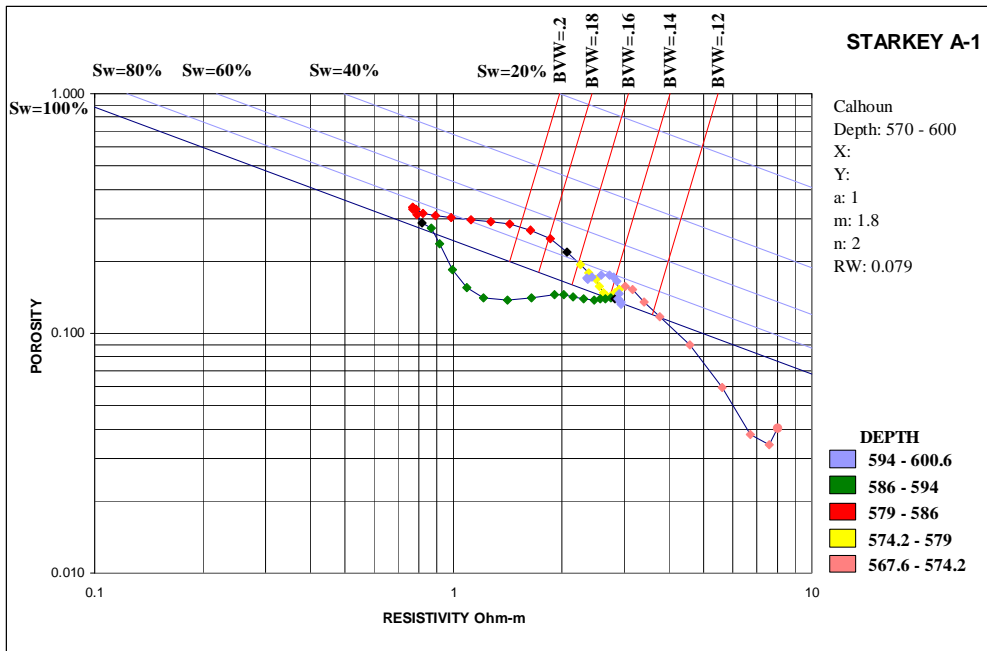


Starkey A-1

Douglas (871-874 ft)

- Gas effect on neutron porosity, separation between density porosity and BVW. No washout.
- But high BVW (>0.18) suggesting fine pores and probable lower perm
- Coarsening upward package indicated by decreasing BVW. GR < 100 API.
- **May produce gas.**



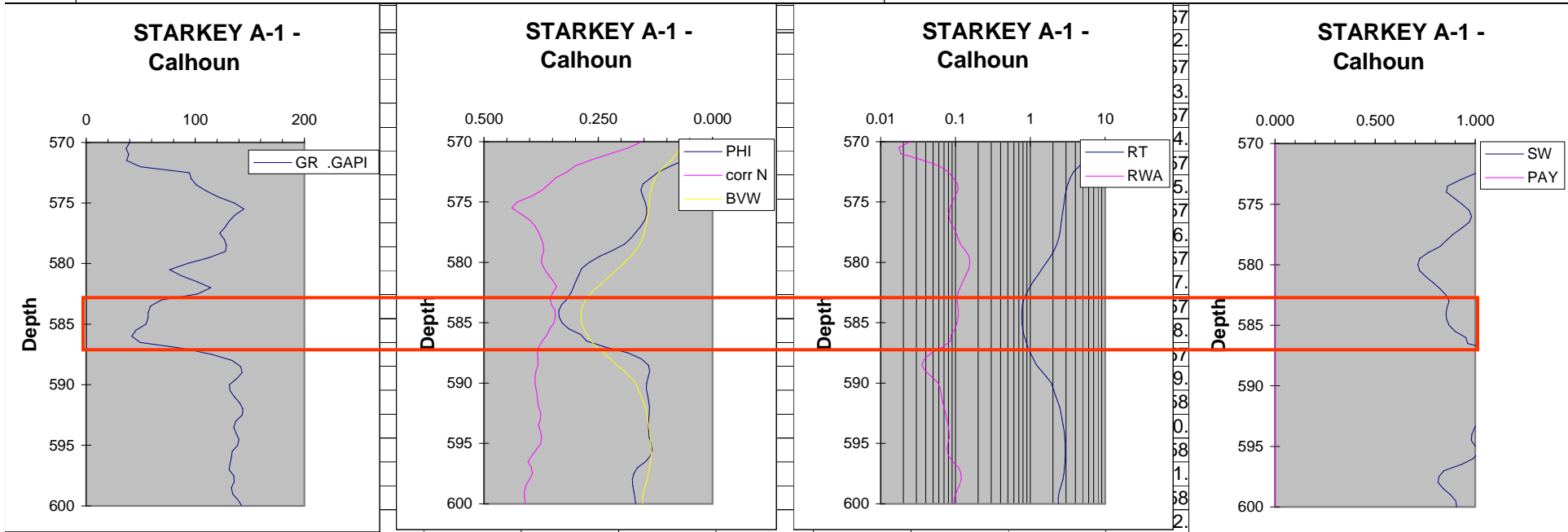


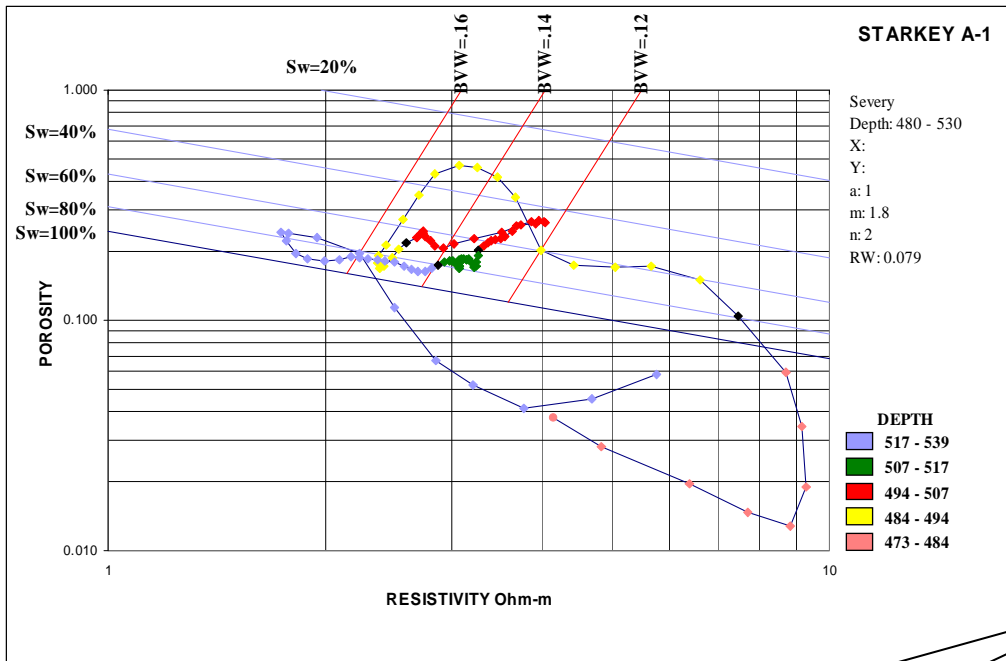
Starkey A-1

Calhoun (583-86 ft)

- Slight gas effect on neutron porosity
- high BVW (>0.2) suggest fine pores
- high Sw (+ 80%) suggests transition. Also Sw increases with depth.

• Gas in transition





Starkey A-1

Severy (500-506 ft)

- Slight gas effect on neutron porosity
- Low BVW (~0.12) suggest larger pores. Sw increases with depth. Much of sand at Sw < 60%.
- A (3 ft) coal bed is suspected to overly the sand.

• **GAS zone**

Indicative of Coal

