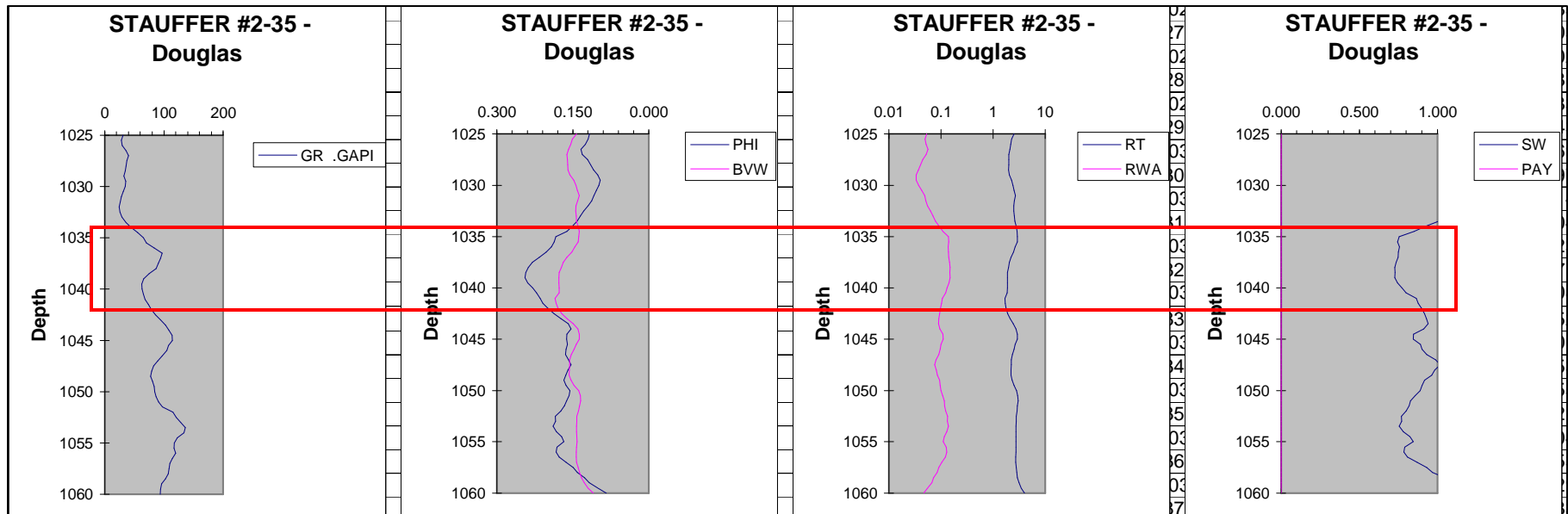
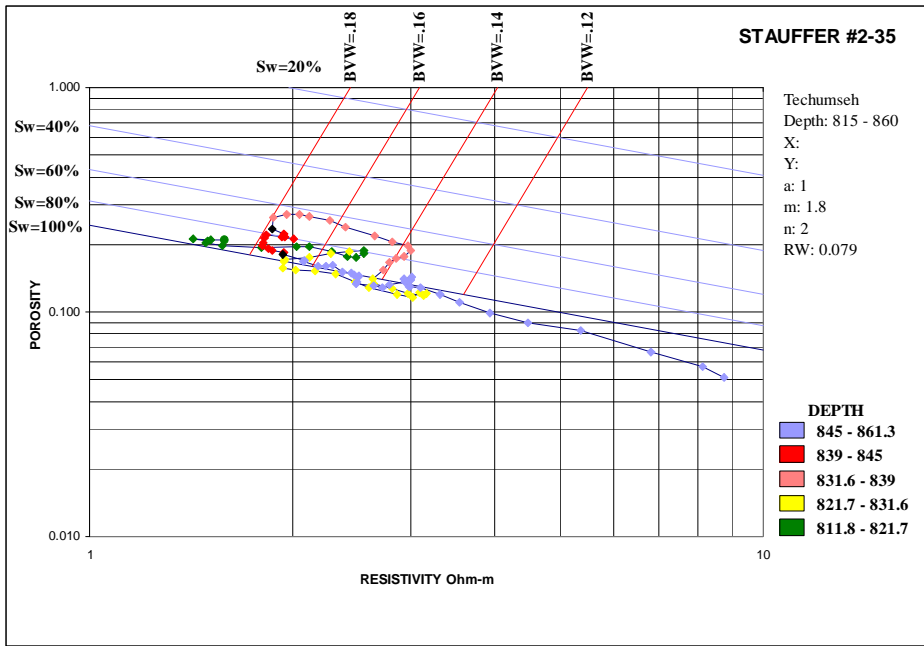


## Stauffer 2-35 Douglas (1034-42 ft)

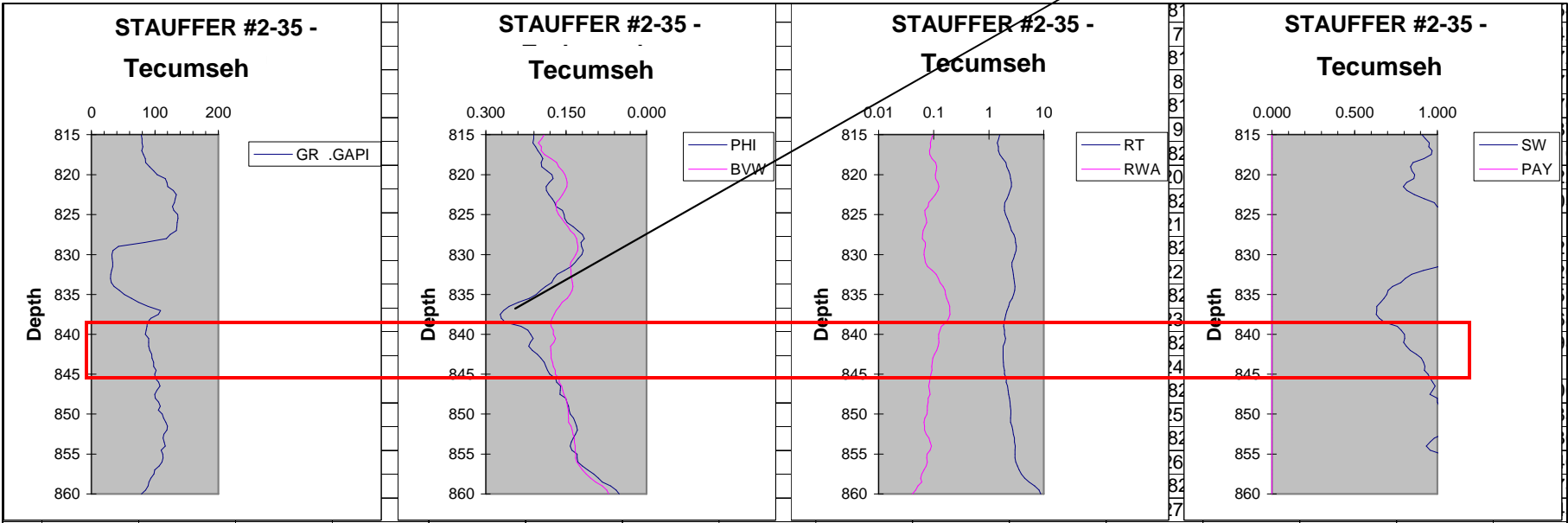
- Gas confirmed during drilling
- GR < 100 API, separation between density porosity and BVW
- Sw > 70% and increases with depth
- **Probably some gas in transitional**
- Recommend further testing





**Stauffer 2-35**  
**Tecumseh (839-45 ft)**

- Little separation between density porosity and BVW
- Sw increases with depth and exceeds 80%
- **Sand expected to be wet**



Stauffer 2-35

Shale bed overlies  
the Tecumseh sand

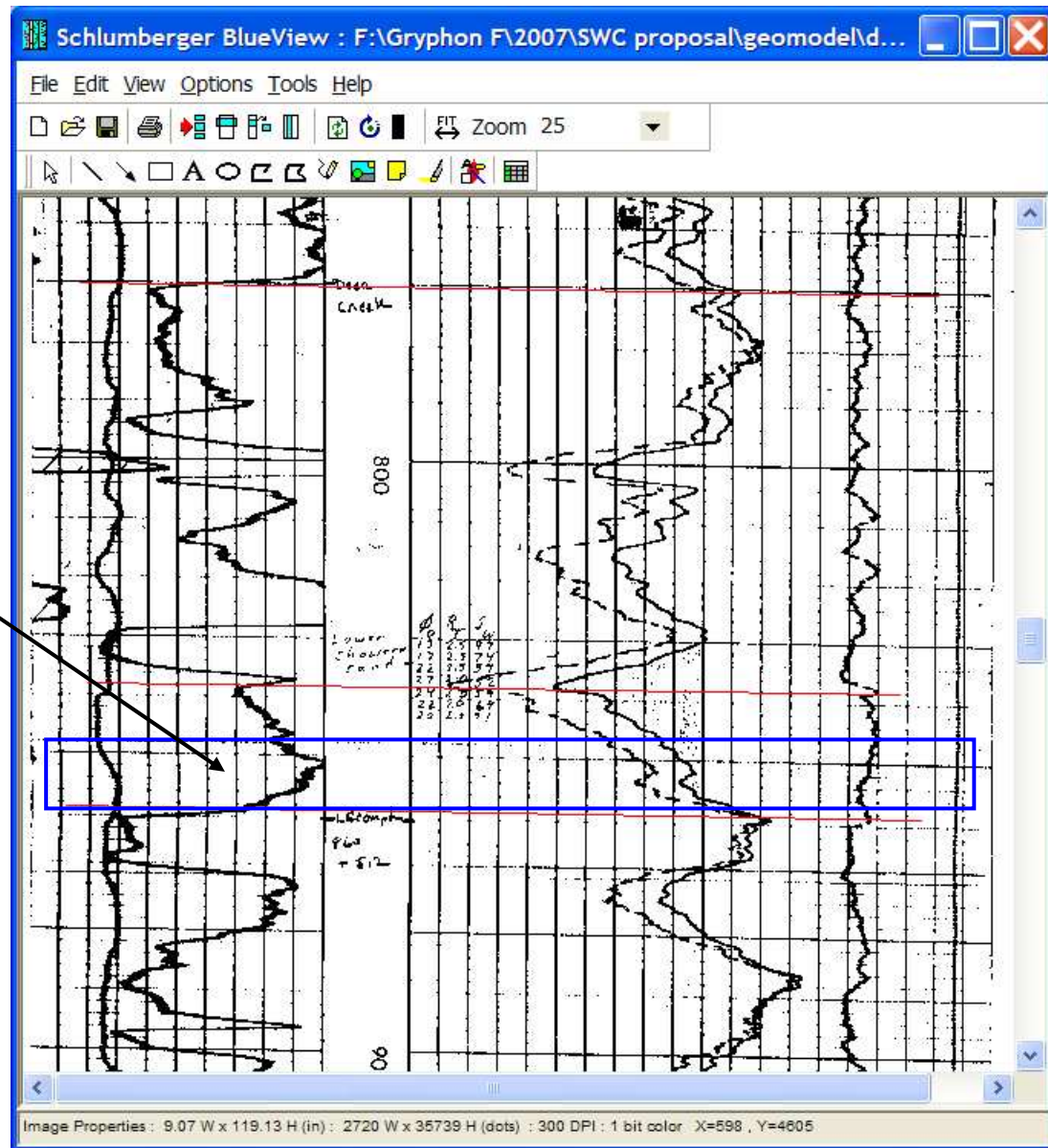
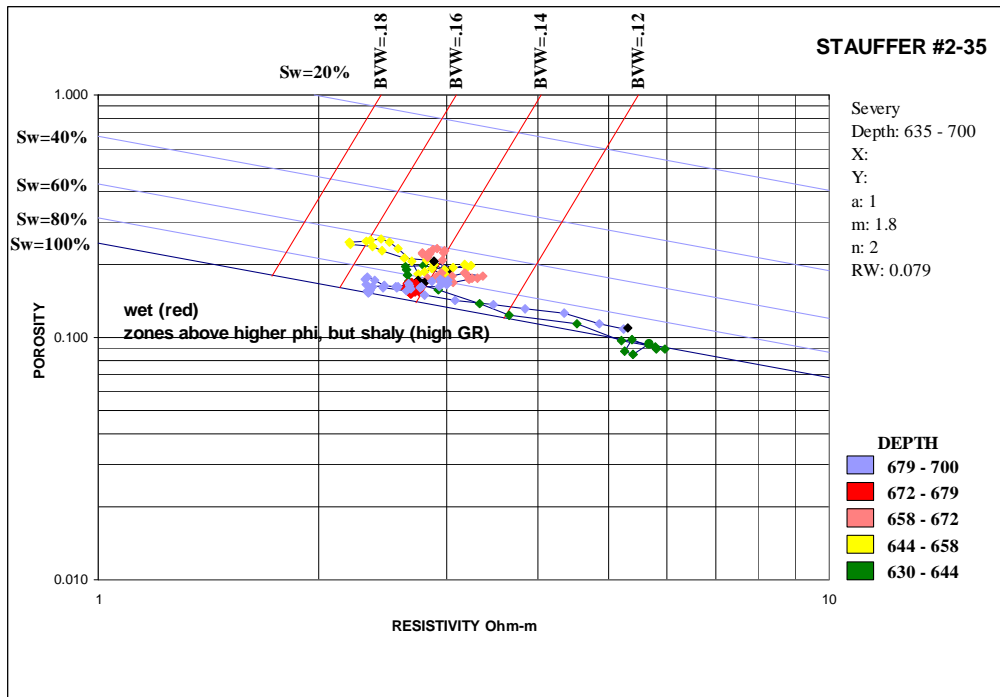


Image Properties : 9.07 W x 119.13 H (in) : 2720 W x 35739 H (dots) : 300 DPI : 1 bit color : X=598 , Y=4805



## Stauffer 2-35 Severy (672-679 ft)

- Overlap of BVW and density porosity
- Sw > 80%)
- Slight cleaning of sand upward
- **Sand expected to be wet**

