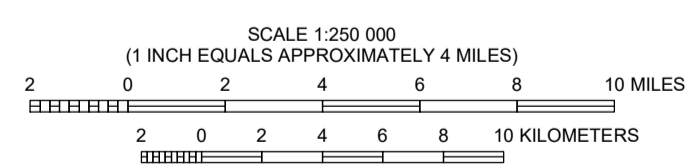


**Map Legend**

- County Seats**  
2010 Census Population
- Dodge City 25,000-49,999
  - Liberal 10,000-24,999
  - Ulysses 5,000-9,999
  - Hugoton 2,000-4,999
  - Meade Less than 2,000
- Transportation**
- U.S. Highway
  - State highway
- Boundaries**
- Township line
  - County boundary
  - State boundary



LAMBERT CONFORMAL CONIC PROJECTION  
WITH STANDARD PARALLELS AT 33° AND 45°N  
CENTRAL MERIDIAN 101°W  
NORTH AMERICAN DATUM OF 1983

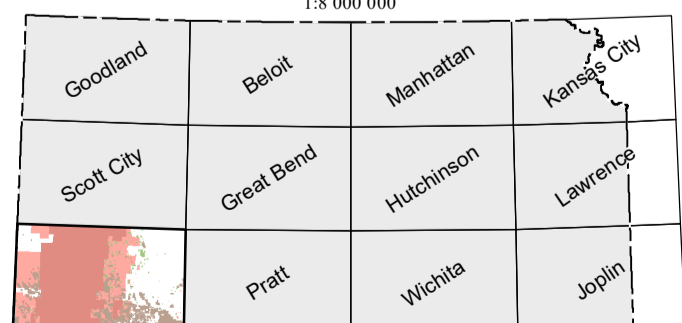


APPROXIMATE MEAN DECLINATION, 2019

**Named Fields**

- Oil field
- Gas field or area
- Oil and gas field
- Oil and gas field overlapping gas field or area
- Gas field or area overlapping gas field or area
- Oil field overlapping gas field or area

**Location Diagram**  
1:3,000,000



**Section Index**

6	5	4	3	2	1
7	8	9	10	11	12
13	14	15	16	17	18
19	20	21	22	23	24
25	26	27	28	29	30
31	32	33	34	35	36

This map was prepared by the staff of the Kansas Geological Survey and is based on Oil and Gas Fields, Dodge City Quadrangle in Kansas (1989) and subsequent revisions with the same name (1990, 1993, and 2009). Oil or gas field status is current as of February 1, 2019. Listings of fields by location, name, and cumulative production are found in the Survey's interactive oil and gas map viewer located at <http://maps.kgs.ku.edu/oilgas/index.cfm>. Field names followed by the letter "A" on the map identify fields that were abandoned at compilation time. For viewer instructions, click on the "Help" tab at the top of the page. Due to frequent data updates, field and production area boundaries may differ slightly from those shown on this map. All named fields are shown without differentiation between active and inactive. Areas of natural gas production from coal are not included on this map.

As set forth in Kansas Administrative Rule 82-3-102, field boundaries and names are determined by the Kansas Corporation Commission after considering the recommendations of the Conservation Division, Kansas Corporation Commission, and the Nomenclature Committee, Kansas Geological Society. Data from the Independent Oil and Gas Service, Inc. (IOGSI) were used to correct or verify some field area boundaries.

Roads and highways are shown on the map as represented by data from the Kansas Department of Transportation (KDOT) and other sources.

This map was produced using the ArcGIS system developed by Environmental Systems Research Institute, Inc. (Esri).

Computer compilation and cartography by Richard B. Jarvis, Dan S. Gertsema II, and John W. Dunham. Digital data compilation by Michael J. Kilfitt. 2019 revisions by John W. Dunham and Atefeh Hosseini.

The Kansas Geological Survey does not guarantee this map to be free from errors or inaccuracies and disclaims any responsibility or liability for interpretations made from the map or decisions based thereon.

**References**

- Ross, J. A., Lee, S. P., and Beene, D. L., compilers, 1993, Oil and gas fields, Dodge City quadrangle in Kansas: Kansas Geological Survey, Map M-34-9, scale 1:250,000.
- Ross, J. A., and Wong, R. K.-W., compilers, 1989, Oil and gas fields, Dodge City quadrangle in Kansas: Kansas Geological Survey, Map M-18-9, scale 1:250,000.
- Ross, J. A., and Wong, R. K.-W., compilers, 1990, Oil and gas fields, Dodge City quadrangle in Kansas: Kansas Geological Survey, Map M-22-9, scale 1:250,000.

**Suggested reference to this map:**

Kansas Geological Survey, (2009) 2019, Oil and gas fields, Dodge City quadrangle, Kansas: Kansas Geological Survey, Map M-121-9 (revised), scale 1:250,000.

Computer compilation and cartography by the Kansas Geological Survey's Cartographic Services unit. For purchase information, or for information about other KGS maps or publications, please call

**KGS Publication Sales**  
(785) 864-3965

**Kansas Geological Survey - Wichita**  
(316) 943-2343 x200

or visit the Kansas Geological Survey website at [www.kgs.ku.edu](http://www.kgs.ku.edu).