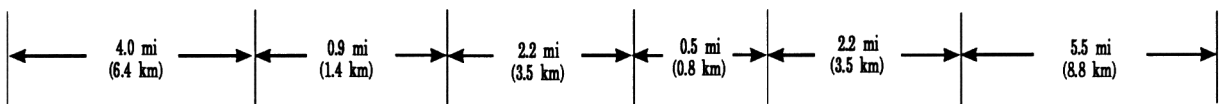


B**B'**

*

*

KGS Womeladorf #1
SE SE SE
17 T24S R22E

KGS Highbaugh #1
SW SE SW 21
T24S R22E

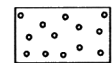
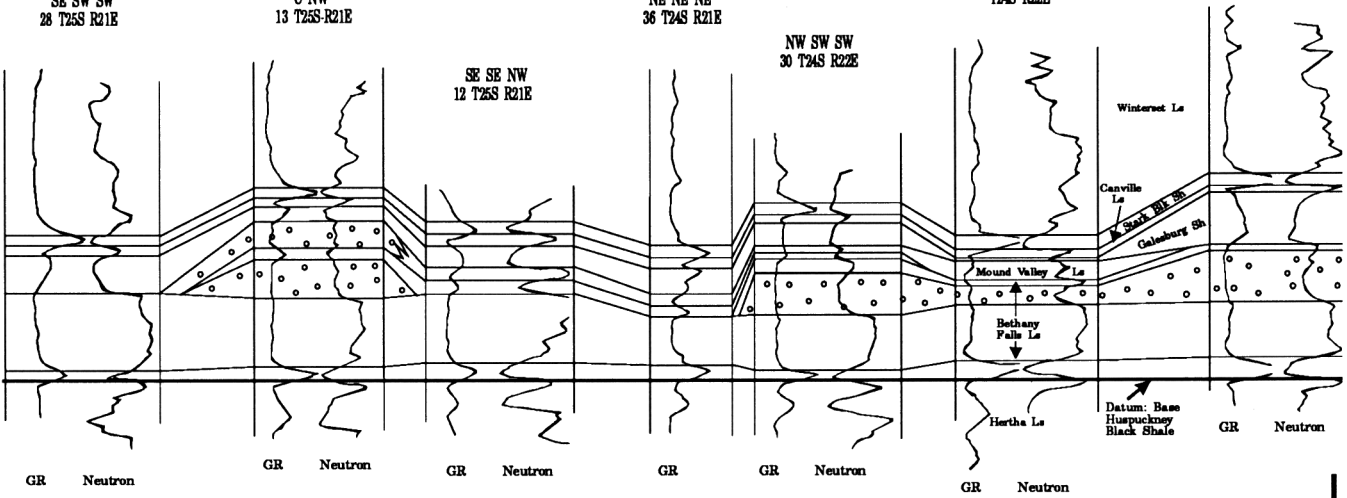
SE SW SW
28 T25S R21E

C NW
13 T25S-R21E

NE NE NE
36 T24S R21E

NW SW SW
30 T24S R22E

SE SE NW
12 T25S R21E



50 ft
(15 m)

Porous oolitic and bioclastic grainstone and packstone

* Cores used in workshop