

A

10

21

45

15

A'

Anadarko Prod. Co. #1-A Milhous  
SW NE 9-33S-32W

Cities Service Meyer # E-2  
20-33S-30W

TXO Loewden #2  
2-33S-27W

Tenneco Oil Pyle #1-7  
7-33S-25W

Petroleum Inc. Salyer #1  
3-33S-23W

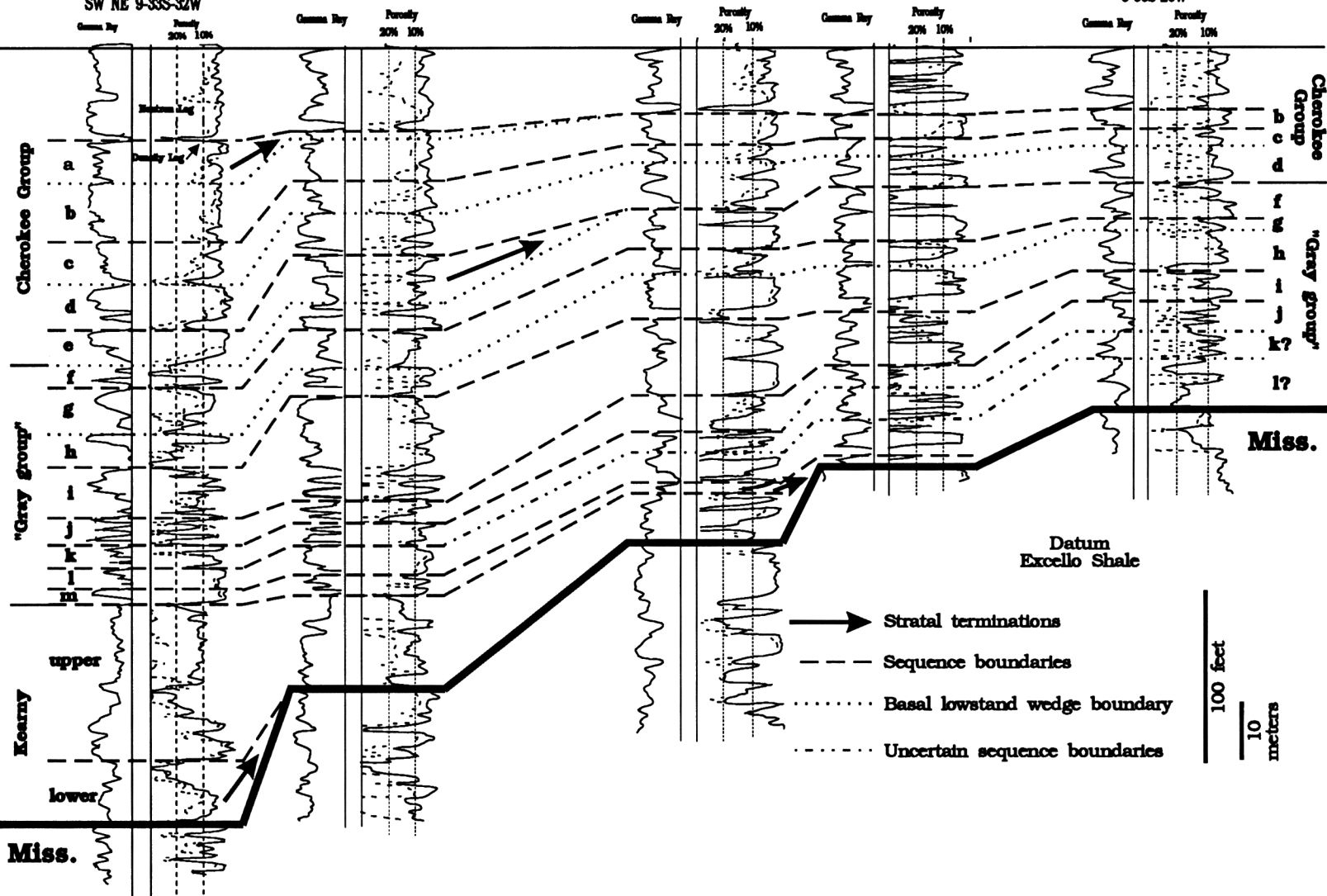


FIGURE 5—CROSS SECTION A-A' FROM EAST-CENTRAL SEWARD COUNTY EAST THROUGH MEADE AND CLARK COUNTIES.