

Kansas Coalbed Methane Program

Tim Carr, Dave Newell,
Jonathan Lange and Troy Johnson



<http://www.kgs.ku.edu/PRS/publication/2002/ofr2002-47/Tulsa2002.pdf>

November 13, 2002

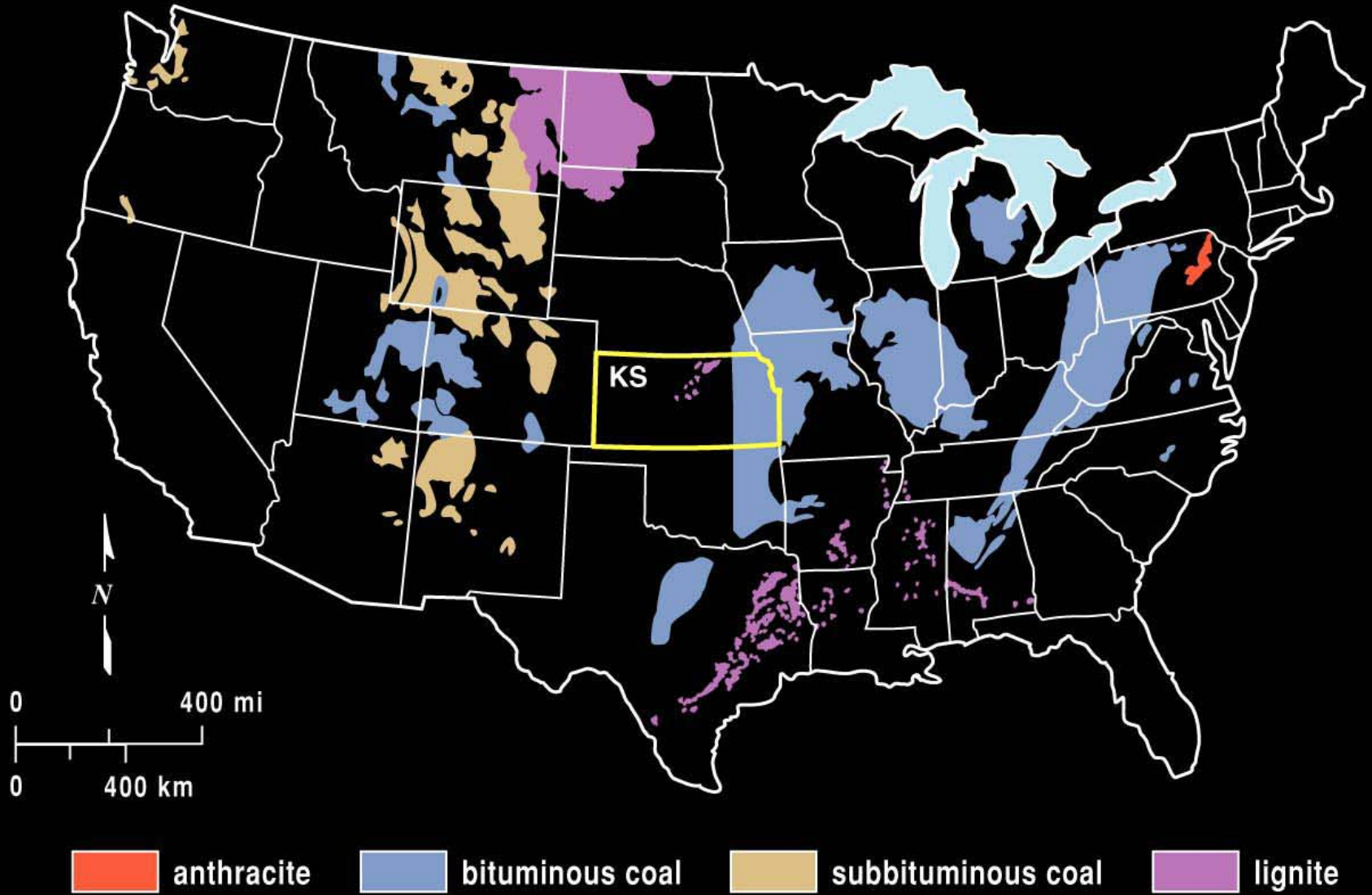
Coalbed Methane Program

- Understand Activity and Provide Online Access to Data and Information
- Understand Coal Distribution within a Regional Geologic Setting
- Understand Coal Distribution within a Depositional Setting
- Understand Coal Quality



<http://www.kgs.ku.edu/PRS/publication/2002/ofr2002-47/Tulsa2002.pdf>

Coalfields of the United States

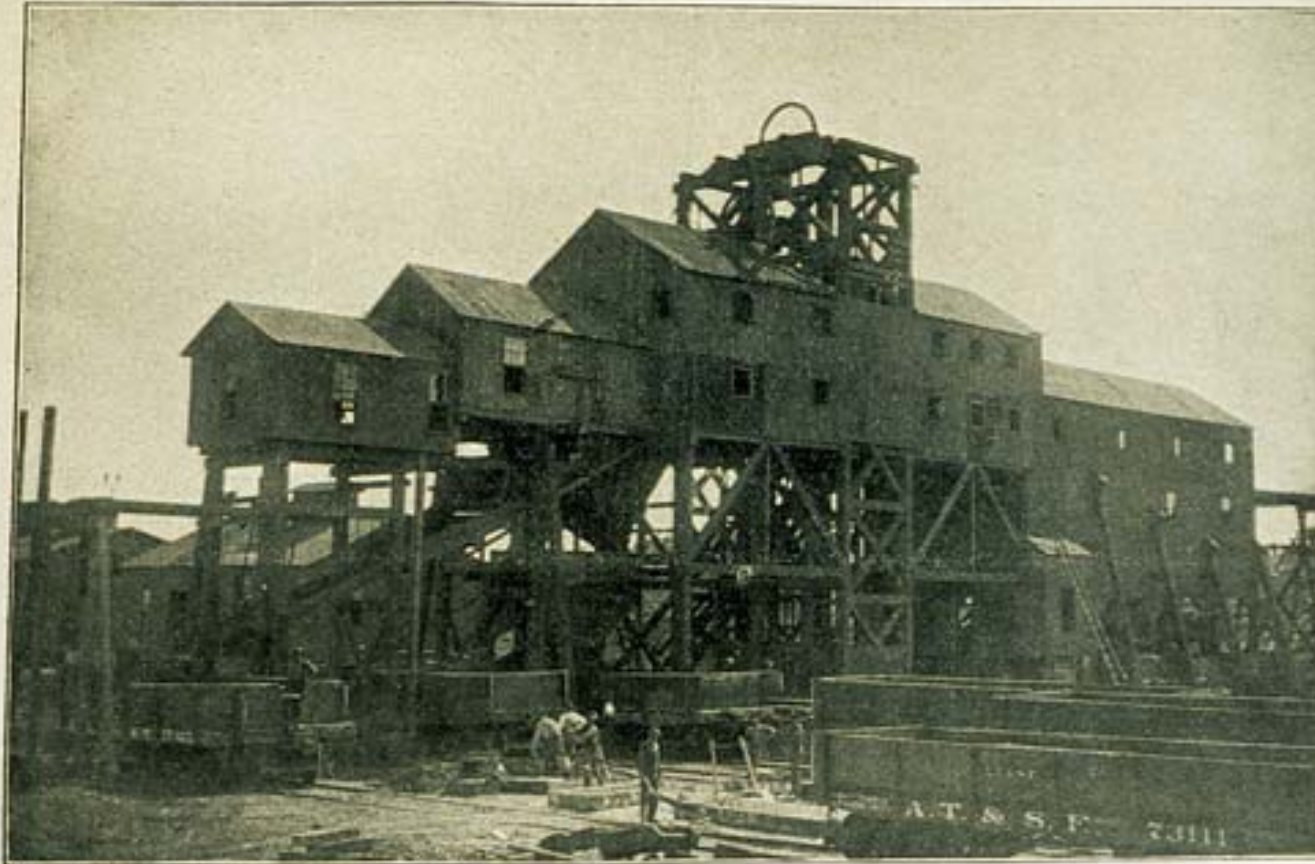


modified from Trumbull, 1960 (USGS)

Coal in Kansas

University Geological Survey of Kansas.

VOLUME III, PLATE LXX.



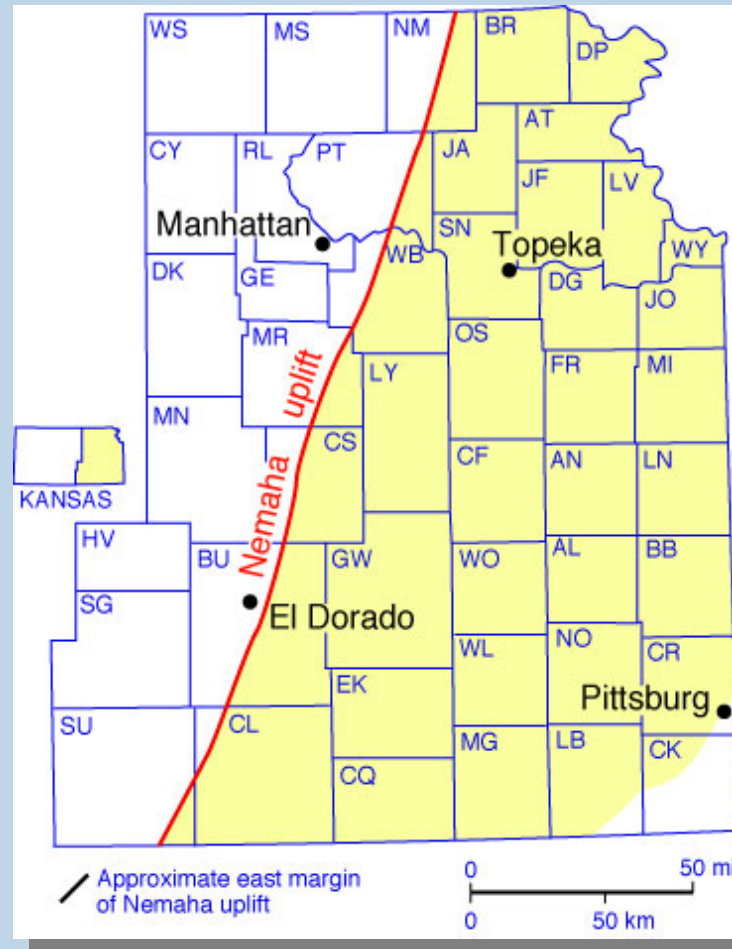
MINE No. 5 OF MOUNT CARMEL COAL COMPANY, CHICOPEE.



<http://www.kgs.ku.edu/PRS/publication/2002/ofr2002-47/Tulsa2002.pdf>

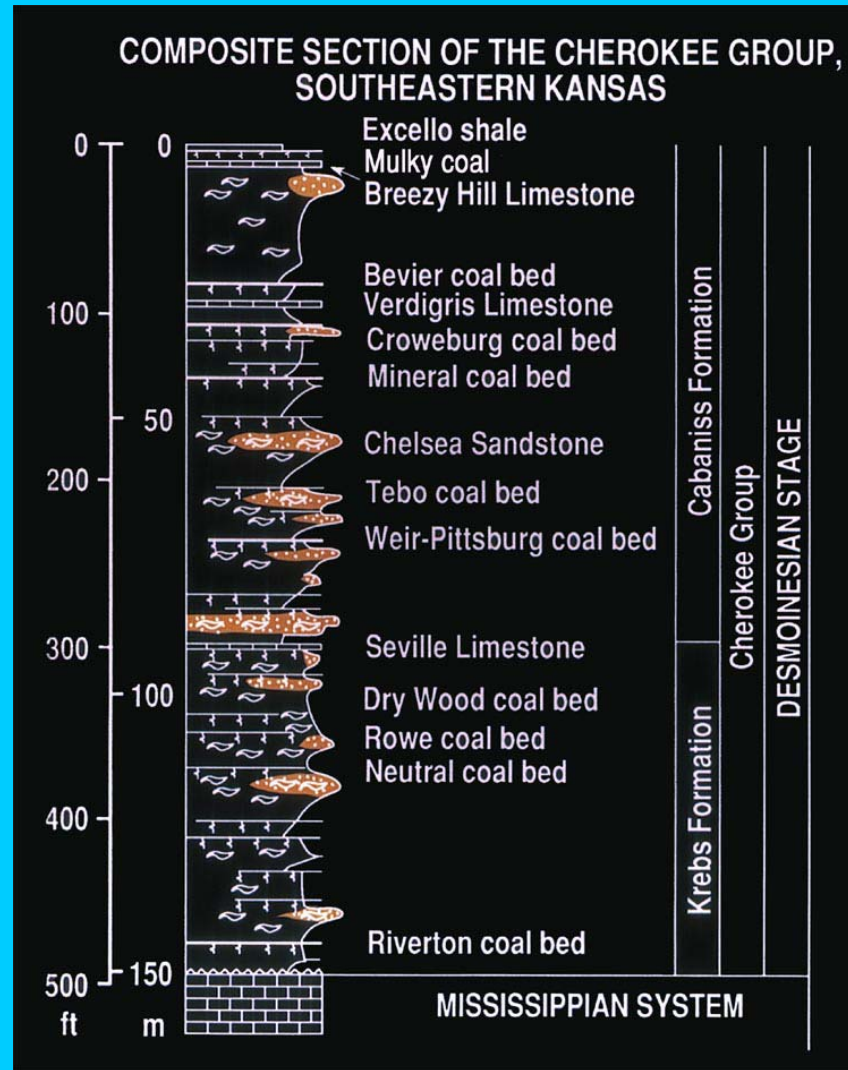
November 13, 2002

Area of Potential Coalbed Methane Development



<http://www.kgs.ku.edu/PRS/publication/2002/ofr2002-47/Tulsa2002.pdf>

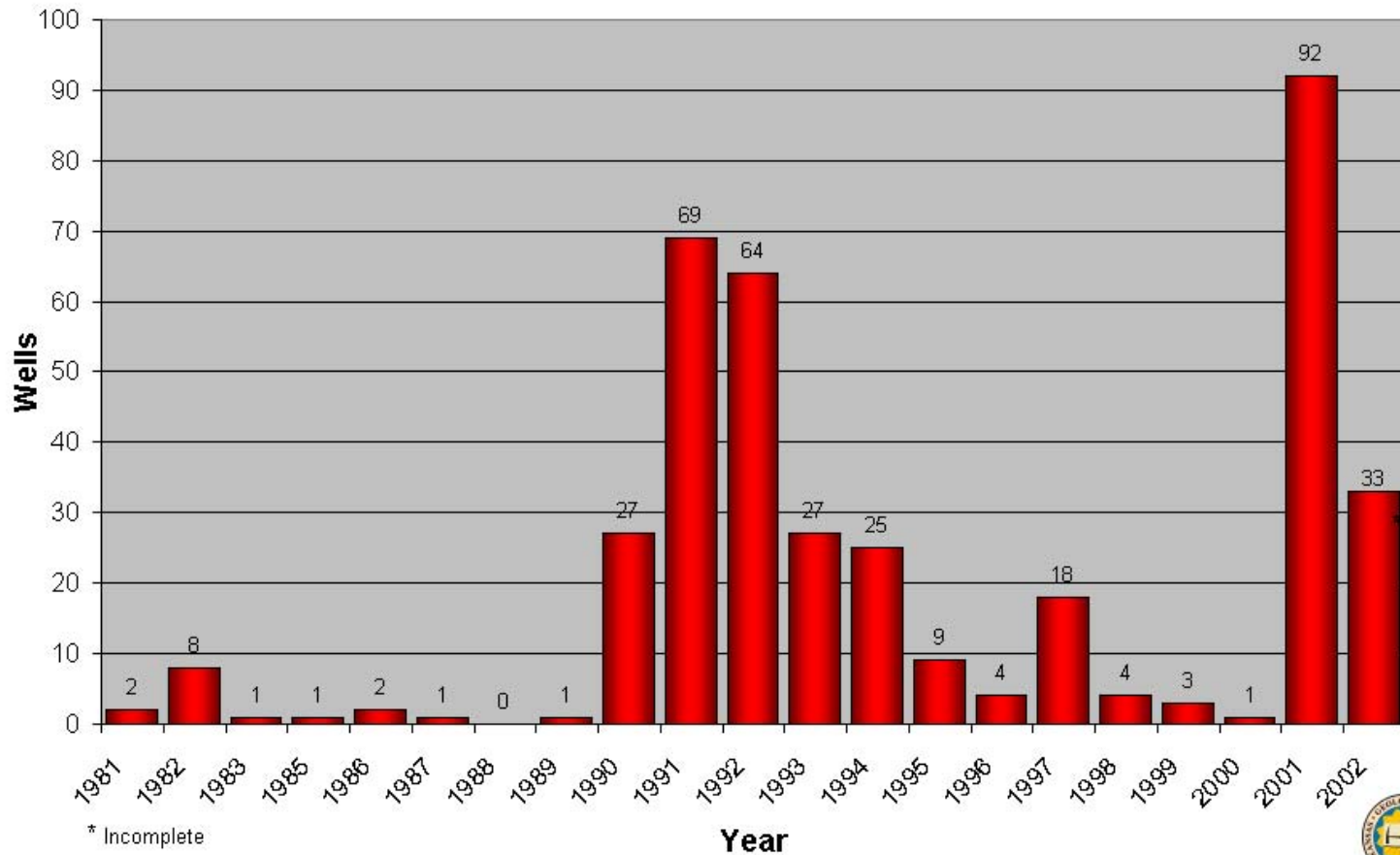
Kansas Stratigraphic Column



<http://www.kgs.ku.edu/PRS/publication/2002/ofr2002-47/Tulsa2002.pdf>

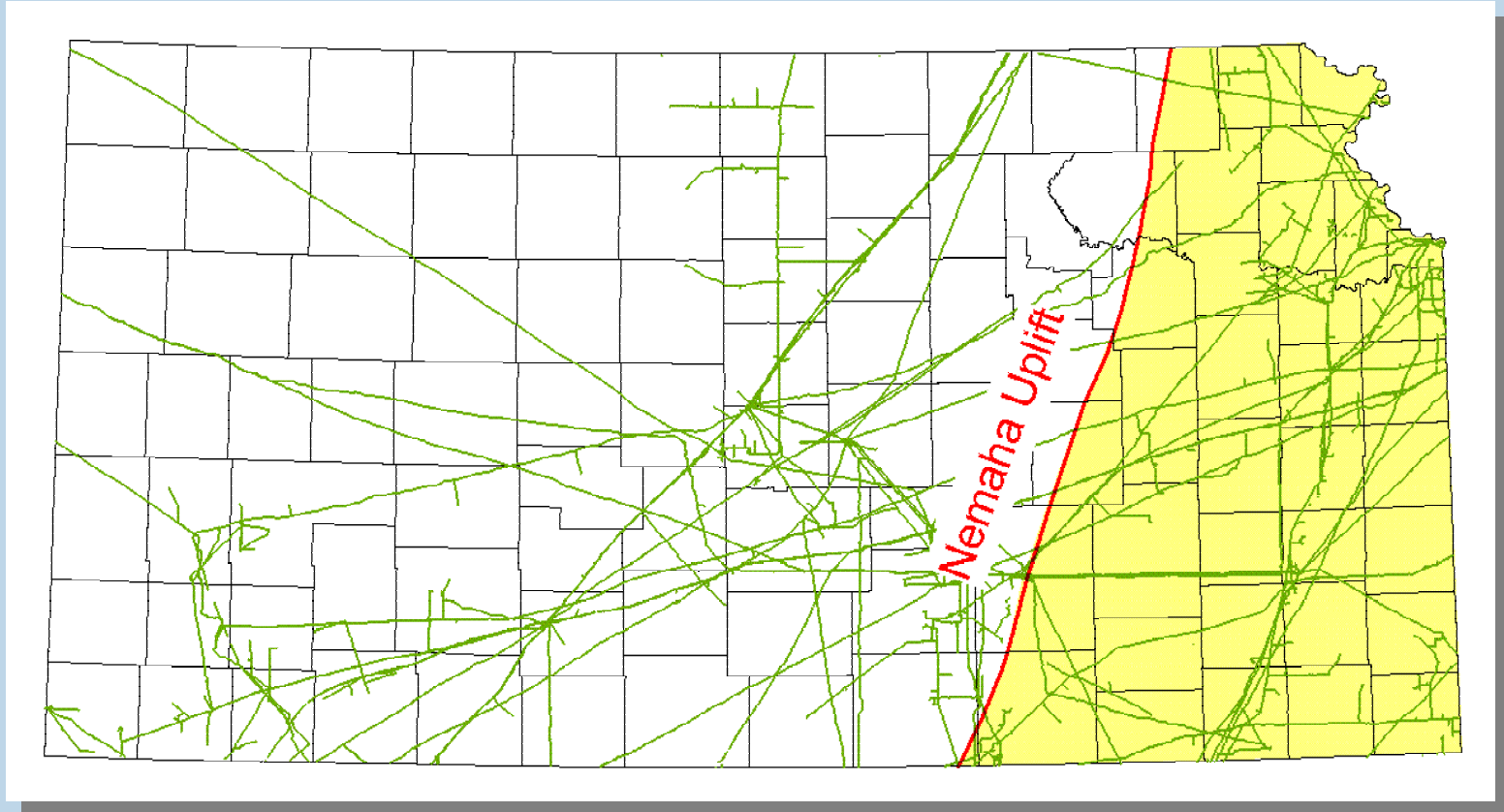
Coalbed Methane Activity

Kansas Coal Bed Methane Wells



<http://www.kgs.ku.edu/PRS/publication/2002/ofr2002-47/Tulsa2002.pdf>

Kansas Major Pipelines



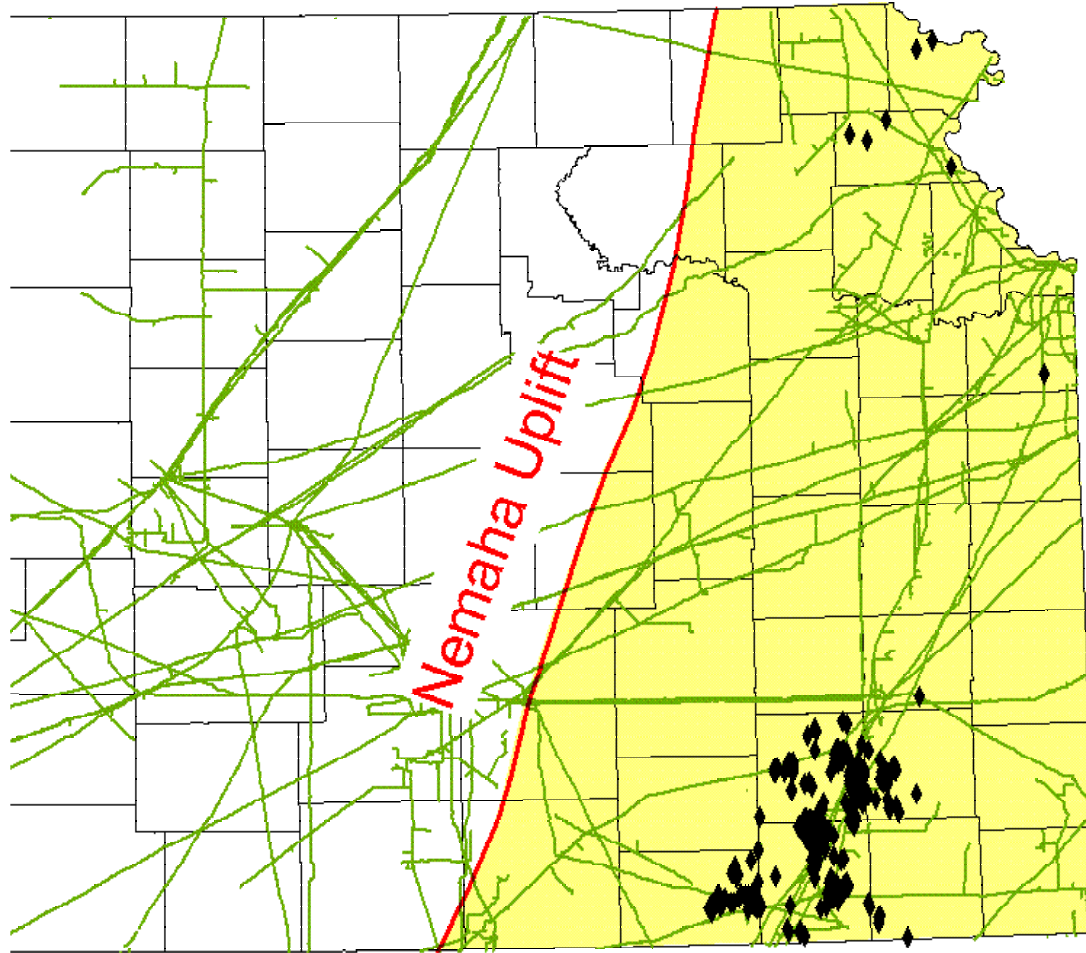
Excellent Pipeline Infrastructure



<http://www.kgs.ku.edu/PRS/publication/2002/ofr2002-47/Tulsa2002.pdf>

November 13, 2002

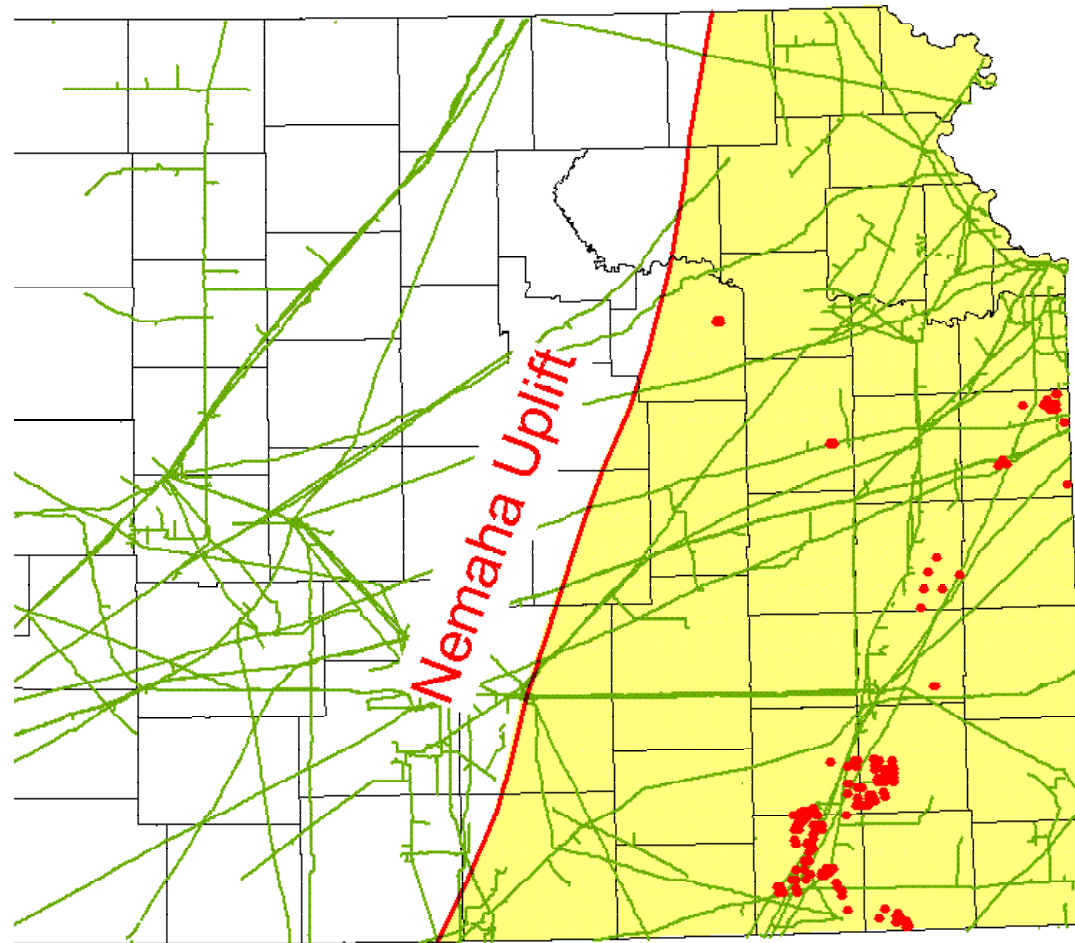
Kansas Coalbed Methane Wells



<http://www.kgs.ku.edu/PRS/publication/2002/ofr2002-47/Tulsa2002.pdf>

November 13, 2002

Kansas Coalbed Methane Activity



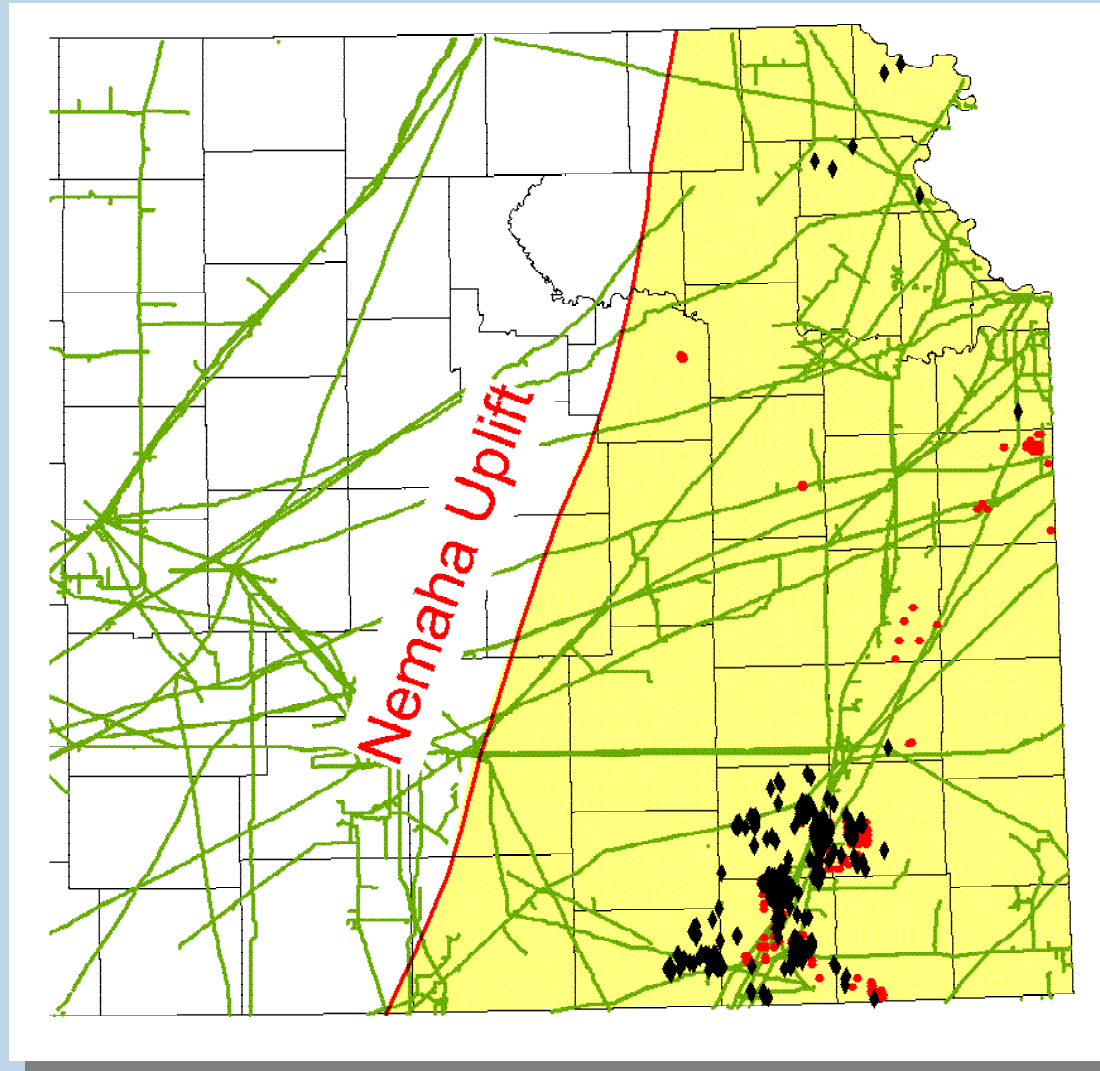
Permits last 90 days



<http://www.kgs.ku.edu/PRS/publication/2002/ofr2002-47/Tulsa2002.pdf>

November 13, 2002

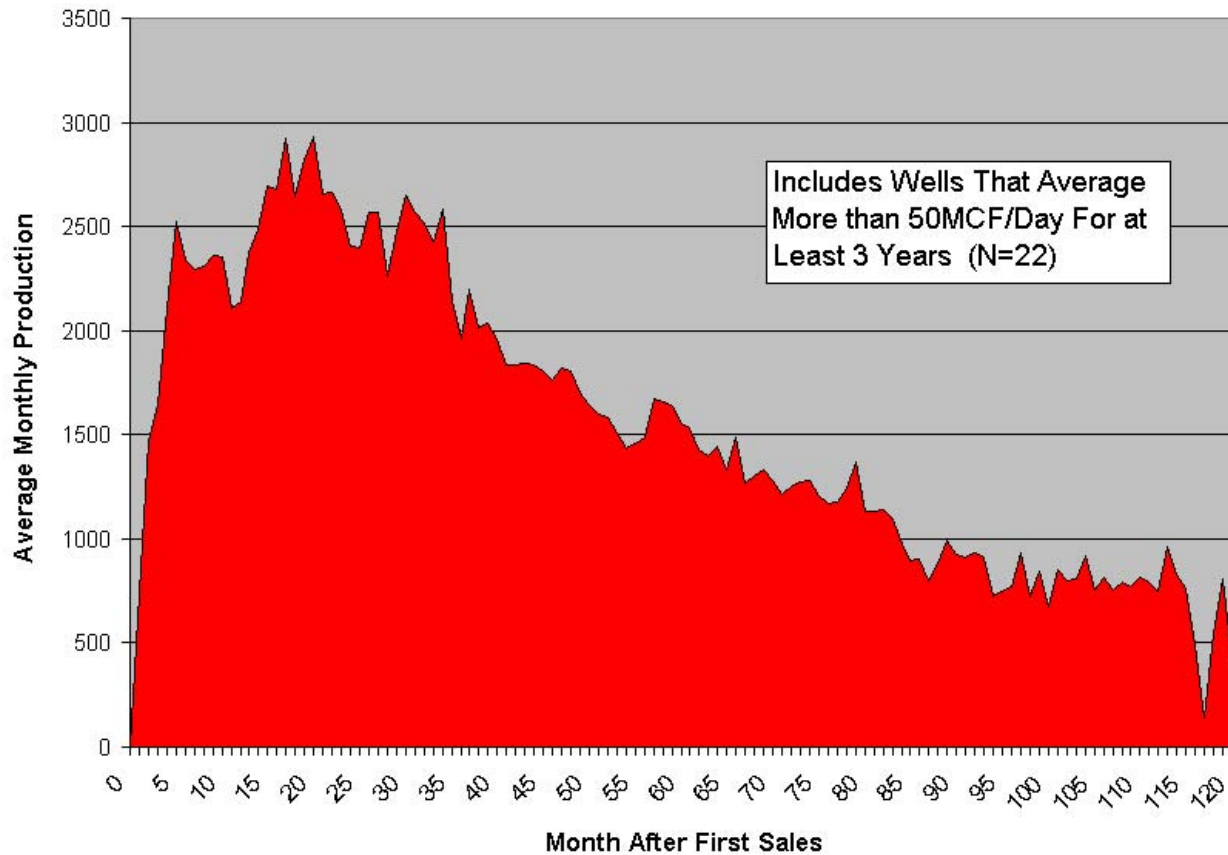
Kansas Coalbed Methane Activity



<http://www.kgs.ku.edu/PRS/publication/2002/ofr2002-47/Tulsa2002.pdf>

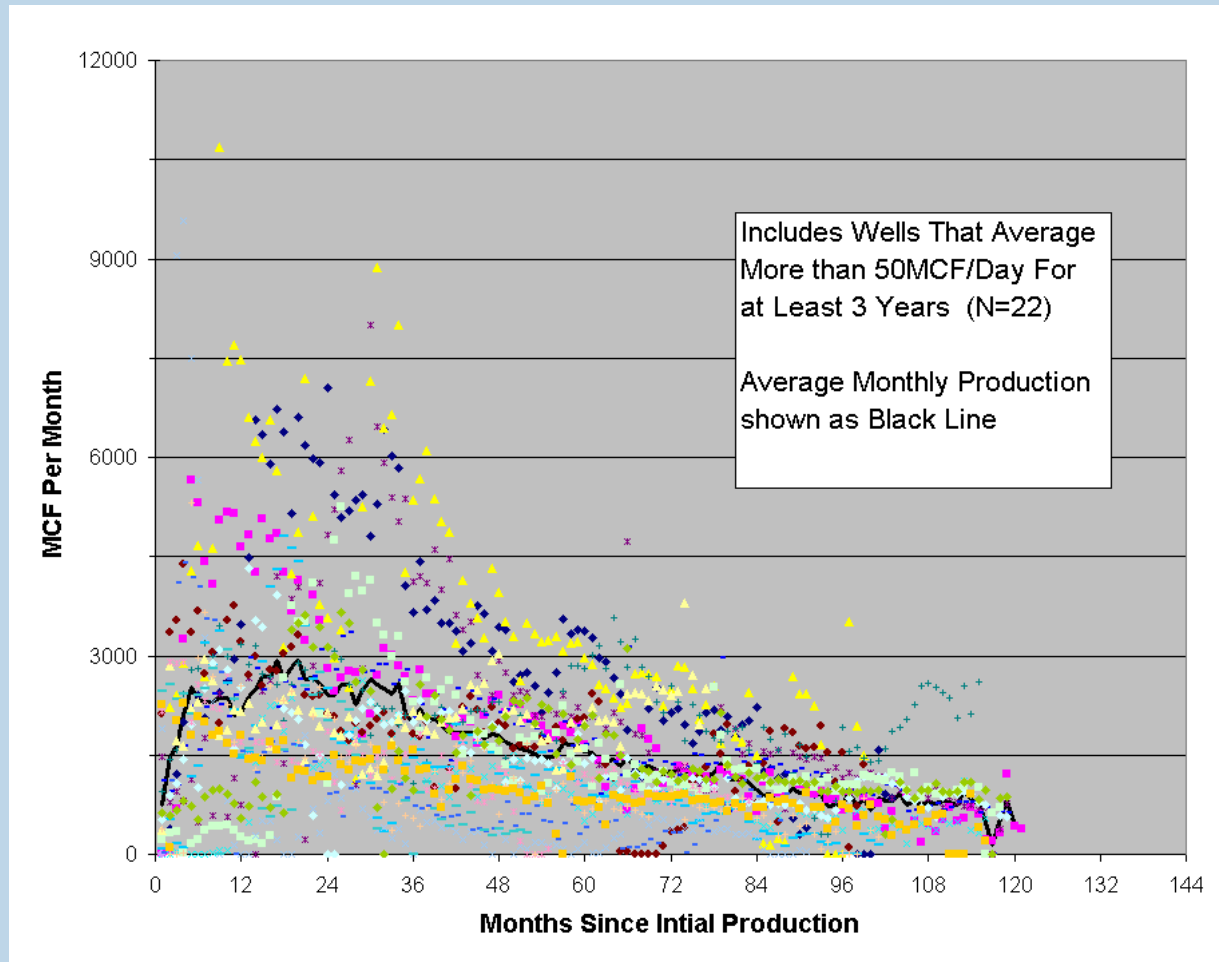
November 13, 2002

Kansas Coalbed Methane Monthly Production



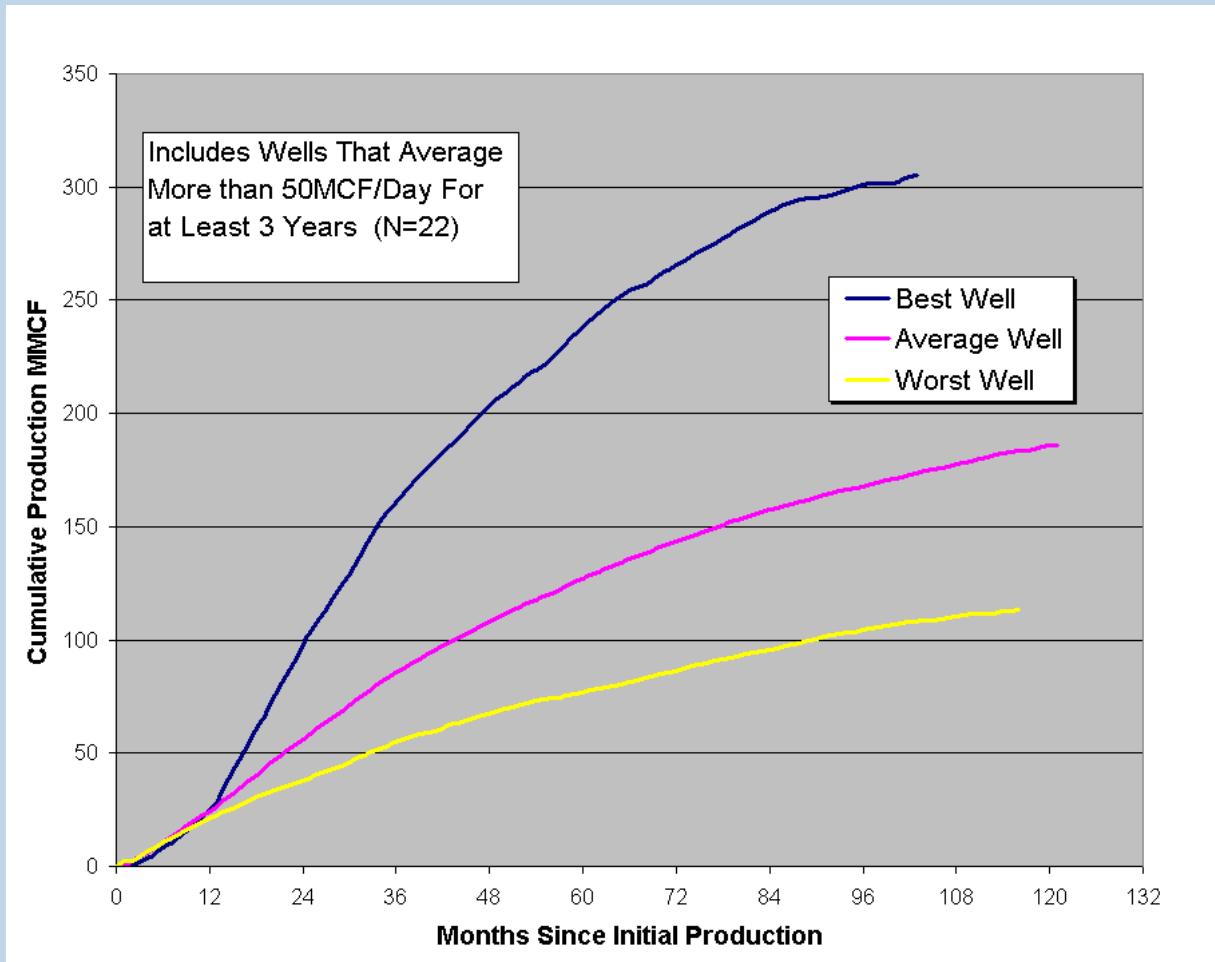
<http://www.kgs.ku.edu/PRS/publication/2002/ofr2002-47/Tulsa2002.pdf>

Kansas Coalbed Methane Monthly Production



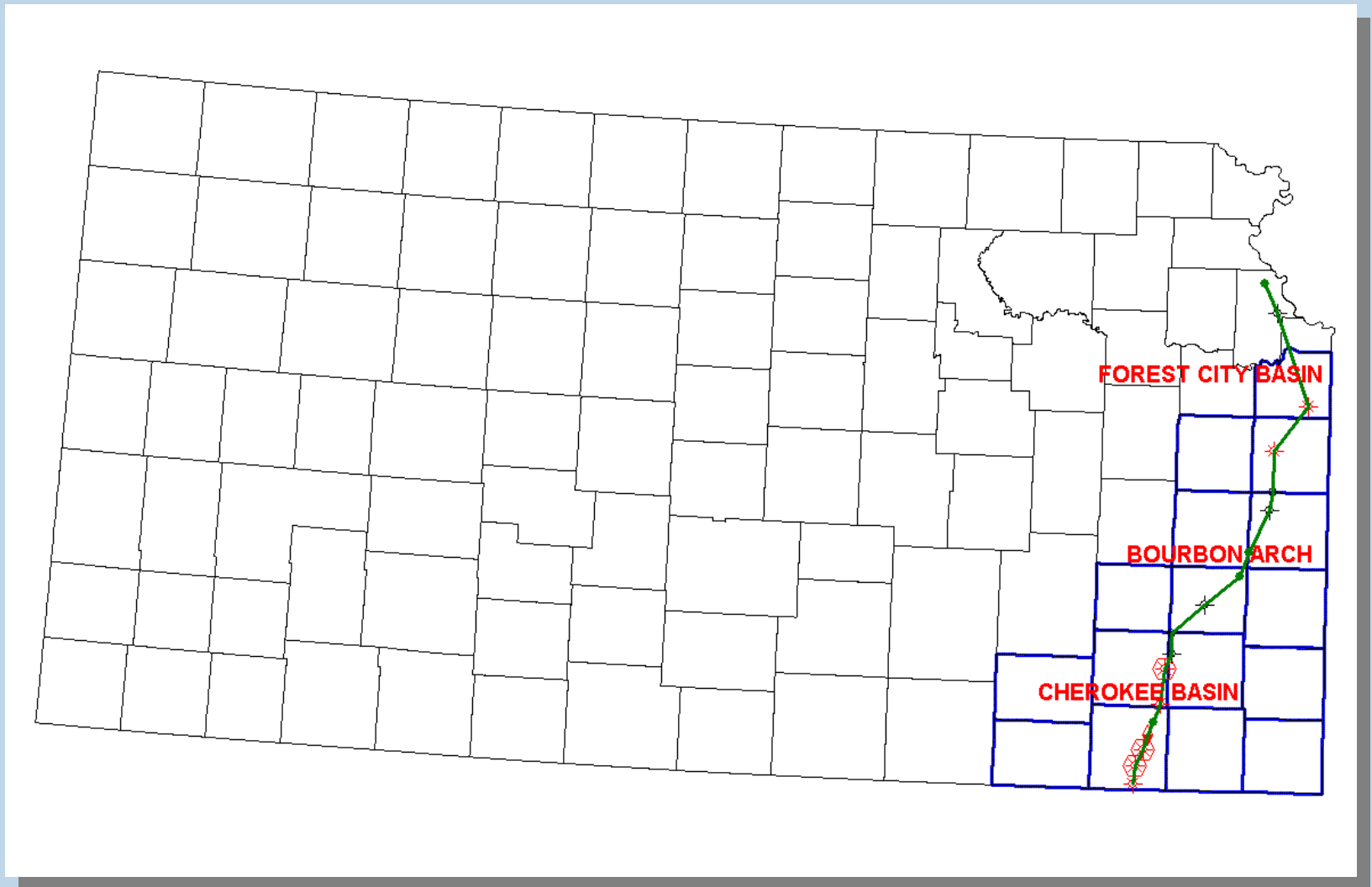
<http://www.kgs.ku.edu/PRS/publication/2002/ofr2002-47/Tulsa2002.pdf>

Kansas Coalbed Methane Cumulative Production



<http://www.kgs.ku.edu/PRS/publication/2002/ofr2002-47/Tulsa2002.pdf>

Cherokee Cross-Section



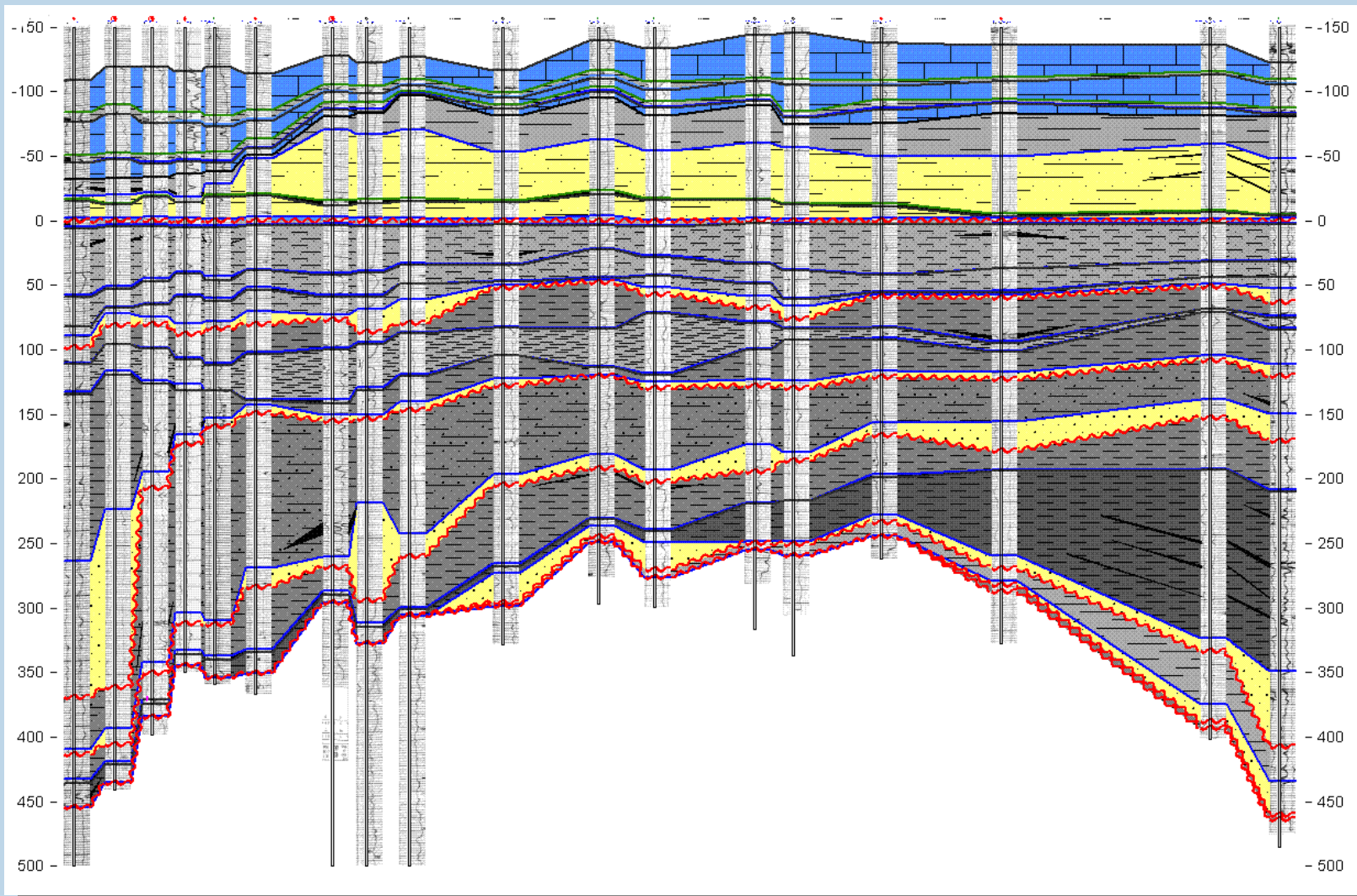
<http://www.kgs.ku.edu/PRS/publication/2002/ofr2002-47/Tulsa2002.pdf>

November 13, 2002

Cherokee Cross-Section

South

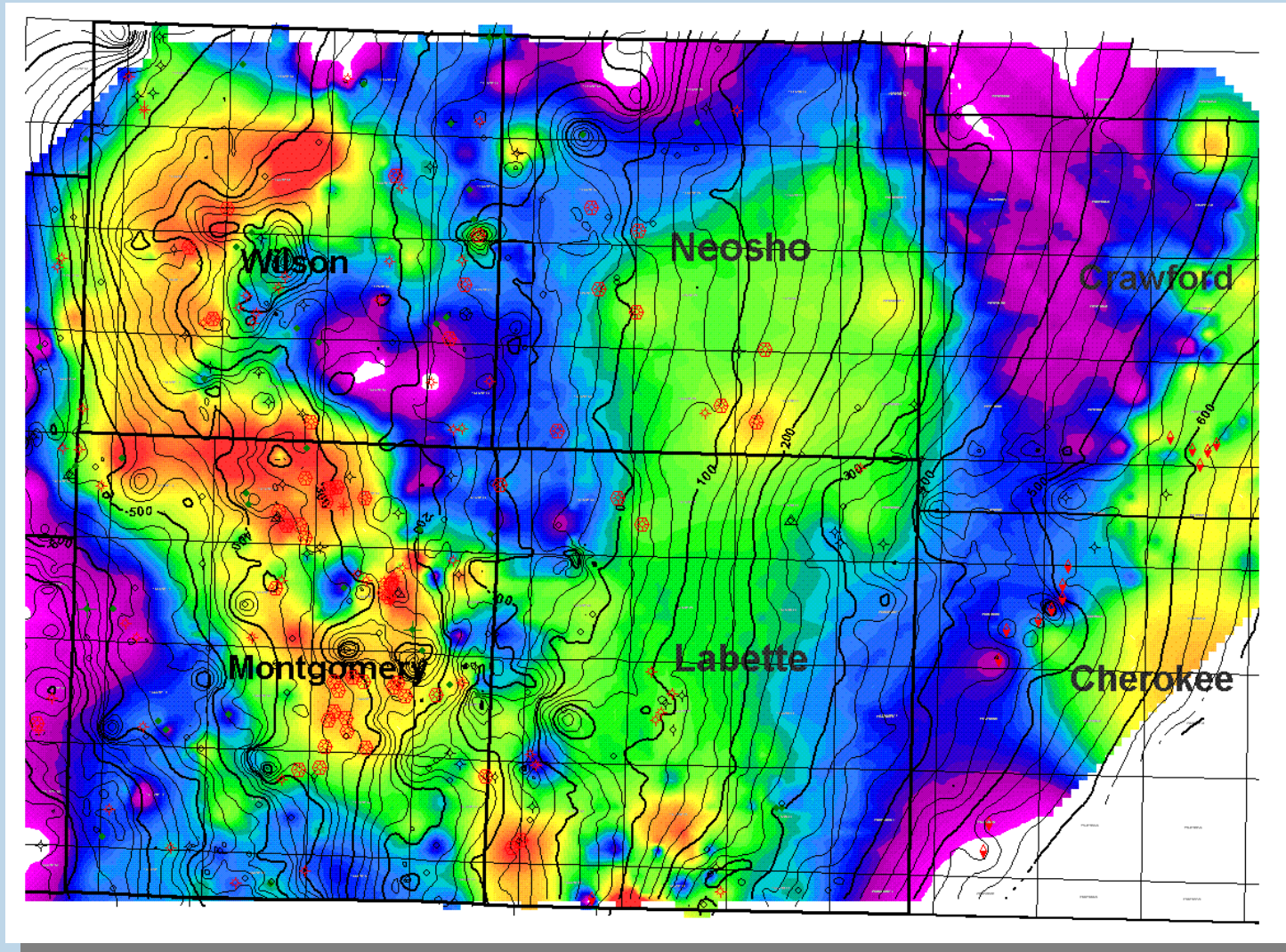
North



<http://www.kgs.ku.edu/PRS/publication/2002/ofr2002-47/Tulsa2002.pdf>

November 13, 2002

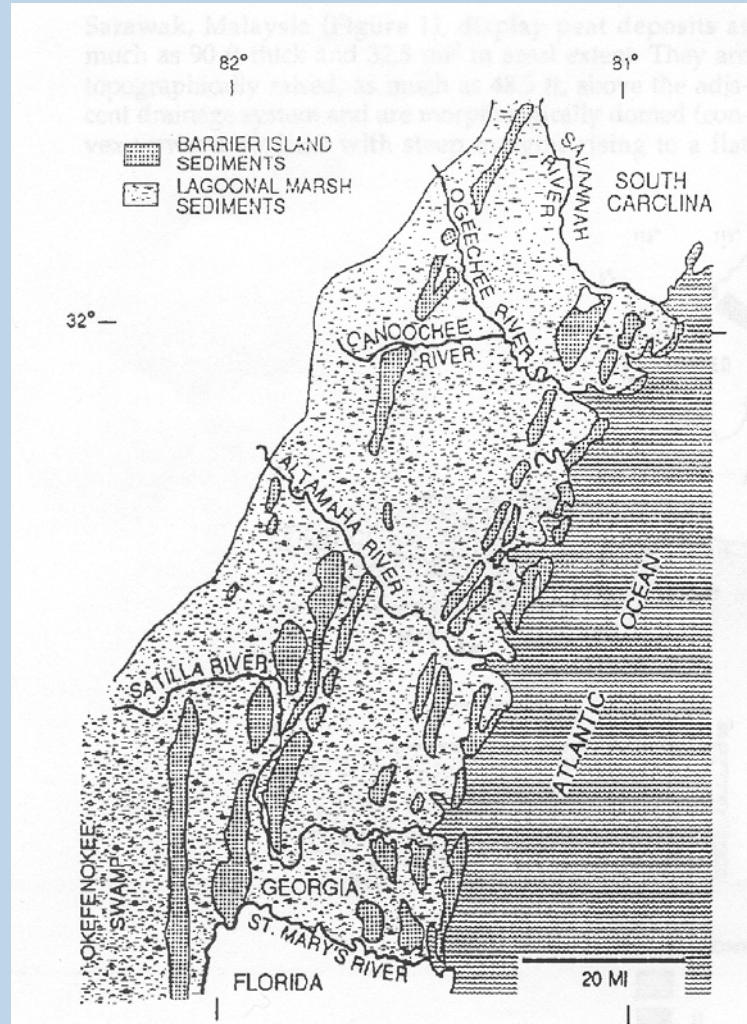
Weir-Pitt Coal



<http://www.kgs.ku.edu/PRS/publication/2002/ofr2002-47/Tulsa2002.pdf>

November 13, 2002

Weir-Pitt Coal



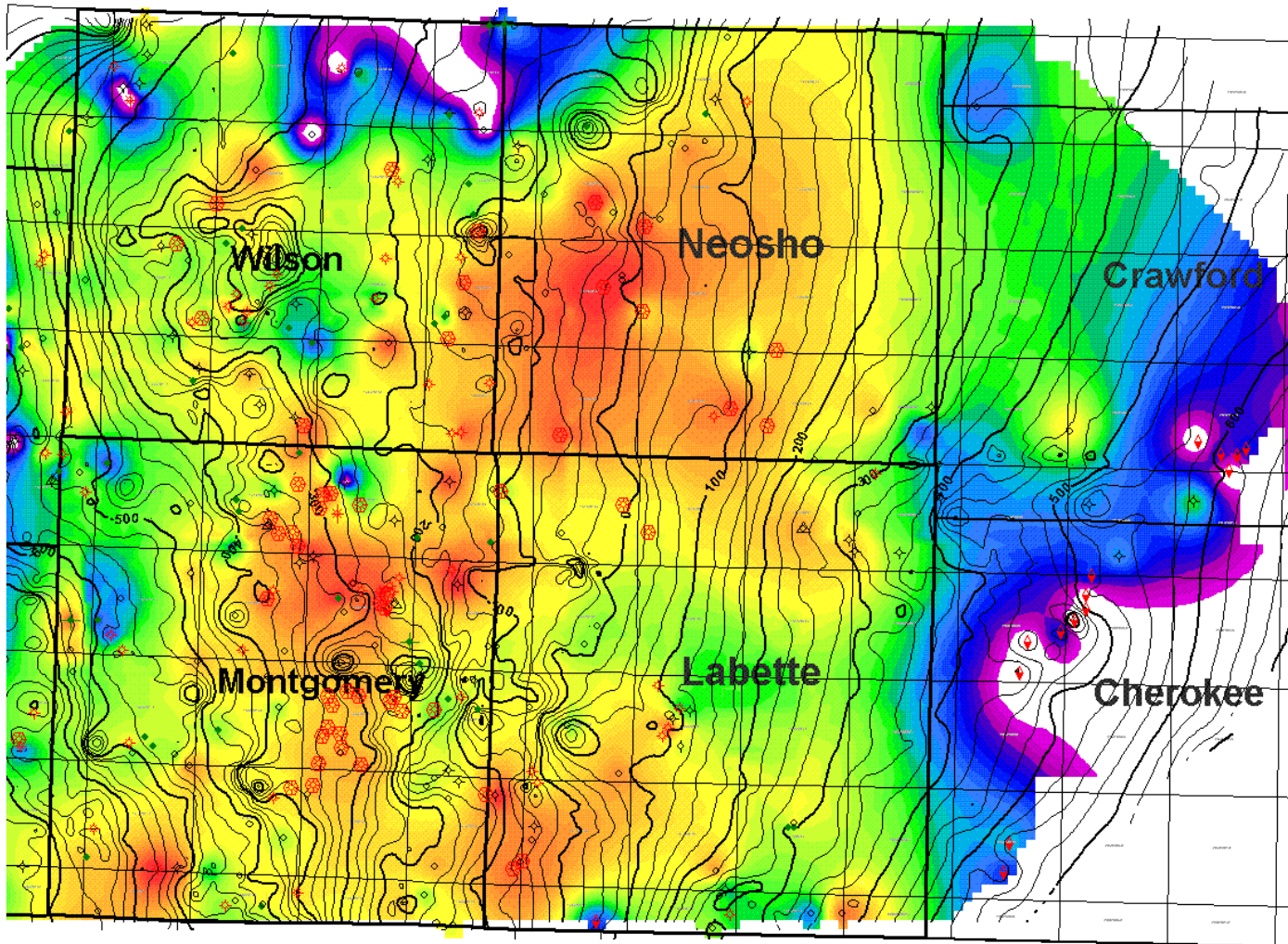
Hoyt and Hails, 1969

<http://www.kgs.ku.edu/PRS/publication/2002/ofr2002-47/Tulsa2002.pdf>

November 13, 2002

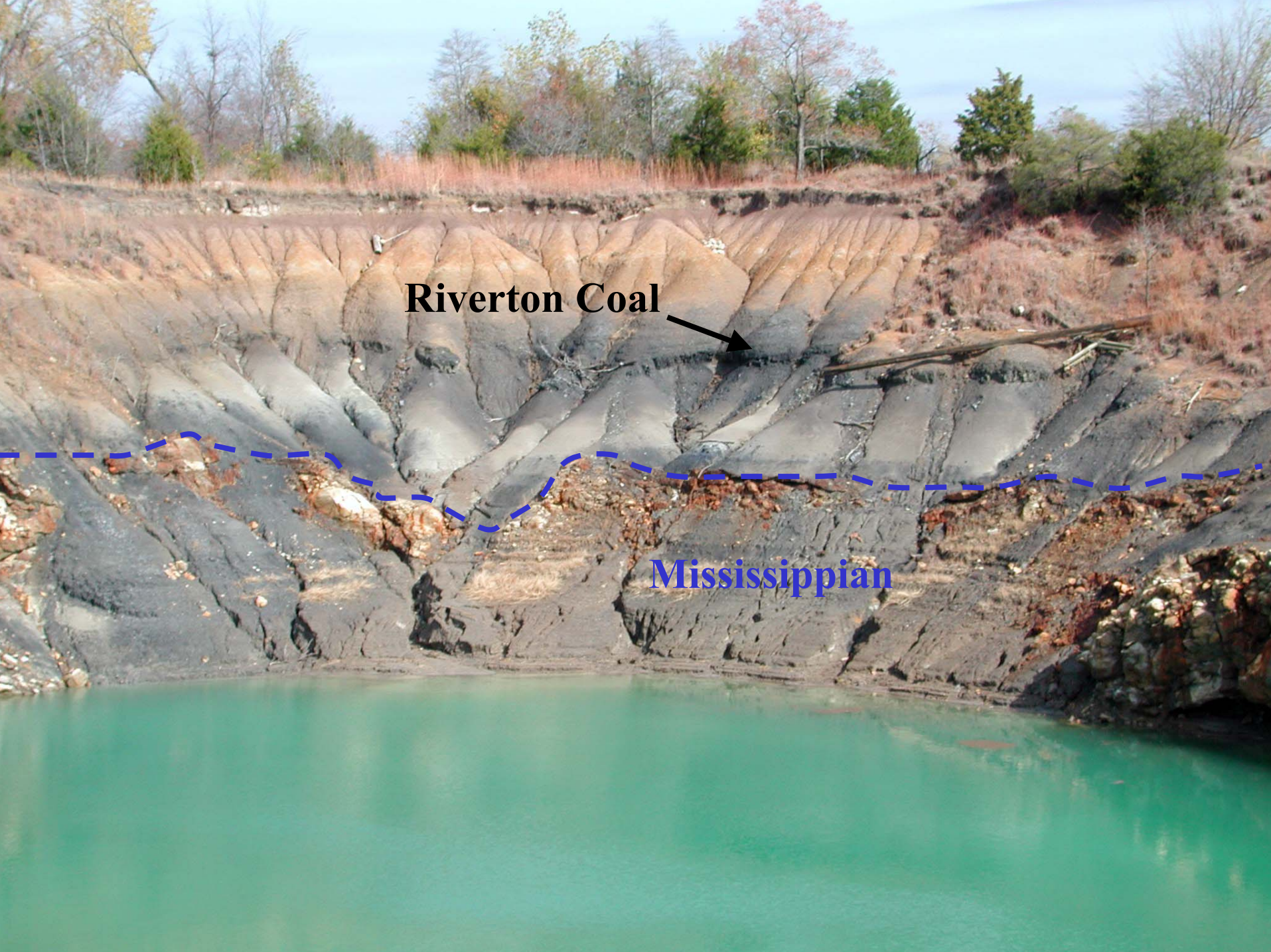


Riverton Coal



<http://www.kgs.ku.edu/PRS/publication/2002/ofr2002-47/Tulsa2002.pdf>

November 13, 2002

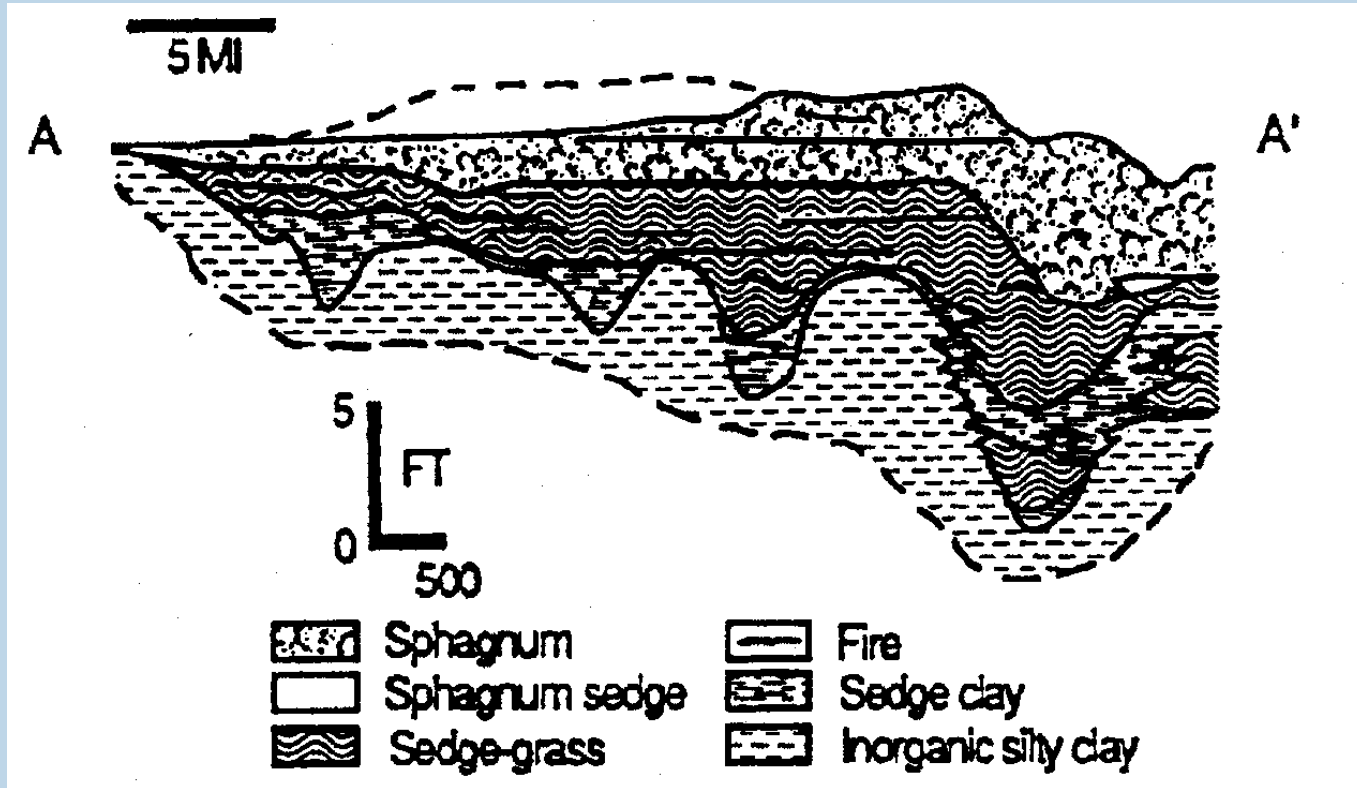


Riverton Coal



Mississippian

Riverton Coal



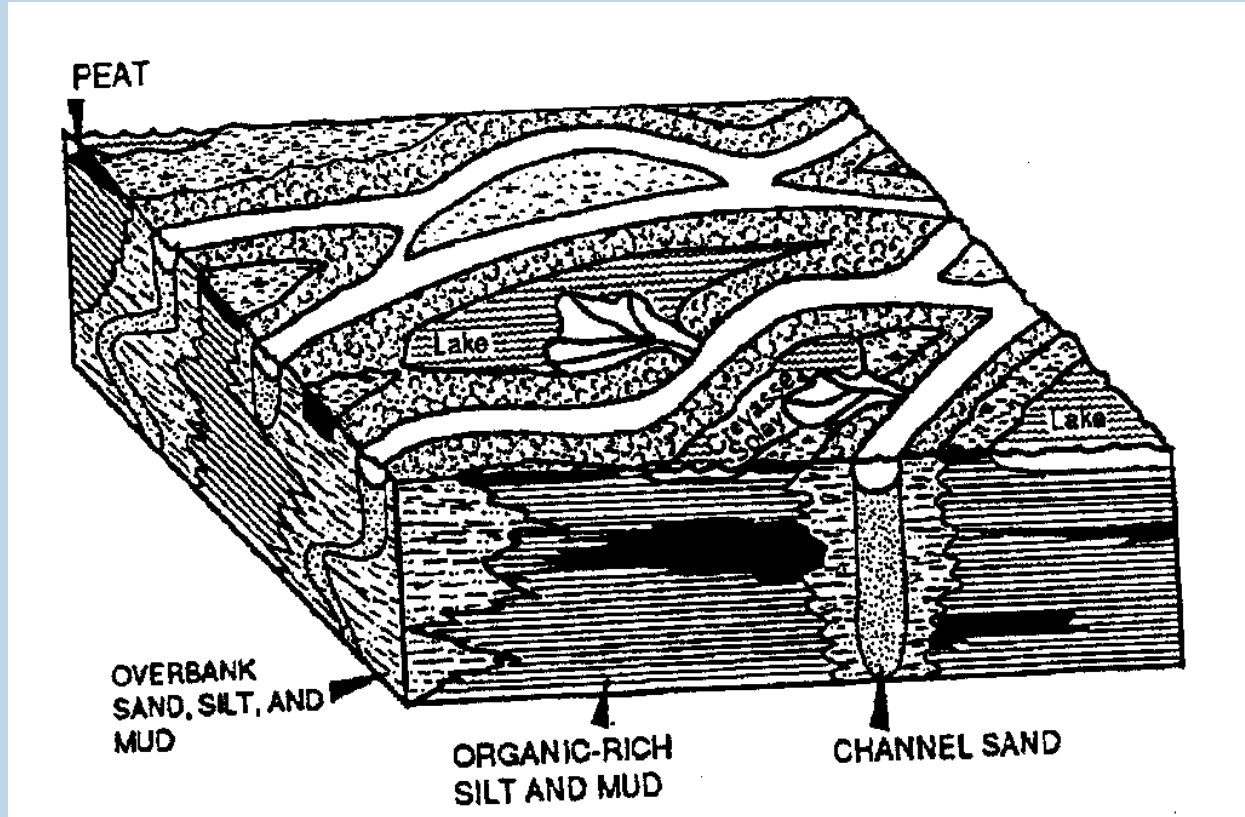
Styan and Bustin, 1984

<http://www.kgs.ku.edu/PRS/publication/2002/ofr2002-47/Tulsa2002.pdf>

November 13, 2002



Local Coals



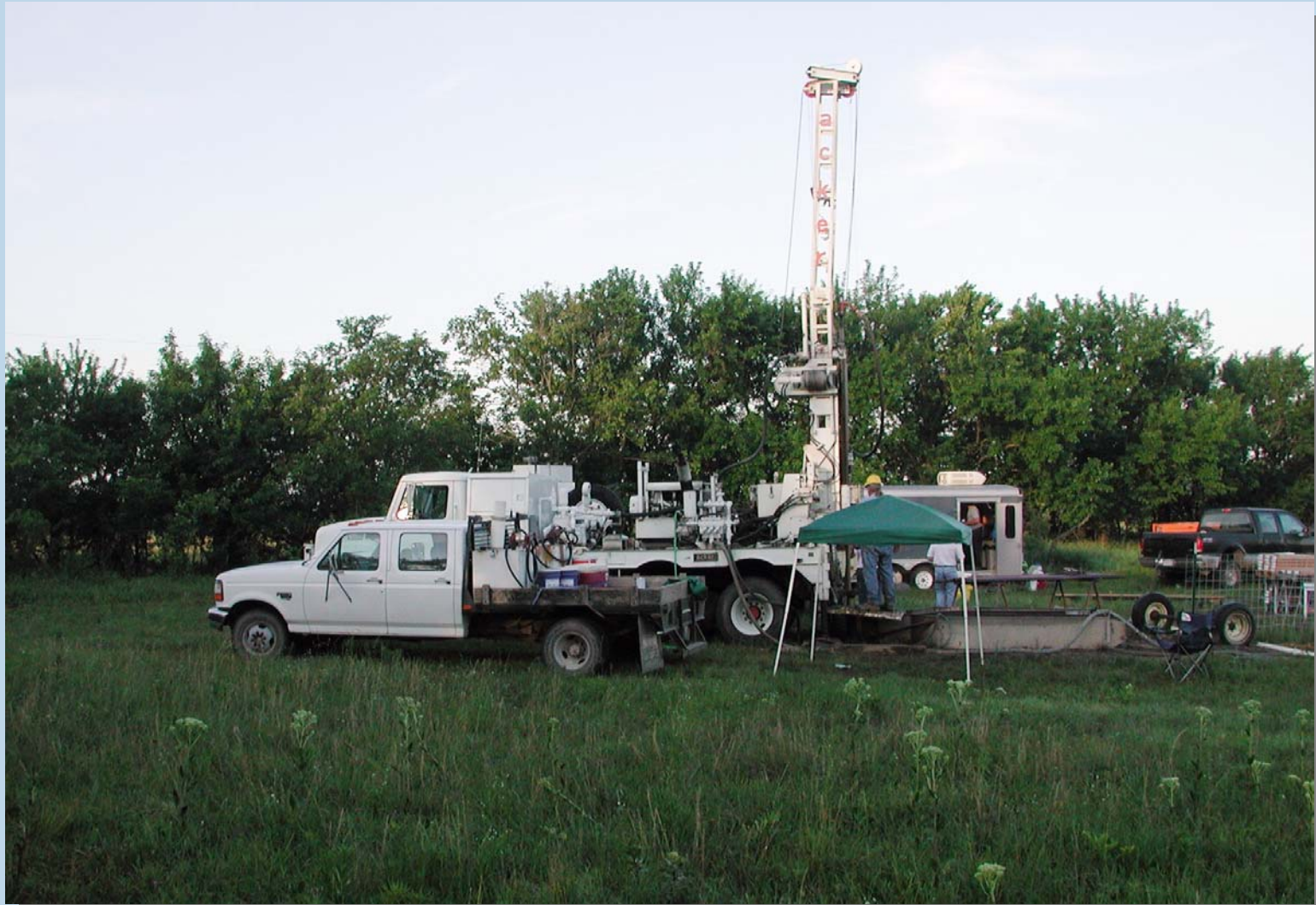
Smith and Smith, 1980

<http://www.kgs.ku.edu/PRS/publication/2002/ofr2002-47/Tulsa2002.pdf>

November 13, 2002



Coalbed Methane Program



<http://www.kgs.ku.edu/PRS/publication/2002/ofr2002-47/Tulsa2002.pdf>

November 13, 2002

Coalbed Methane Program



<http://www.kgs.ku.edu/PRS/publication/2002/ofr2002-47/Tulsa2002.pdf>

November 13, 2002

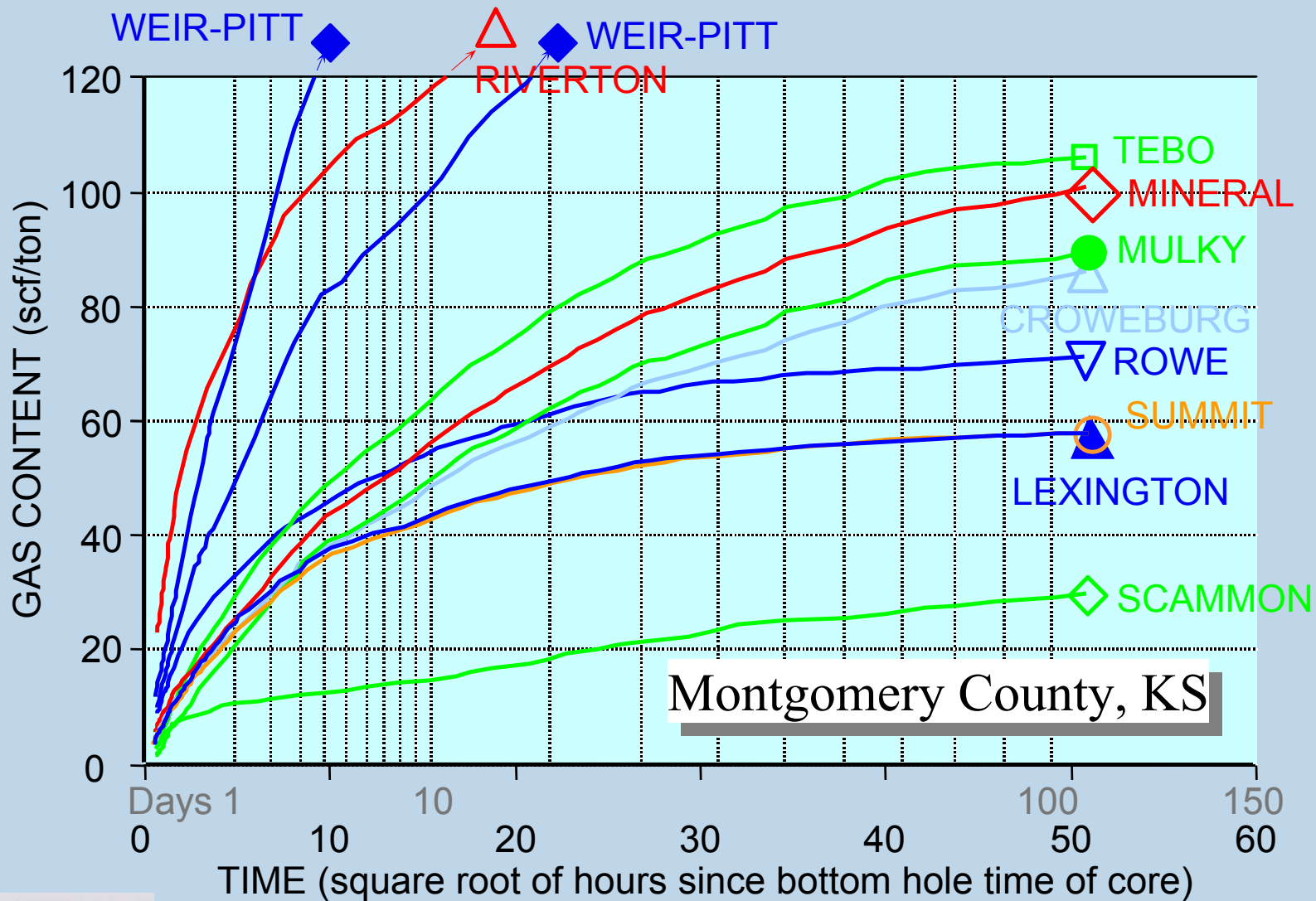
Coalbed Methane Program



<http://www.kgs.ku.edu/PRS/publication/2002/ofr2002-47/Tulsa2002.pdf>

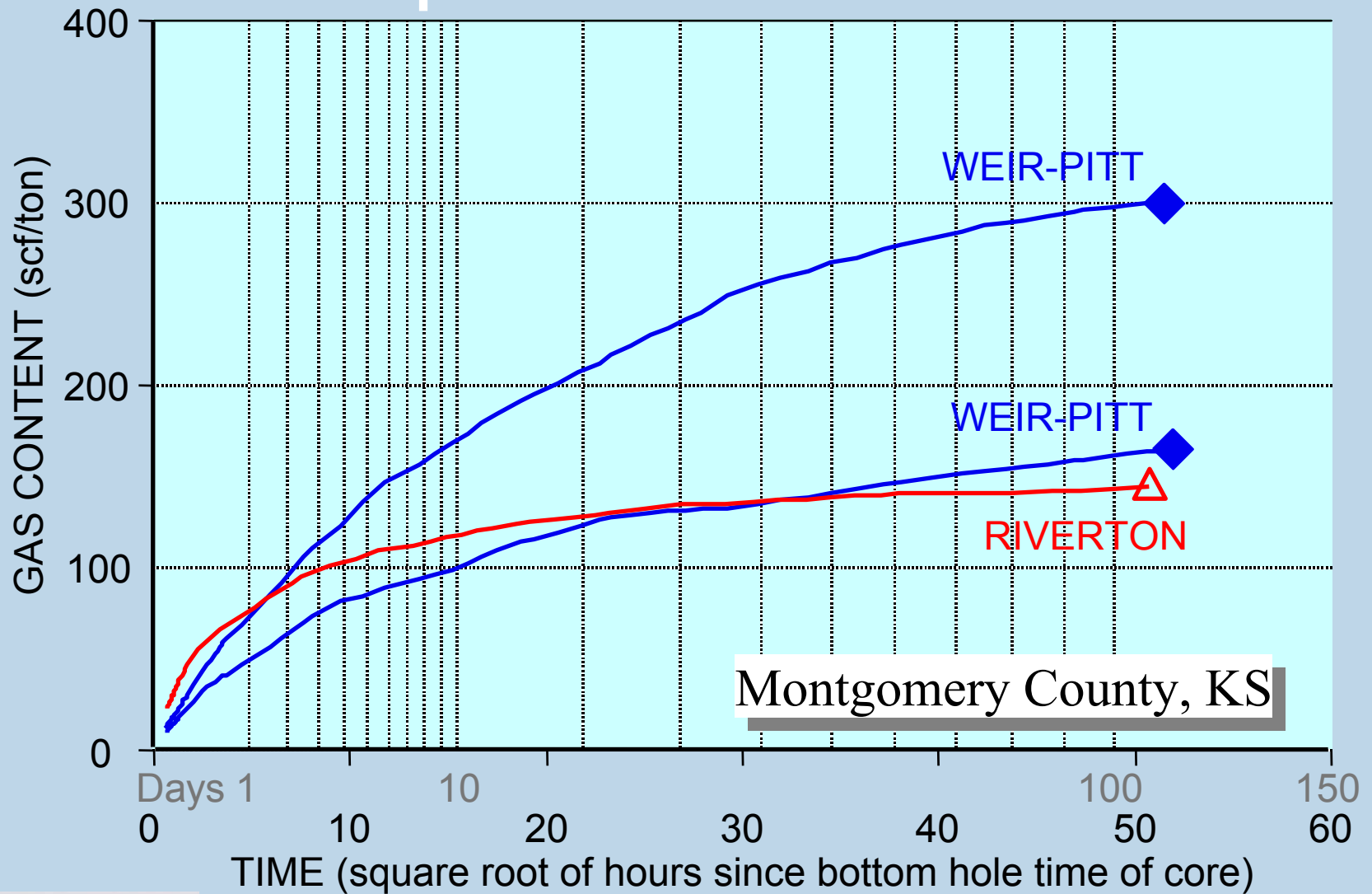
November 13, 2002

Desorption Characteristics



<http://www.kgs.ku.edu/PRS/publication/2002/ofr2002-47/Tulsa2002.pdf>

Desorption Characteristics



<http://www.kgs.ku.edu/PRS/publication/2002/ofr2002-47/Tulsa2002.pdf>

Well and Production Data

Kansas Image Viewer - Netscape

File Edit View Go Communicator Help

Oil and Gas

State of Kansas Geographic Information Systems Policy Board, Data Access and Support Center, and the Kansas Geological Survey. Please email questions and comments on the field viewer to [Jeremy Battley](mailto:Jeremy.Battley@kgs.ku.edu)

Kansas Oil and Gas Field Viewer help

Overview Map

Zoom Level: 1.5 Zoom In Zoom Out Pan
Identify Field Identify Well Full Field Extent

JEFFERSON-SYCAMORE
ARBUCKLE & BARTLESVILLE
SANDSTONE & BEVIER &
MARMATON GROUP &
RIVERTON COAL & WEIR-PITT
COAL
Produces Oil
Produces Gas
Active
Legal Field Definition

Legend
County Boundary

Table of Contents
Visible
 Current Oil & Gas Wells (JEFFERSON-SYCAMORE) [Download Wells](#)
 Current Field (JEFFERSON-SYCAMORE)
 Other Fields in Same Formation(s)
 All Fields in Area
 All Wells in Area
 PLSS
 Highways
Zoom In [Roads]
Zoom In [Rivers and Streams]
 Major Streams
 Water Bodies
 City Boundary
 County Boundary
Zoom In [View Aerials]
Zoom In [View Topo]

update map

Copyright (c) 2002 KGS 16.8mi



<http://www.kgs.ku.edu/PRS/publication/2002/ofr2002-47/Tulsa2002.pdf>

November 13, 2002

Well and Production Data

Kansas Image Viewer - Netscape

File Edit View Go Communicator Help

Oil and Gas

State of Kansas Geographic Information Systems Policy Board, Data Access and Support Center, and the Kansas Geological Survey.
Please email questions and comments on the field viewer to [Jeremy Bartley](mailto:Jeremy.Bartley@kgs.ku.edu)

Kansas Oil and Gas Field Viewer help

Overview Map

Zoom Level: 5 Zoom In Zoom Out Pan
Identify Field Identify Well | Full Field Extent

Table of Contents

Visible

- Current Oil & Gas Wells (JEFFERSON-SYCAMORE) [Download Wells](#)
- Current Field (JEFFERSON-SYCAMORE)
- Other Fields in Same Formation(s)
- All Fields in Area
- All Wells in Area
- PLSS
- Highways
- Roads
- Rivers and Streams
- Major Streams
- Water Bodies
- City Boundary
- County Boundary
- View Aerials
- View Topo

JEFFERSON-SYCAMORE
ARBUCKLE & BARTLESVILLE SANDSTONE & BEVIER & MARMATON GROUP & RIVERTON COAL & WEIR-PITT COAL
Produces Oil
Produces Gas
Active
Legal Field Definition

Legend

- PLSS
- Highways
 - Interstate
 - US Highway
 - KS Highway
- Roads
- County Boundary

Wilson
Montgomery
JEFFERSON-SYCAMORE
SYCAMORE CREEK
VALLEY EAST
NEOQUESA

Copyright (c) 2002 KGS 0 15 mi.

update map

Document: Done



<http://www.kgs.ku.edu/PRS/publication/2002/ofr2002-47/Tulsa2002.pdf>

Well and Production Data

Kansas Image Viewer - Netscape

File Edit View Go Communicator Help

Oil and Gas

State of Kansas Geographic Information Systems Policy Board, Data Access and Support Center, and the Kansas Geological Survey.
Please email questions and comments to the field viewer to [Jeremy Bartley](mailto:Jeremy.Bartley@kgs.ku.edu)

Kansas Oil and Gas Field Viewer help

Overview Map

Zoom Level: 2 Zoom In Zoom Out Pan
Identify Field Identify Well Full Field Extent

JEFFERSON-SYCAMORE
ARBUCKLE & BARTLESVILLE
SANDSTONE & BEVIER &
MARMATON GROUP &
RIVERTON COAL & WEIR-PITT
COAL
Produces Oil
Produces Gas
Active
Legal Field Definition

Legend

- PLSS
- Highways
 - Interstate
 - US Highway
 - KS Highway
- Roads
- County Boundary

Wilson

Montgomery

6600 Bv

Copyright (c) 2002 KGS

0 0.1 mi

Table of Contents

Visible

- Current Oil & Gas Wells (JEFFERSON-SYCAMORE)
[Download Wells](#)
- Current Field (JEFFERSON-SYCAMORE)
- Other Fields in Same Formation(s)
- All Fields in Area
- All Wells in Area
- PLSS
- Highways
- Roads
- Rivers and Streams
- Major Streams
- Water Bodies
- City Boundary
- County Boundary
- View Aerials
- View Topo

update map

Document: Done



<http://www.kgs.ku.edu/PRS/publication/2002/ofr2002-47/Tulsa2002.pdf>

Well and Production Data

Selected Wells - Netscape

Identify Results - Number of Records Found: 5

WELL KID	API NUMBER	LONGITUDE	LATITUDE	USPLS	STATUS	DETAIL INFO
1002955305	15-205-23837	-95.746440	37.386570	SWSESE3430S15E	GAS	WELL INFO
1002955689	15-205-24868	-95.746380	37.387390	NWSESE3430S15E	GAS	WELL INFO
1025685832	15-205-23837-0001	-95.746440	37.386570	SWSESE3430S15E	GAS	WELL INFO
1002955690	15-205-24868-0001	-95.746380	37.387390	NWSESE3430S15E	CM	WELL INFO



<http://www.kgs.ku.edu/PRS/publication/2002/ofr2002-47/Tulsa2002.pdf>

November 13, 2002

Well and Production Data

Selected Wells - Netscape KGS--Oil and Gas Wells--Specific Well--15-205-24868-0001 - Netscape

WELL KID	API NUM
1002955305	15-205-2383
1002955689	15-205-2486
1025688832	15-205-2383
1002955690	15-205-2486

KGS Oil and Gas Well Database **Specific Well--15-205-24868-0001**

Oil & Gas All Well Data

API: 15-205-24868-0001	Location: T30S R15E, Sec. 34, NW SE SE	Spud Date: 25-AUG-1992	Total Depth: 1130
Operator: GREAT EASTERN ENRGY&DEV	Field: Neodesha	Completion Date: 27-AUG-1992	Elevation: 951 GL
Lease: MUSTAIN 'A' Well 1	West, from SE corner	Plugging Date:	Formation: MISSISSIPPIAN
	Longitude: -95.74638	Status: CM	
	Latitude: 37.38739		
	County: Wilson		

Gas Production Data

[This well has been linked to a gas lease.](#)

[Kansas Geological Survey](#), Oil and Gas Well Database
Comments to webadmin@kgs.ku.edu
URL=<http://www.kgs.ku.edu/Magellan/Qualified/index.html>
Well Display Programs Updated June 10, 2002. Data added continuously.



<http://www.kgs.ku.edu/PRS/publication/2002/ofr2002-47/Tulsa2002.pdf>

Well and Production Data

Selected Wells - Nets

WELL KID	API NUM
1002955305	15-205-2383
1002955689	15-205-2486
1025688832	15-205-2383
1002955690	15-205-2486

KGS
Oil and Gas Well Databases
Oil & Gas

API: 15-205-24868-0001
Operator: GREAT EASTERN ENERGY&DEV
Field: Neodesha
Lease: MUSTAIN 'A'
Well 1

Gas Production Data

[Kansas Geological Survey,](http://www.kgs.ku.edu)
Comments to webadmin@kgs.ku.edu
URL=<http://www.kgs.ku.edu>
Well Display Programs Upd

KGS--Oil and Gas Wells--Spe **KGS--Oil and Gas Leases--Yearly and monthly production - Netscape**

Yearly and monthly production **Save Monthly Data to File**

MUSTAIN Lease

Operator: GREAT EASTERN ENERGY
Location: T30S, R15E, Sec. 34
KS Dept. of Revenue Lease Code: 216793
Field: [Neodesha](#)
Well Data:

T30S R15E, Sec. 34, NW SE SE Lease: MUSTAIN 'A' 1 Operator: GREAT EASTERN ENRGY&DEV 15-205-24868	T30S R15E, Sec. 34, NE NW SE Lease: MUSTAIN 2 Operator: GREAT EASTERN ENRGY&DEV 15-205-24883
T30S R15E, Sec. 34, NW SE SE Lease: MUSTAIN 'A' 1 Operator: GREAT EASTERN ENRGY&DEV 15-205-24868-0001	T30S R15E, Sec. 34, SW SE SE Lease: MUSTAIN 1 Operator: GREAT EASTERN ENRGY&DEV 15-205-23837-0001

Annual Gas Production, (mcf) **Monthly Gas Production, (mcf)**
(from 1997)

Year	Production	Wells	Cumulative
1990	99	1	99
1991	17,255	1	17,354
1992	14,673	1	32,027
1993	12,765	1	44,792
1994	11,598	1	56,390
1995	8,550	1	64,940
1996	8,019	3	72,959
1997	6,397	3	79,356
1998	6,856	3	86,212
1999	6,409	3	92,621
2000	3,660	3	96,281
2001	4,653	3	100,934
2002	1,020	3	101,954

*2002 data incomplete at this time.
2000-2001 data may still change.

Year	Month	Production	Wells
1997	1	369	3
1997	2	360	3
1997	4	726	3
1997	5	707	3
1997	6	665	3
1997	7	623	3
1997	8	547	3
1997	9	489	3
1997	10	632	3
1997	11	606	3
1997	12	673	3
1998	1	769	3
1998	2	565	3
1998	3	685	3
1998	4	581	3



<http://www.kgs.ku.edu/PRS/publication/2002/ofr2002-47/Tulsa2002.pdf>

Well and Production Data

Selected Wells - Nets

WELL KID	API NUM
1002955305	15-205-2383
1002955689	15-205-2486
1025688832	15-205-2383
1002955690	15-205-2486

KGS Oil & Gas Wells--Spe

KGS
Oil & Gas
Oil and Gas Well Databases

API: 15-205-24868-0001
Operator: GREAT EAST ENRGY&DEV
Field: Neodesha
Lease: MUSTAIN 'A' Well 1

KGS--Oil and Gas Leases--Yearly and monthly p

Kansas Geological Survey **Oil and Gas** **Lease Oil & Gas Production**

Operator: GREAT EASTERN ENERGY
Location: T30S, R15E, Sec. 34
KS Dept. of Revenue Lease Code: 21679:
Field: [Neodesha](#)
Well Data:
[T30S R15E, Sec. 34, NW SE SE](#)
Lease: MUSTAIN 'A' 1
Operator: GREAT EASTERN ENRG 15-205-24868
[T30S R15E, Sec. 34, NW SE SE](#)
Lease: MUSTAIN 'A' 1
Operator: GREAT EASTERN ENRG 15-205-24868-0001

Annual Gas Production, (mc

Year	Production	Wells	Cumulative
1990	99	1	99
1991	17,255	1	17,354
1992	14,673	1	32,027
1993	12,765	1	44,792
1994	11,598	1	56,390
1995	8,550	1	64,940
1996	8,019	3	72,959
1997	6,397	3	79,356
1998	6,856	3	86,212
1999	6,409	3	92,621
2000	3,660	3	96,281
2001	4,653	3	100,934
2002	1,020	3	101,954

[View Charts](#)

Gas Production Data

[Kansas Geological Survey,](#)
Comments to webadmin@kgs.ku.edu
URL=<http://www.kgs.ku.edu>
Well Display Programs Upd

Netscape

KGS--Oil and Gas Production Chart

MUSTAIN Lease

Cum. gas prod., MUSTAIN (mcf)

Ann. gas prod., MUSTAIN (mcf)

*2002 data incomplete at this time.
2000-2001 data may still change.



<http://www.kgs.ku.edu/PRS/publication/2002/ofr2002-47/Tulsa2002.pdf>

Coalbed Methane Program

- Understand Activity and Provide Online Access to Data and Information
- Understand Coal Distribution within a Regional Geologic Setting
- Understand Coal Distribution within a Depositional Setting
- Understand Coal Quality



<http://www.kgs.ku.edu/PRS/publication/2002/ofr2002-47/Tulsa2002.pdf>