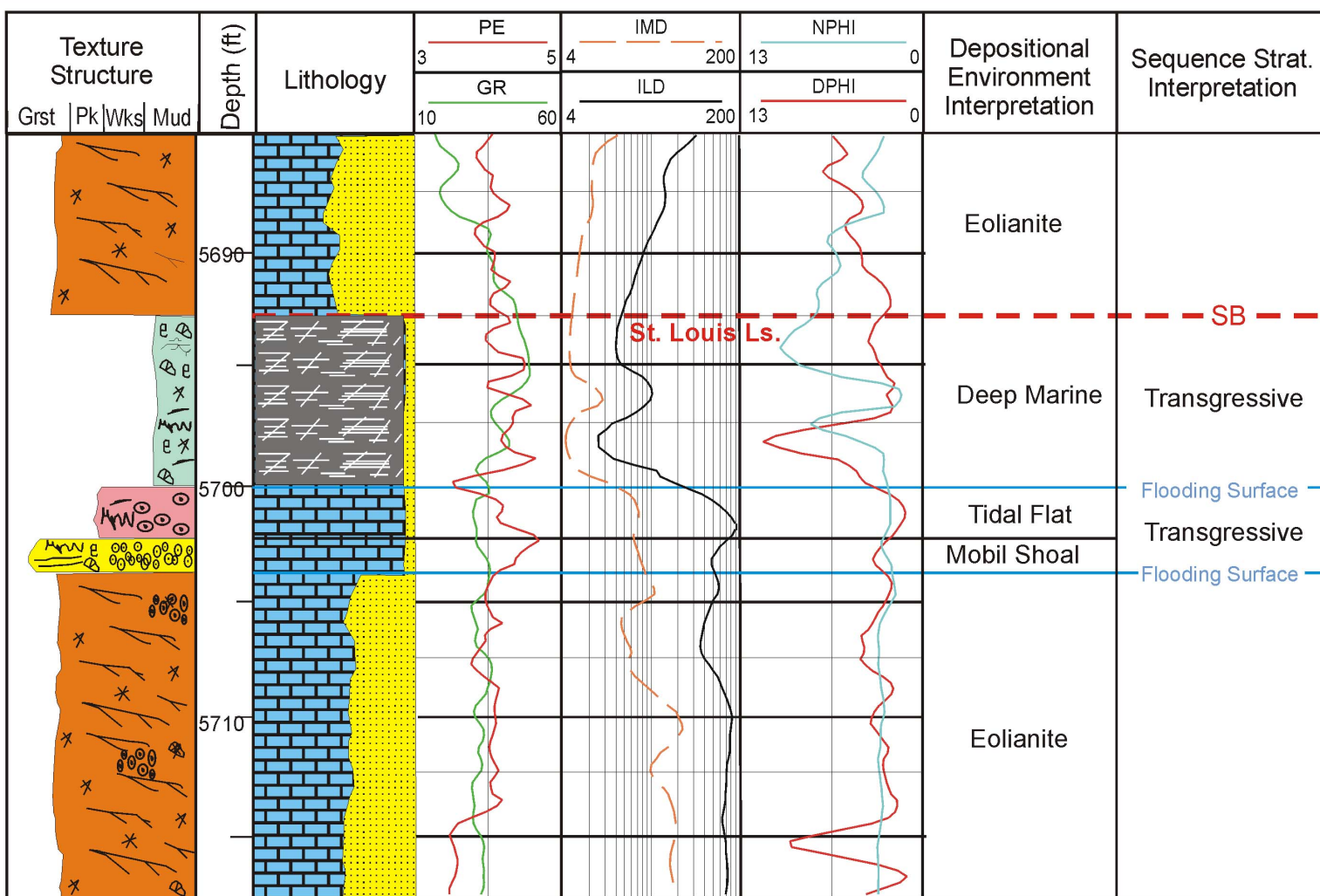


RLF 1-29, 15-187-20746



Quartz-rich carbonate grainstone

Peloidal grainstone / pckstone

Skeletal fragments

Stylolites

Ooid grain

Argillaceous Limestone

Ooid skeletal grainstone

Fenestral fabric

Translatent stratification

Peloid grain

Flooding surface

Unit boundary

Cross bedding

Sequence boundary