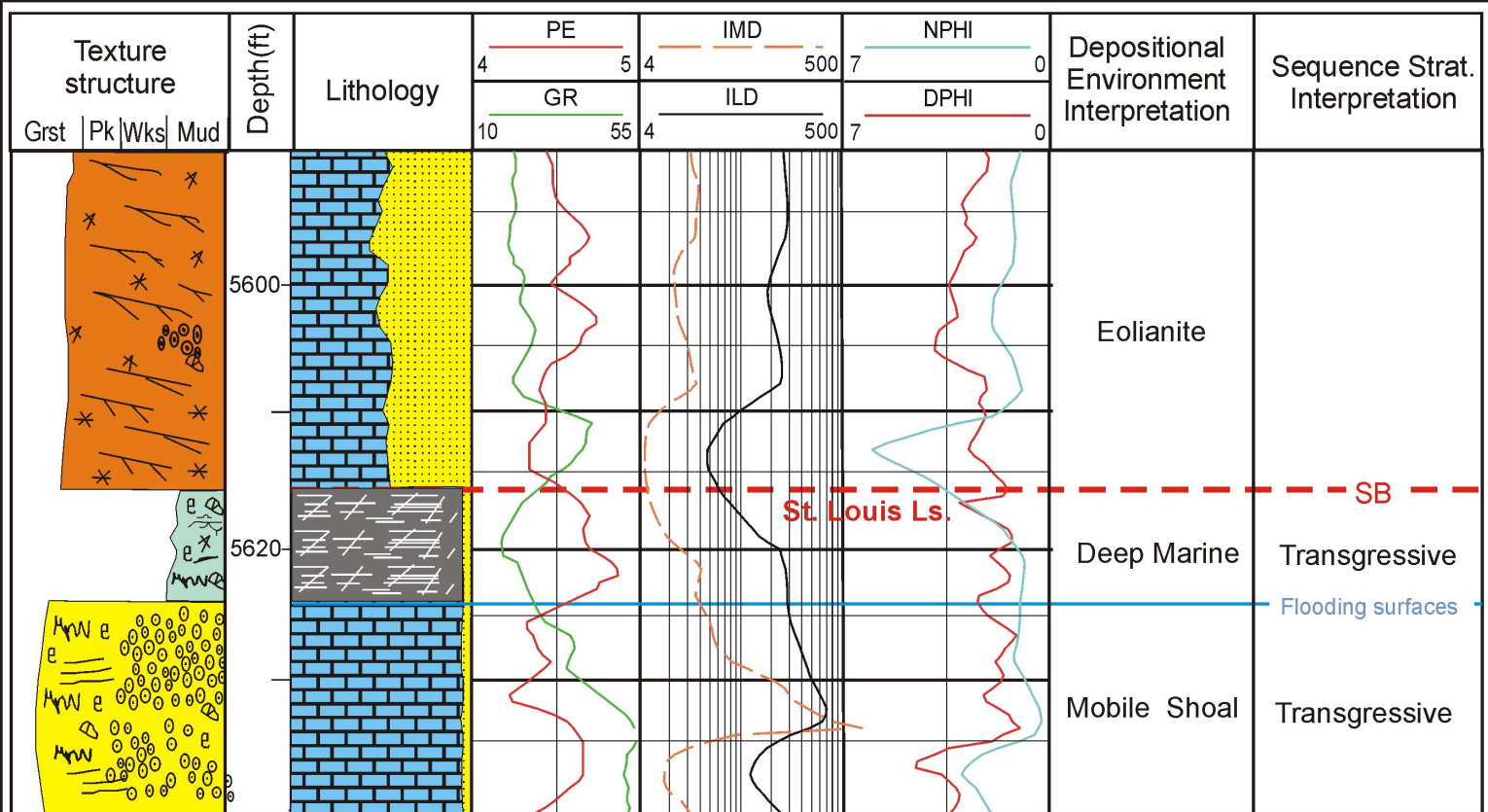


# Tamara Sue 26-1, 15-187-20803



St. Louis Ls.

SB

Flooding surfaces

- Quartz-rich carbonate grainstone
- Argillaceous Limestone
- Ooid skeletal grainstone

- Skeletal fragments
- Fenestral fabric
- Cross bedding

- Stylolites
- Translatent stratification
- Sequence boundary

- Ooid grain
- Peloid grain
- Unit boundary

- Flooding surface