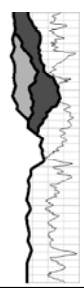


Plot File: xFinal_KGS_DepthPlot_Phase1.PLT
 Well File: Wash_WildRose1.las
 Time: 01:12 PM
 Date: Wed, Jul 30, 2008
 Log analyst: Stetani Whitaker



Company: Wash_WildRose1.las
 File: Wild Rose
 County: Sweetwater State: Wyoming Country: USA
 Location: N/A
 Sect: N/A
 Well: N/A
 Field: N/A
 County: N/A
 State: N/A
 Country: N/A

Permanent datum: GROUND LEVEL @ 6728 ft F
 Log measured from: Kelly Bushing 15 ft above perm datum
 Drift measured from: Kelly Bushing

Date	Run No.	ONE	TWO	N/A	N/A
Depth Driller	9615	10323	10318	N/A	N/A
Depth Logger	9620	10318	10309	N/A	N/A
Bottom Logged Interval	9608	10309	N/A	N/A	N/A
Top Logged Interval	1212	9600	N/A	N/A	N/A
Casing Driller	1175 @ 1216	8625 @ 9615	N/A @ N/A	N/A	N/A
Casing Logger	1212	9600	N/A	N/A	N/A
Ball Size	10625	7875	N/A	N/A	N/A
Type Fluid in Hole	Cylind	WBM	N/A	N/A	N/A
Density	9.5	11.4	53	N/A	N/A
Viscosity	40	1.4	53	N/A	N/A
pH	7.8	9.50000	2.2	N/A	N/A
Source of Sample	Flowline	Flowline	N/A	N/A	N/A
Run @ Meas. Temp.	216 @ 58	124 @ 57	N/A @ N/A	N/A	N/A
Run @ Meas. Temp.	179 @ 50	114 @ 58	N/A @ N/A	N/A	N/A
Run @ Meas. Temp.	274 @ 50	265 @ 60	N/A @ N/A	N/A	N/A
Source: Rmt	Measured	Measured	N/A	N/A	N/A
Run @ BHT	0753 @ 179	0361 @ 212	N/A @ N/A	N/A	N/A
Run @ BHT	1700	1500	N/A	N/A	N/A
Tool Last on Bottom	0900	2050	N/A	N/A	N/A
Max. Rec. Temp.	179	212	N/A	N/A	N/A
Equipment Location	Casper	Rock Springs	N/A	N/A	N/A
Recorded By	N/A	Federico Boreto	N/A	N/A	N/A
Witnessed By	N/A	N/A	N/A	N/A	N/A

Disclaimer: Interpretations from electrical or other measurements in wellbores are opinions based upon inferences as to tool response in the underground formation. The Discovery Group Inc. cannot and does not guarantee the accuracy or correctness of any interpretations made using the LESA for Windows software. Consequently, The Discovery Group Inc. shall not be liable or responsible for any loss or damages incurred as a result.

DIGITAL FORMATION
 LESA for Windows 7.1.1

