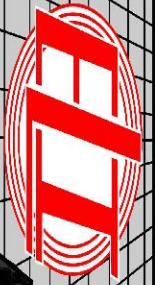


MICRO LOG



Company NEC OPERATING - KANSAS, LLC.  
 Well BUSHWHACKER #1  
 Field GRIGSTON NORTHEAST  
 County SCOTT  
 State KANSAS

Company NEC OPERATING - KANSAS, LLC.  
 Well BUSHWHACKER #1  
 Field GRIGSTON NORTHEAST  
 County SCOTT State KANSAS

Location: API #: 15-171-21317-0000  
 330' FNL & 1400' FEL  
 E/2 - NE - NW - NE  
 SEC 2 TWP 19S RGE 31W  
 Permanent Datum GROUND LEVEL Elevation 2926  
 Log Measured From KELLY BUSHING 11' A.G.L.  
 Drilling Measured From KELLY BUSHING  
 Other Services CDL/CNL/PE DIL  
 Elevation K.B. 2937  
 D.F. 2935  
 G.L. 2926

Date	3/2/24		
Run Number	TWO		
Depth Driller	4700		
Depth Logger	4700		
Bottom Logged Interval	4698		
Top Log Interval	3500		
Casing Driller	8.675@352		
Casing Logger	352		
Bit Size	7.785		
Type Fluid in Hole	CHEMICAL MUD	CHLORIDES 1,400 PPM	
Density / Viscosity	9.2/60		
pH / Fluid Loss	11.0/7.2		
Source of Sample	FLOWLINE		
Rm @ Meas. Temp	1.50@61F		
Rmf @ Meas. Temp	1.13@61F		
Rmc @ Meas. Temp	1.80@61F		
Source of Rmf / Rmc	MEASUREMENT		
Rm @ BHT	.750@122F		
Time Circulation Stopped	3.5 HOURS		
Time Logger on Bottom	7.45 A.M.		
Maximum Recorded Temperature	122F		
Equipment Number	922339		
Location	HAYS, KANSAS		
Recorded By	JEFF LUEBBERS	JEREMEY PASEK	
Witnessed By	KEATON JONES		

<<< Fold Here >>>

All interpretations are opinions based on inferences from electrical or other measurements and we cannot and do not guarantee the accuracy or correctness of any interpretation, and we shall not, except in the case of gross or willful negligence on our part, be liable or responsible for any loss, costs, damages, or expenses incurred or sustained by anyone resulting from any interpretation made by any of our officers, agents or employees. These interpretations are also subject to our general terms and conditions set out in our current Price Schedule.

15-171-21317-0000 Comments

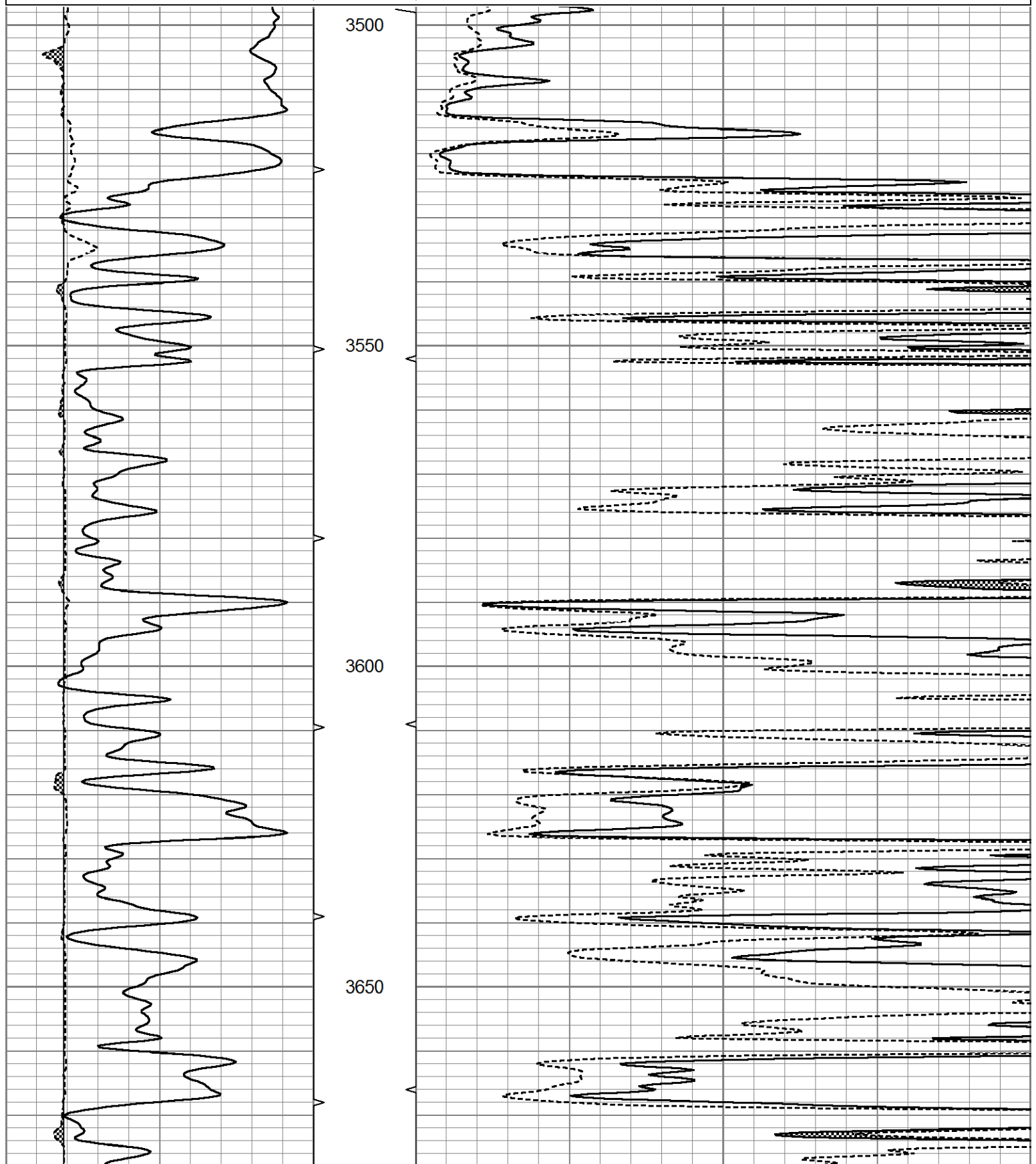
THANK YOU FOR USING ELI WIRELINE HAYS. KANSAS (785) 628-6395  
 DIRECTIONS  
 GRIGSTON, KS., W. ON HWY 96 TO "VENISON RD.", 3S., 3/4E., S. INTO

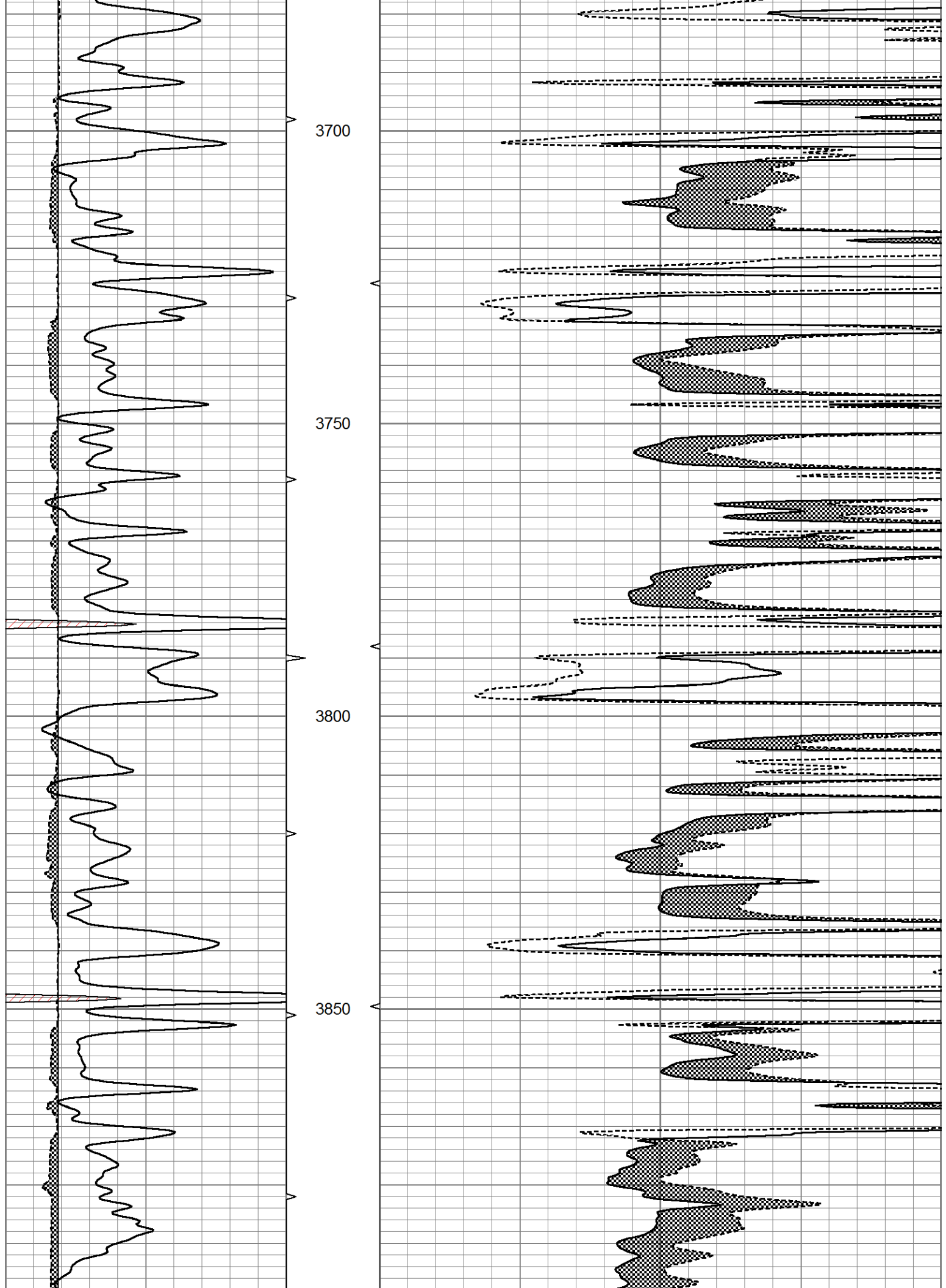


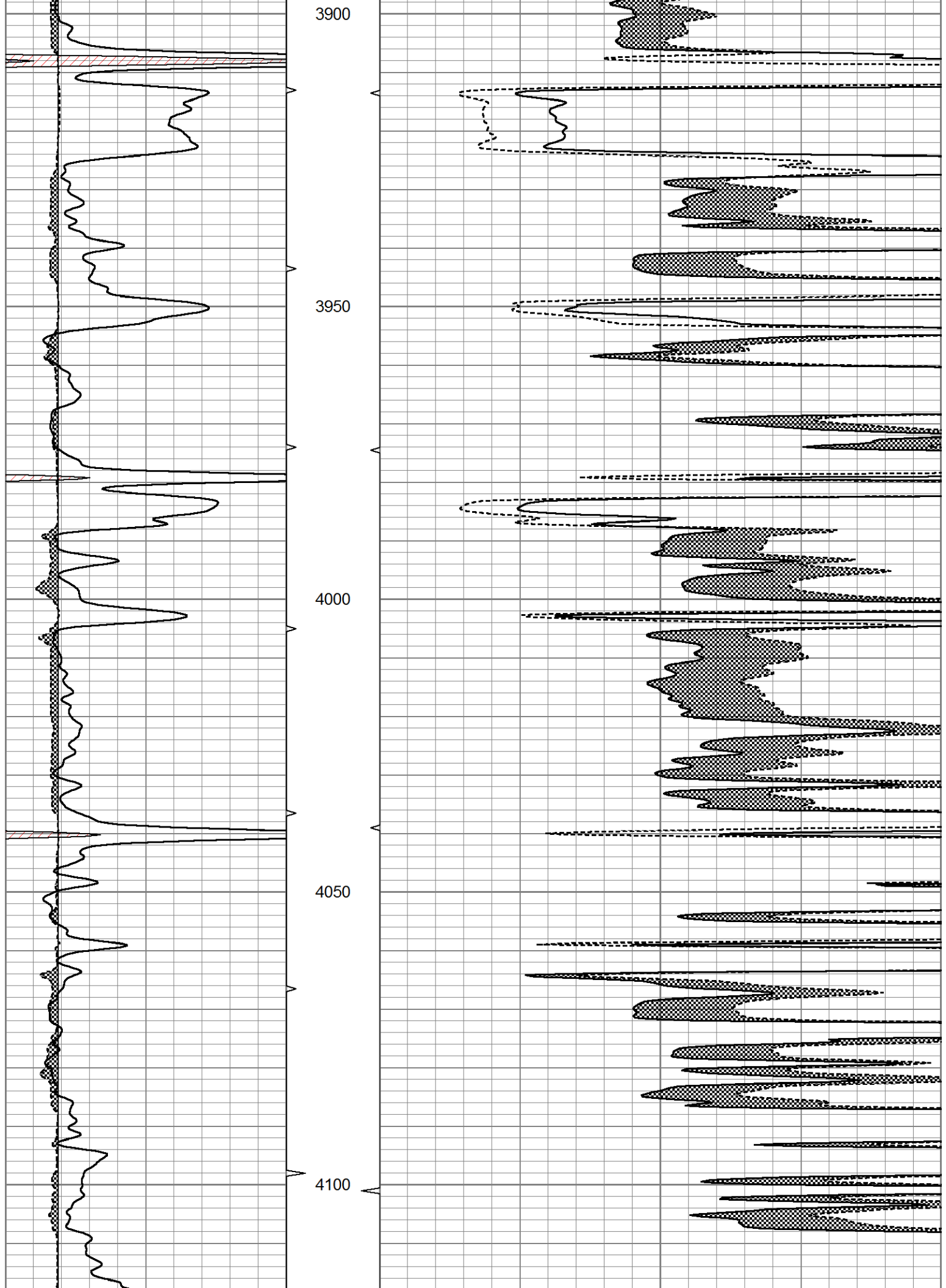
MAIN SECTION

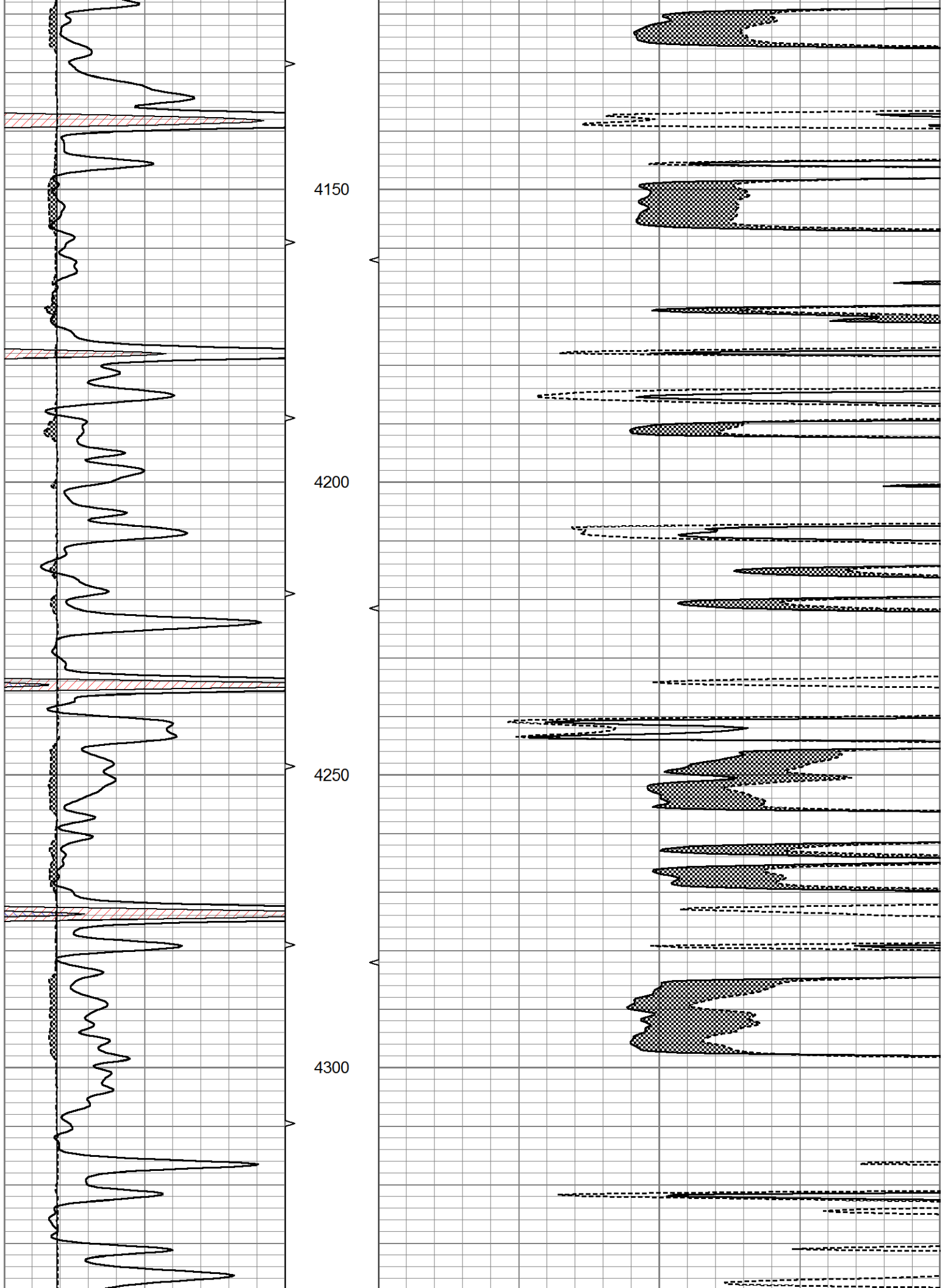
Database File 8417pe.db  
 Dataset Pathname pass7.4  
 Presentation Format micro  
 Dataset Creation Sat Mar 02 08:46:50 2024  
 Charted by Depth in Feet scaled 1:240

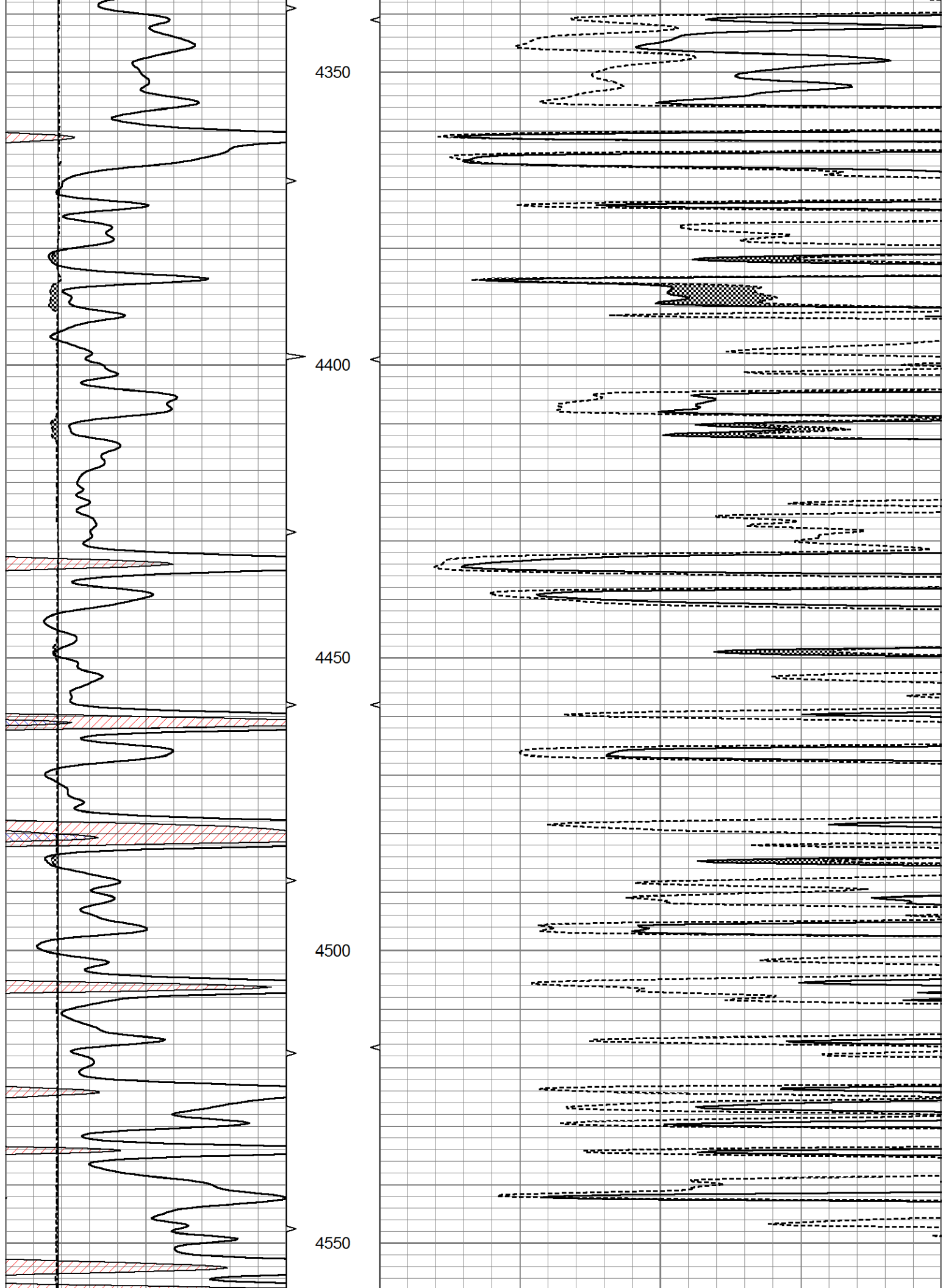
0	GR (GAPI)	150	ABHV	0	MEL20 (Ohm-m)	40
6	MELCAL (in)	16	10 (ft3)	0	MEL15 (Ohm-m)	40
			ABHV			
			0 (ft3)	10		

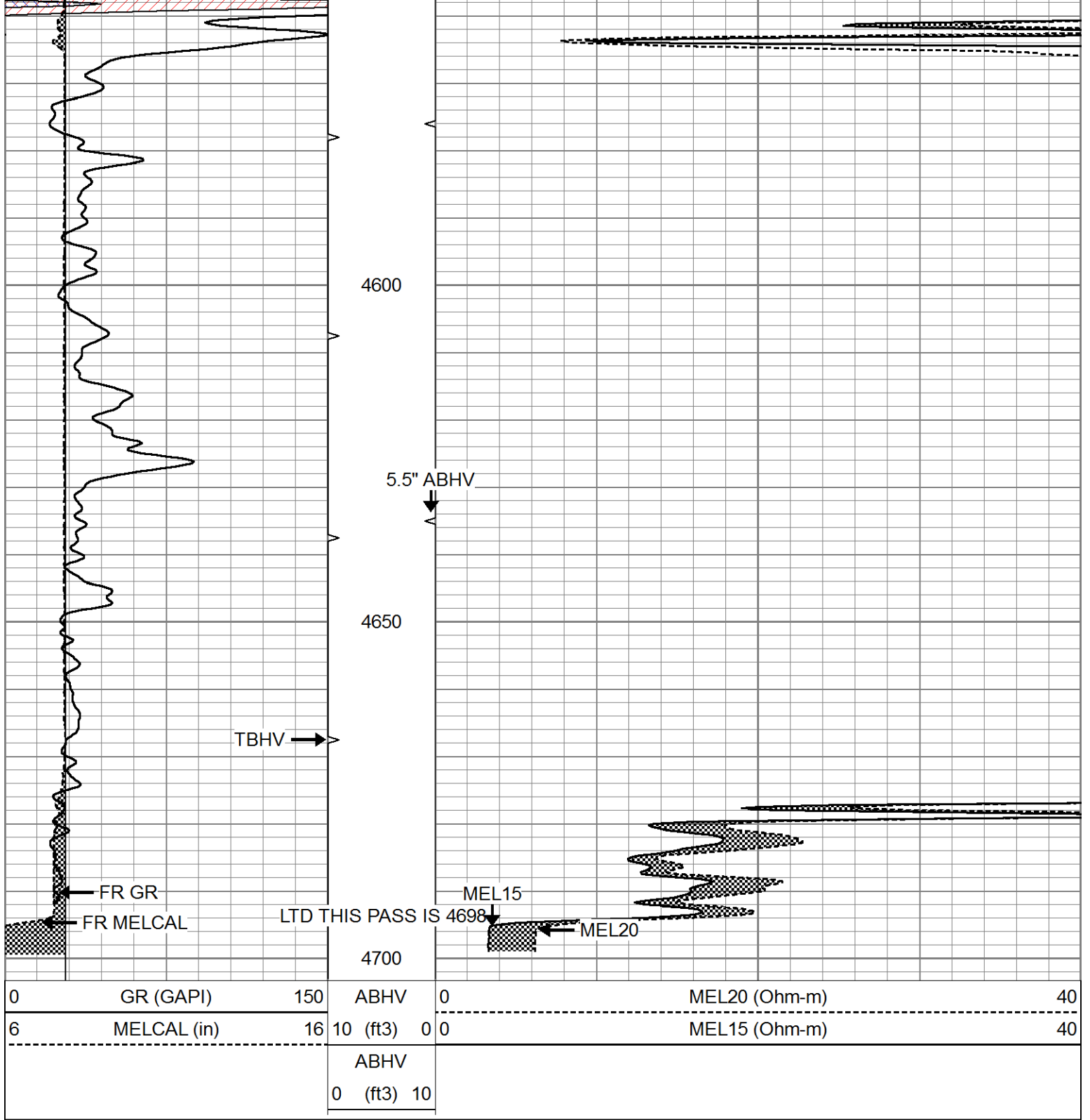








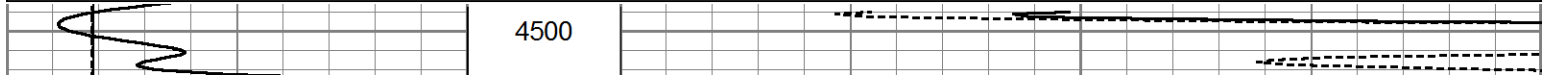


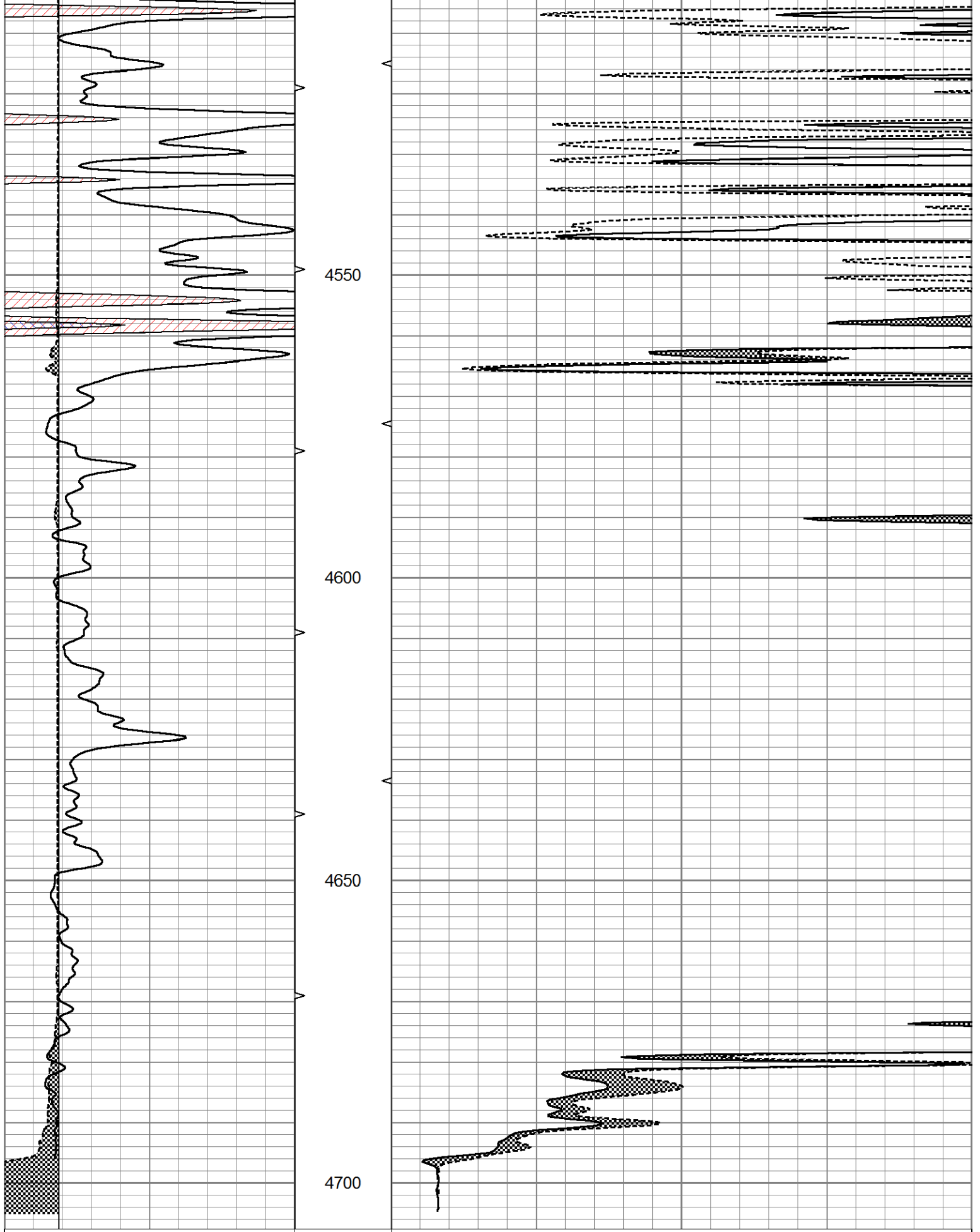


Database File	8417pe.db
Dataset Pathname	pass6.4
Presentation Format	micro
Dataset Creation	Sat Mar 02 08:49:24 2024
Charted by	Depth in Feet scaled 1:240

0	GR (GAPI)	150	ABHV	0	MEL20 (Ohm-m)	40
6	MELCAL (in)	16	10 (ft3)	0 0	MEL15 (Ohm-m)	40
			ABHV			
			0 (ft3)	10		





0	GR (GAPI)	150	ABHV	0	MEL20 (Ohm-m)	40
6	MELCAL (in)	16	10 (ft3)	0 0	MEL15 (Ohm-m)	40

			ABHV			
			0 (ft3)	10		



Calibration Report

Database File 8417pe.db  
 Dataset Pathname pass7.4  
 Dataset Creation Sat Mar 02 08:46:50 2024

MICRO Calibration Report

Serial Number: 070910  
 Tool Model: ProbeN  
 Performed: Sat Mar 02 08:42:52 2024

Caliper Calibration: Gain=3.509 Offset=1.965  
 References Low Cal High Cal  
 8.000 16.000  
 Readings 1.720 4.000

1.5" Calibration: Gain=60.000 Offset=-3.500  
 References Low Cal High Cal  
 0.000 20.000  
 Readings 0.000 1.216

2" Calibration: Gain=62.000 Offset=-2.500  
 References Low Cal High Cal  
 0.000 20.000  
 Readings 0.002 1.053

Gamma Ray Calibration Report

Serial Number: 070559  
 Tool Model: OPEN\_GR  
 Performed: Fri Mar 01 22:17:25 2024

Calibrator Value: 1.0 GAPI

Background Reading: 0.0 cps  
 Calibrator Reading: 1.0 cps

Sensitivity: 0.3000 GAPI/cps