

**BOREHOLE PROFILE
LOG
5.5" CASING**

Company NEC OPERATING - KANSAS, LLC.
Well BUSHWHACKER #1
Field GRIGSTON NORTHEAST
County SCOTT
State KANSAS

Company NEC OPERATING - KANSAS, LLC.
Well BUSHWHACKER #1
Field GRIGSTON NORTHEAST
County SCOTT State KANSAS

Location: API #: 15-171-21317-0000
330' FNL & 1400' FEL
E/2 - NE - NW - NE
SEC 2 TWP 19S RGE 31W
Permanent Datum GROUND LEVEL Elevation 2926
Log Measured From KELLY BUSHING 11' A.G.L.
Drilling Measured From KELLY BUSHING

Other Services
CDL/CNL/PE
DIL/MEL
Elevation
K.B. 2937
D.F. 2935
G.L. 2926

Date	3/2/24
Run Number	ONE
Depth Driller	4700
Depth Logger	4700
Bottom Logged Interval	4698
Top Log Interval	3500
Casing Driller	8.675@352
Casing Logger	352
Bit Size	7.785
Type Fluid in Hole	CHEMICAL MUD
Density / Viscosity	9.2/60
pH / Fluid Loss	11.0/7.2
Source of Sample	FLOWLINE
Rm @ Meas. Temp	1.50@61F
Rmf @ Meas. Temp	1.13@61F
Rmc @ Meas. Temp	1.80@61F
Source of Rmf / Rmc	MEASUREMENT
Rm @ BHT	.750@122F
Time Circulation Stopped	2 HOURS
Time Logger on Bottom	5.45 A.M.
Maximum Recorded Temperature	122F
Equipment Number	922339
Location	HAYS, KANSAS
Recorded By	JEFF LUEBBERS
Witnessed By	KEATON JONES
	JEREMY PASEK

<<< Fold Here >>>

All interpretations are opinions based on inferences from electrical or other measurements and we cannot and do not guarantee the accuracy or correctness of any interpretation, and we shall not, except in the case of gross or willful negligence on our part, be liable or responsible for any loss, costs, damages, or expenses incurred or sustained by anyone resulting from any interpretation made by any of our officers, agents or employees. These interpretations are also subject to our general terms and conditions set out in our current Price Schedule.

15-171-21317-0000 Comments

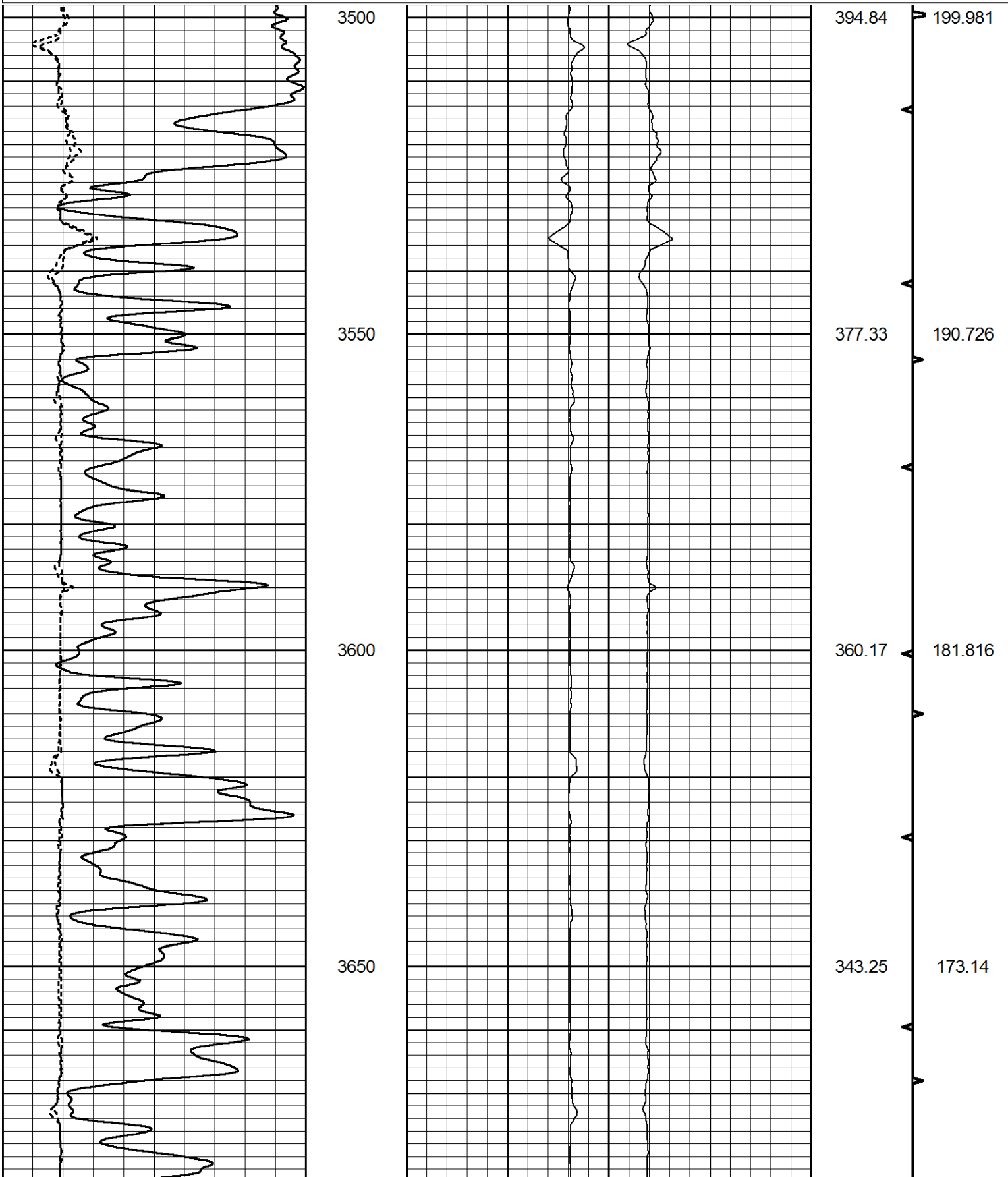
THANK YOU FOR USING ELI WIRELINE HAYS. KANSAS (785) 628-6395
DIRECTIONS
GRIGSTON, KS., W. ON HWY 96 TO "VENISON RD.", 3S., 3/4E., S. INTO

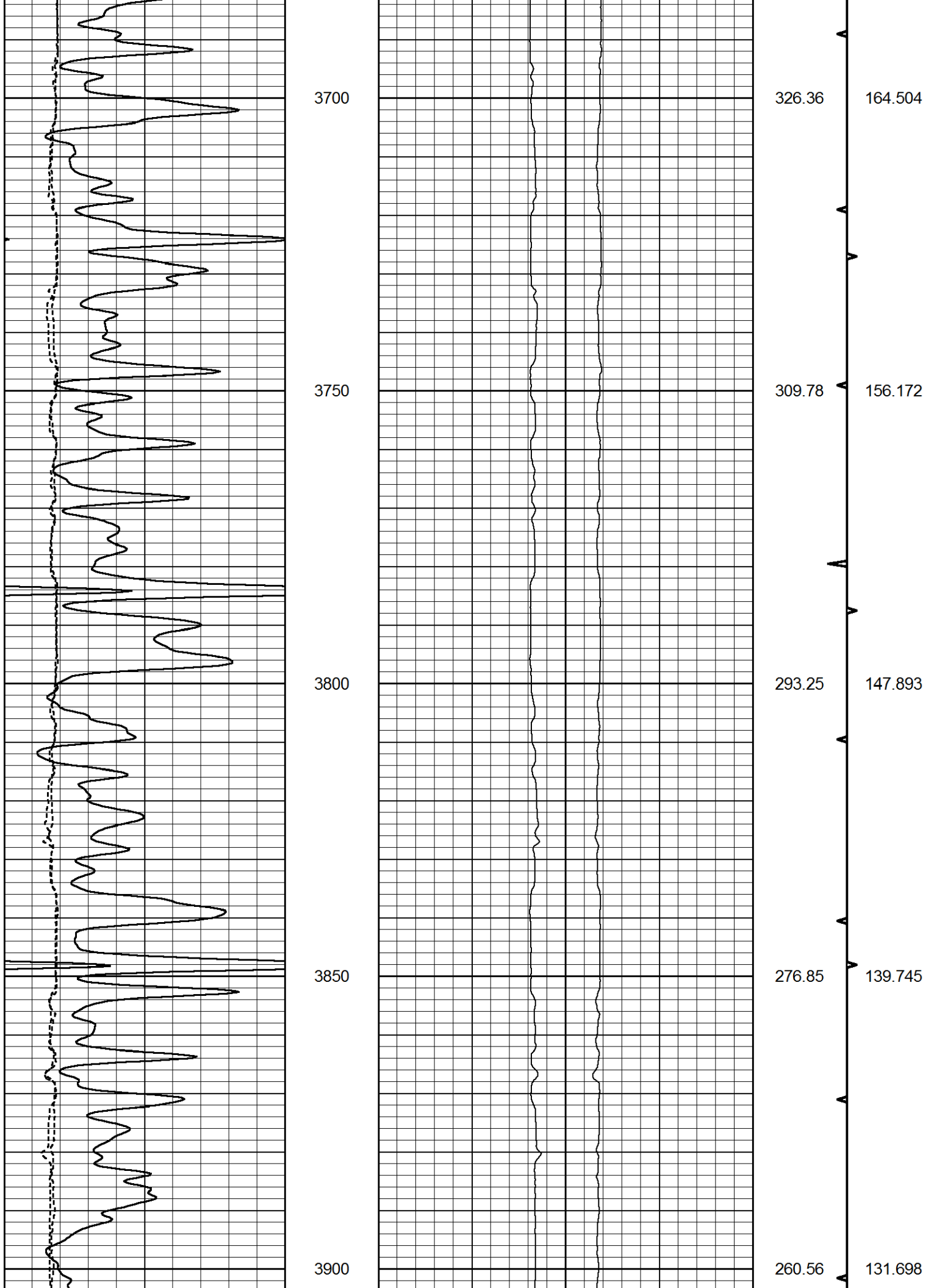


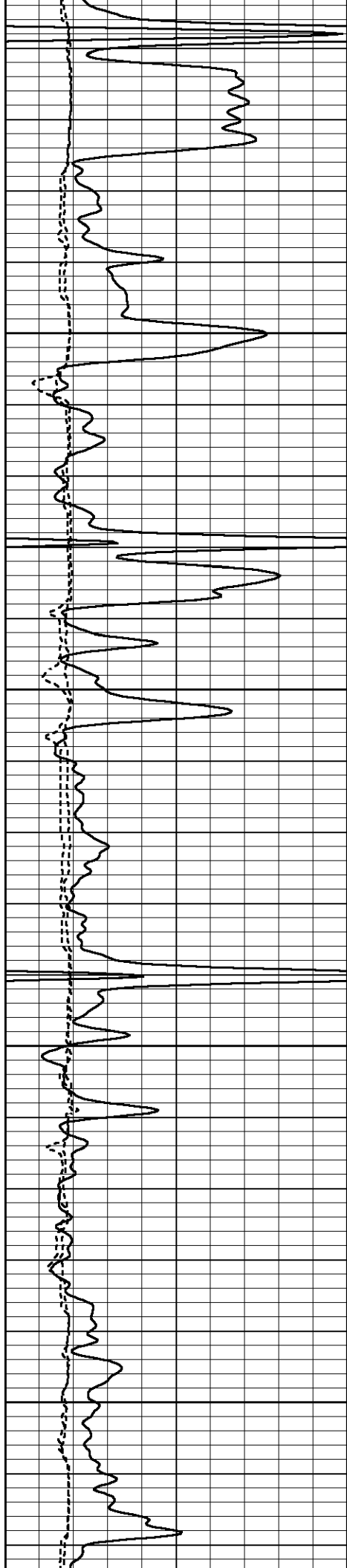
MAIN SECTION

Database File 8417pe.db
 Dataset Pathname pass4.1L
 Presentation Format obrbore
 Dataset Creation Sat Mar 02 08:52:04 2024
 Charted by Depth in Feet scaled 1:240

0	GR (GAPI)	150	LEFT CALIPER			RIGHT CALIPER			BVTX (ft3)	AVTX (ft3)
6	DCAL (in)	16	16	(in)	6	6	(in)	16	TBHV (ft3)	ABHV (ft3)
6	MELCAL (in)	16								





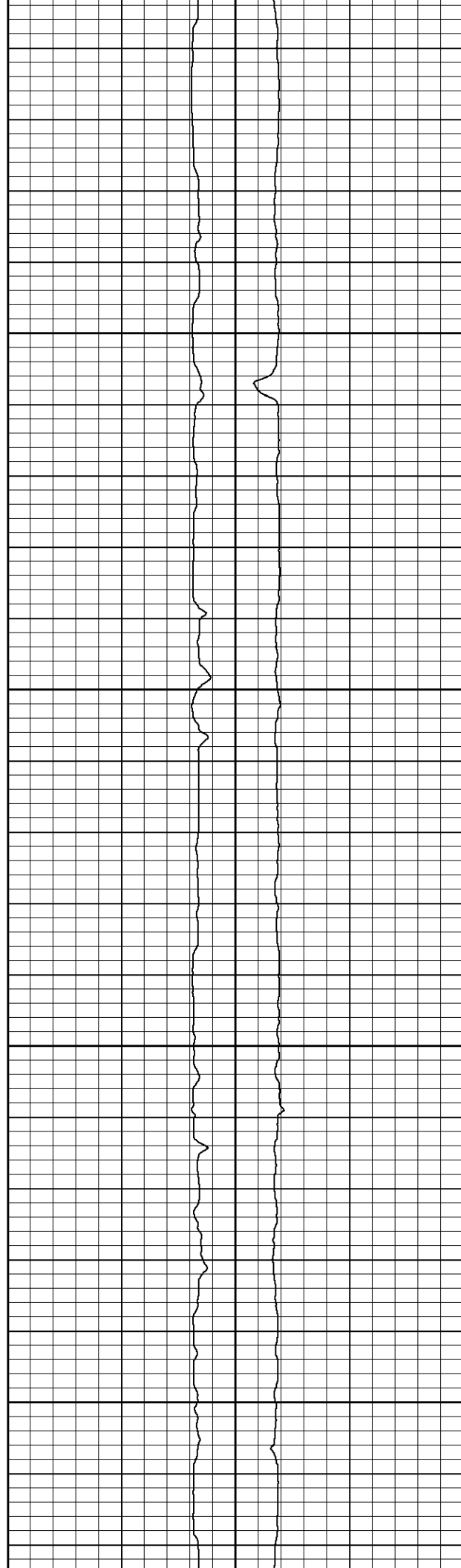


3950

4000

4050

4100



243.93

227.30

210.49

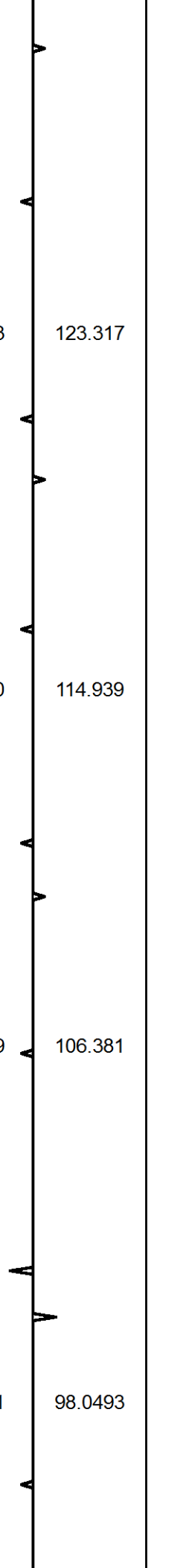
193.91

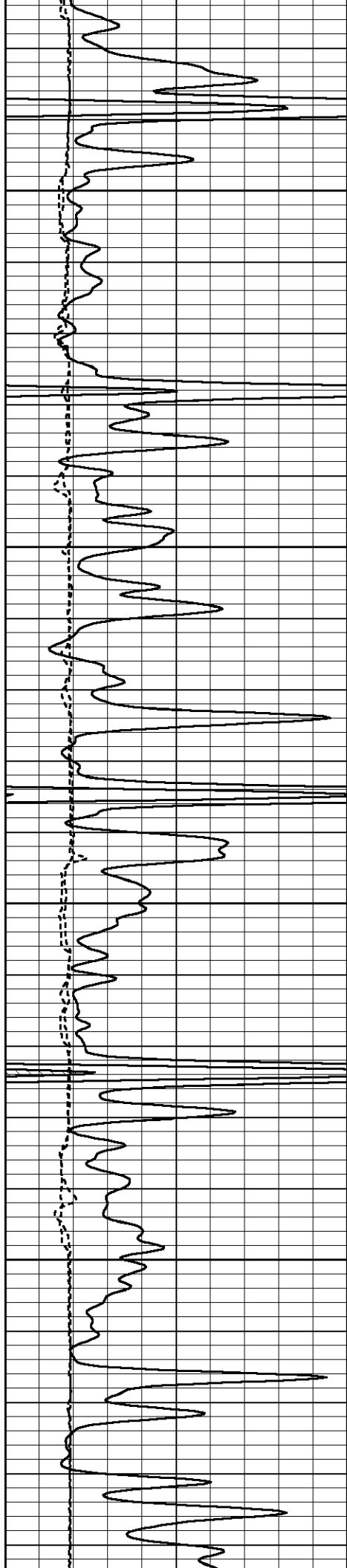
123.317

114.939

106.381

98.0493





4150

4200

4250

4300

177.24

160.75

143.71

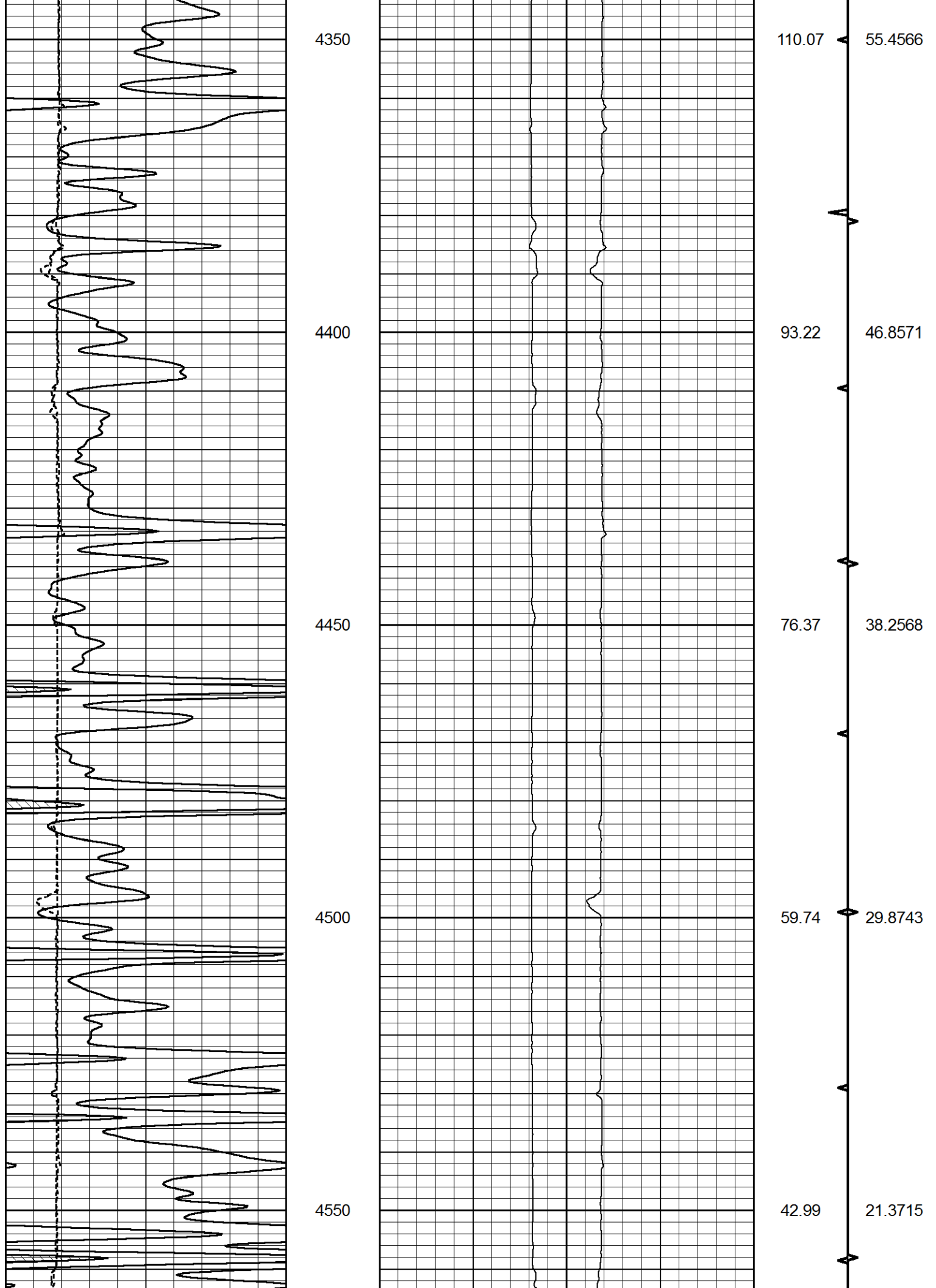
127.09

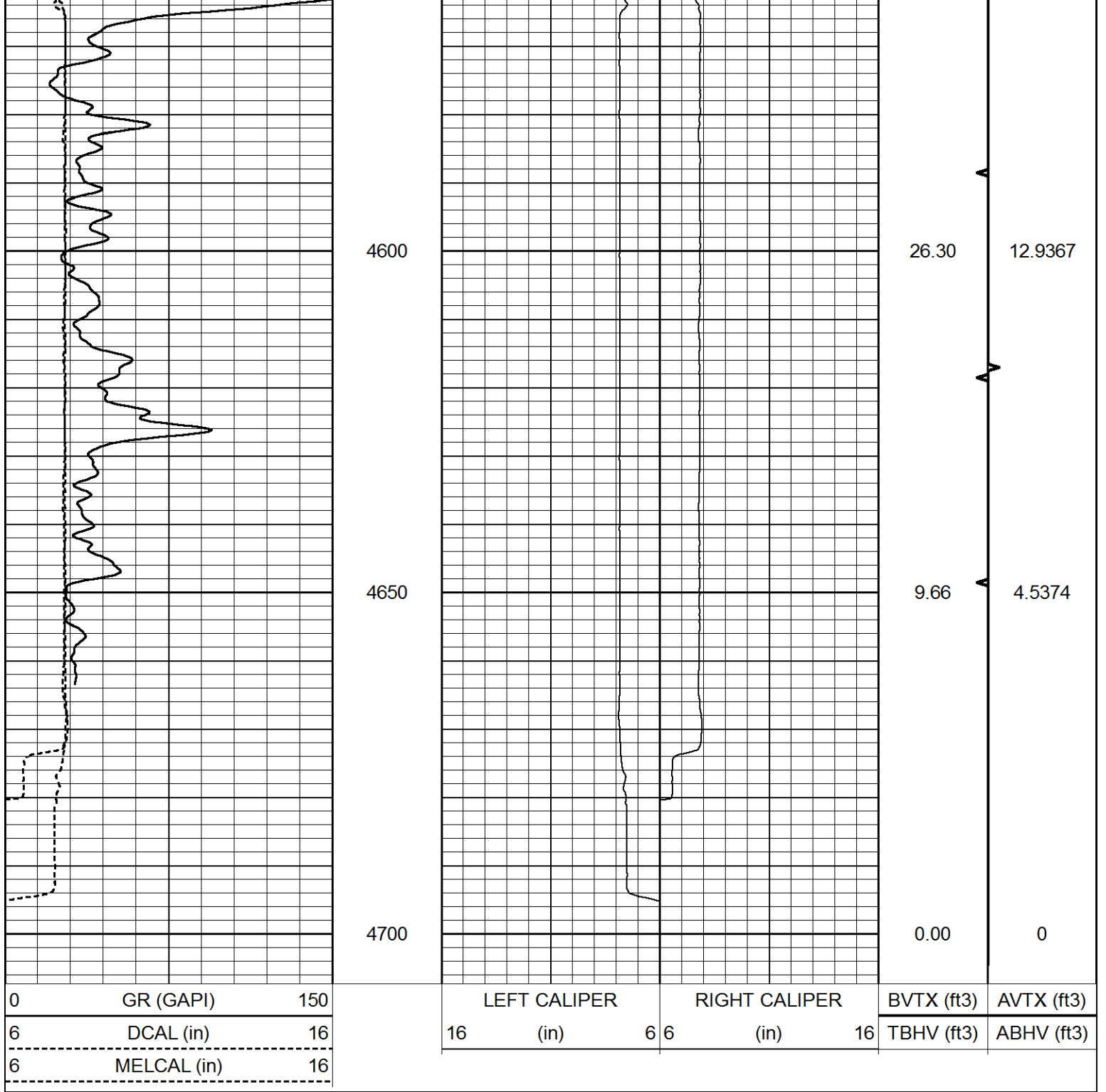
89.6253

81.3905

72.5982

64.2259





4600

26.30

12.9367

4650

9.66

4.5374

4700

0.00

0